

- 1 Front-A

2 Front Facing-A

3 Placket-A

4 Back-A,B

5 Side Back-A

6 Collar-A, B

7 Sleeve-A

8 Cuff-A

9 Front-B

10 Front Facing-B

11 Lower Front Facing-B

12 Placket-B

13 Side Back-B

14 Pocket-B

15 Armhole Facing-B
- 1 Devant - A

2 Parementure devant - A

3 Patte de fermeture - A

4 Dos - A, B

5 Côté dos - A

6 Col - A, B

7 Manche - A

8 Poignet - A

9 Devant - B

10 Parementure devant - B

11 Parementure devant inférieur - B

12 Patte de fermeture - B

13 Côté dos - B

14 Poche - B

15 Parementure d'emmanchure - B

BODY MEASUREMENTS / MESURES DU CORPS

MISSES/JEUNE FEMME										
Sizes/Tailles	8	10	12	14	16	18	20	22	24	26
Bust (ins)	31½	32½	34	36	38	40	42	44	46	48
Waist	24	25	26½	28	30	32	34	37	39	41
Hip	33½	34½	36	38	40	42	44	46	48	50
Bk. Wst Lgth.	15¾	16	16¼	16½	16¾	17	17¼	17½	17¾	18
T. poitrine (cm)	80	83	87	92	97	102	107	112	117	122
T. taille	61	64	67	71	76	81	87	94	97	104
T. hanches	85	88	92	97	102	107	112	117	122	127
Nuque à taille	40	40.5	41.5	42	42.5	43	44	44	45	46

FABRIC CUTTING LAYOUTS

⊕ Indicates Bustline, Waistline, Hipline and/or Biceps. Measurements refer to circumference of Finished Garment (Body Measurement + Wearing Ease + Design Ease). Adjust Pattern if necessary.

Lines shown are CUTTING LINES, however, 5/8" (1.5cm) SEAM ALLOWANCES ARE INCLUDED, unless otherwise indicated. See SEWING INFORMATION for seam allowance.

Find layout(s) by Garment/View, Fabric Width and Size. Layouts show approximate position of pattern pieces; position may vary slightly according to your pattern size.

All layouts are for with or without nap unless specified. For fabrics with nap, pile, shading or one-way design, use WITH NAP layout.

RIGHT SIDE OF PATTERN	WRONG SIDE OF PATTERN	RIGHT SIDE OF FABRIC	WRONG SIDE OF FABRIC
-----------------------	-----------------------	----------------------	----------------------

S/T = SIZE(S)/TAILLE(S)
* = WITH NAP/AVEC SENS
S/L = SELVAGE(S)/LISIERE(S)
AS/TT = ALL SIZE(S)/TOUTES TAILLE(S)
** = WITHOUT NAP/SANS SENS
F/P = FOLD/PLIURE
CF/PT = CROSSWISE FOLD/PLIURE TRAME

Position fabric as indicated on layout. If layout shows...

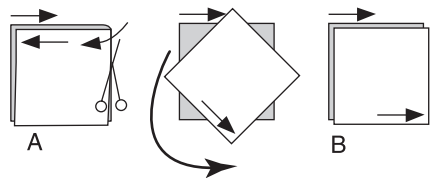
GRAINLINE—Place on straight grain of fabric, keeping line parallel to selvage or fold. ON “with nap” layout arrows should point in the same directions. (On Fur Pile fabrics, arrows point in direction of pile.)

SINGLE THICKNESS—Place fabric right side up. (For Fur Pile fabrics, place pile side down.)

DOUBLE THICKNESS

WITH FOLD—Fold fabric right sides together.

* **WITHOUT FOLD**—With right sides together, fold fabric **CROSSWISE**. Cut fold from selvage to selvage (A). Keeping right sides together, turn upper layer completely around so nap runs in the same direction as lower layer.



FOLD—Place edge indicated exactly along fold of fabric. NEVER cut on this line.

When pattern piece is shown like this...

• Cut other pieces first, allowing enough fabric to cut this piece (A). Fold fabric and cut piece on fold, as shown (B).

★ Cut piece only once. Cut other pieces first, allowing enough fabric to cut this piece. Open fabric; cut piece on single layer.

Cut out all pieces along cutting line indicated for desired size using long, even scissor strokes, cutting notches outward.

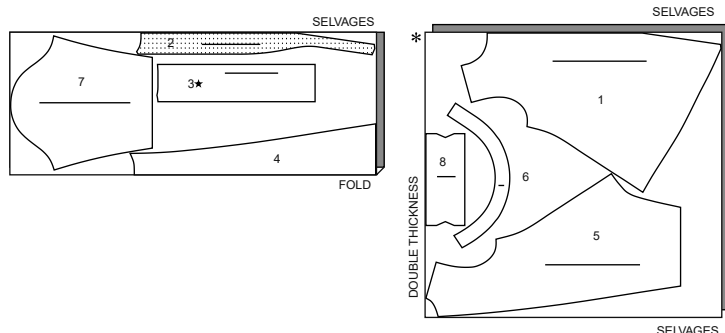
Transfer all markings and lines of construction before removing pattern tissue. (Fur Pile fabrics, transfer markings to wrong side.)

NOTE: Broken-line boxes (a! b! c!) in layouts represent pieces cut by measurements provided.

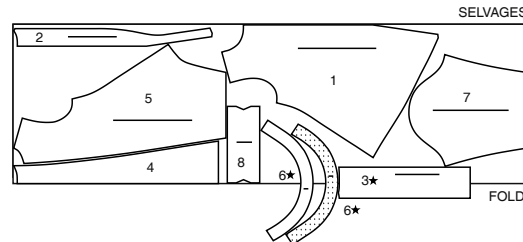
TOP A / HAUT A

PIECES: 1 2 3 4 5 6 7 8

45" (115 cm)
WITH NAP/ AVEC SENS
AS/TT



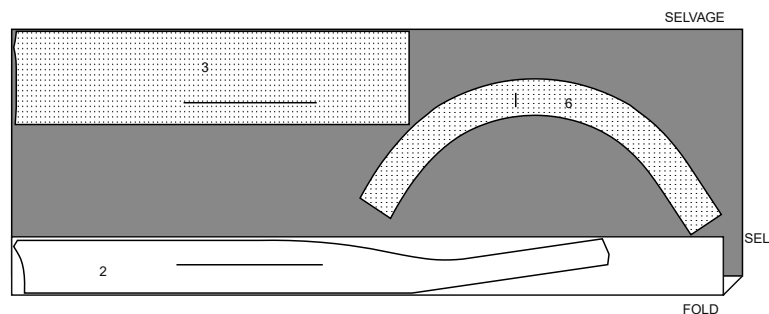
60" (150 cm)
WITH NAP
AVEC SENS
AS/TT



INTERFACING A / ENTOILAGE A

PIECES: 2 3 6

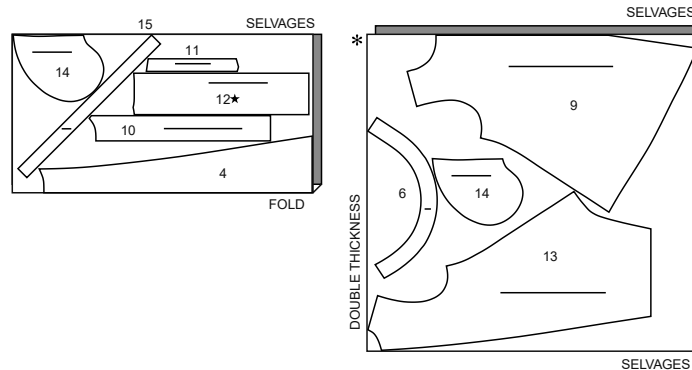
20" (51cm)
AS/TT



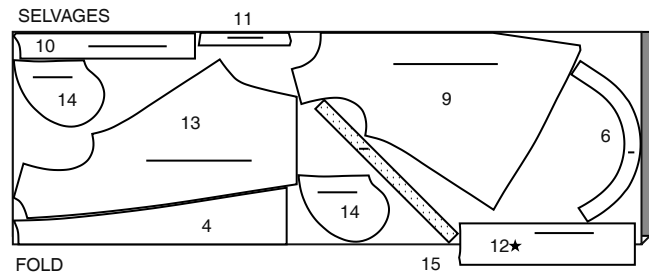
TOP B / HAUT B

PIECES: 4 6 9 10 11 12 13 14 15

45" (115 cm)
WITH NAP / AVEC SENS
AS/TT



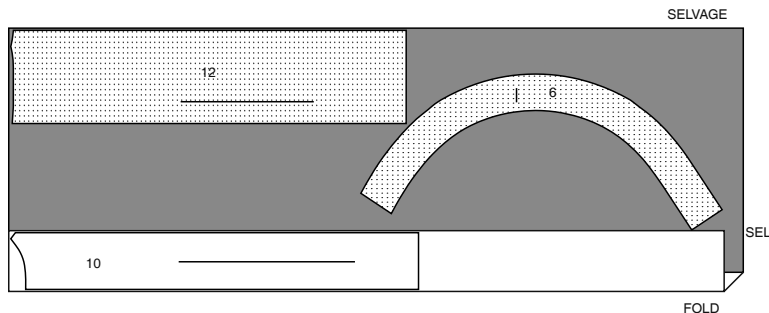
60" (150 cm)
WITH NAP
AVEC SENS
AS/TT



INTERFACING B / ENTOILAGE B

PIECES: 6 10 12

20" (51cm)
AS/TT



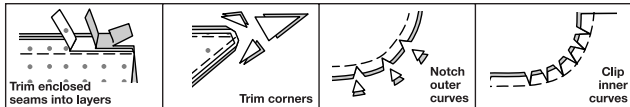
SEWING INFORMATION

5/8" (1.5cm) SEAM ALLOWANCES ARE INCLUDED,
(unless otherwise indicated)

ILLUSTRATION SHADING KEY

Right Side	Wrong Side	Interfacing	Lining	Underlining
------------	------------	-------------	--------	-------------

Press as you sew. Press seams flat, then press open, unless otherwise instructed. Clip seam allowances, where necessary, so they lay flat.



GLOSSARY

Sewing methods in **BOLD TYPE** have Sewing Tutorial Video available. Scan **QR CODE** to watch videos:

EASE – see **Gathering**: “sewing two row gathers” video.

EDGESTITCH – see **Machine Stitches**: “how to sew an edgestitch” video.

FINISH – see **Seams**: “how to finish seam allowances” video.

SET IN SLEEVE – see **Armholes/Sleeves**: “sewing a set in sleeve” video.

SLIPSTITCH – see **Hand Stitching**: “how to slip stitch” video.

STAYSTITCH – see **Machine Stitches**: “how to do stay stitching” video.

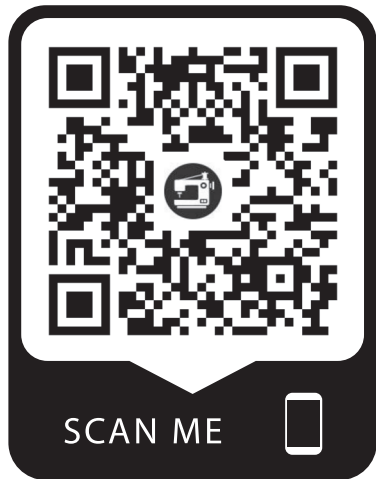
STITCH IN THE DITCH – see **Machine Stitches**: “how to stitch in the ditch” video.

TOPSTITCH – see **Machine Stitches**: “how to topstitch” video.

TRIM SEAM – see **Seams**: “how to trim, clip and layer seams” video.

UNDERSTITCH – see **Machine Stitches**: “how to understitch” video.

SEWING TUTORIALS



Build your skills viewing short, easy-to-follow videos at simplicity.com/sewingtutorials

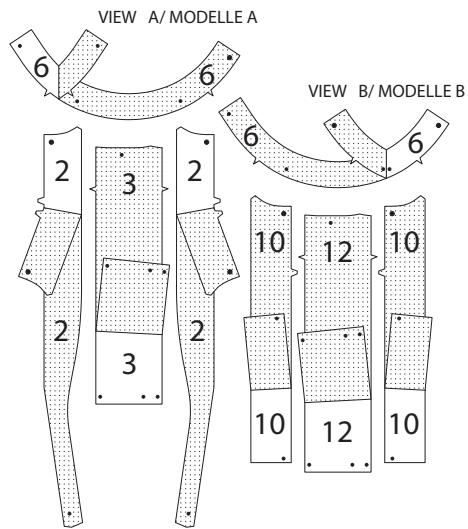
PATTERN PIECES WILL BE IDENTIFIED BY NUMBERS THE FIRST TIME THEY ARE USED.

STITCH 5/8" (1.5CM) SEAMS WITH RIGHT SIDES TOGETHER UNLESS OTHERWISE STATED.

TUNIC A, B

INTERFACING

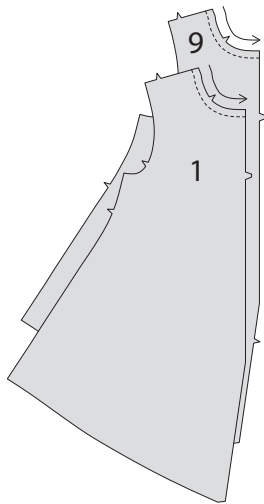
1. Pin interfacing to **WRONG** side of **FRONT FACING** (2), **PLACKET** (3), and **COLLAR** (6) for **View A**, or **FRONT FACING** (10), **COLLAR** (6), and **PLACKET** (12) for **View B**. Fuse interfacing in place following manufacturer's directions.



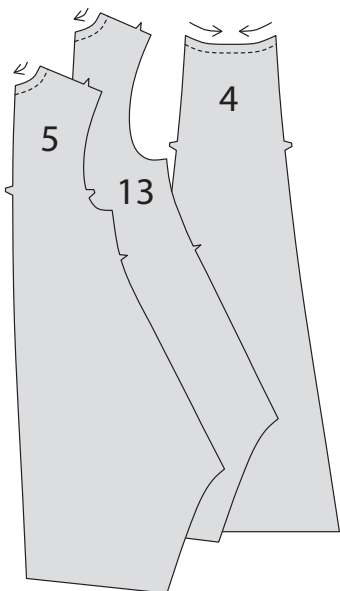
FRONT

NOTE: **View A** will be illustrated unless otherwise noted.

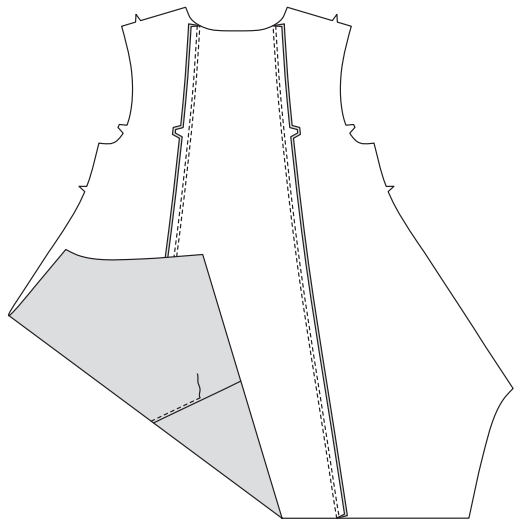
2. STAYSTITCH neck edge of **FRONT** (1) for **View A**, or **FRONT** (9) for **View B**. To staystitch, stitch 1/2" (1.3cm) from cut edge in direction of arrows. This stitching stays in permanently to prevent stretching on curved edges. (Shown only in the first illustration.)



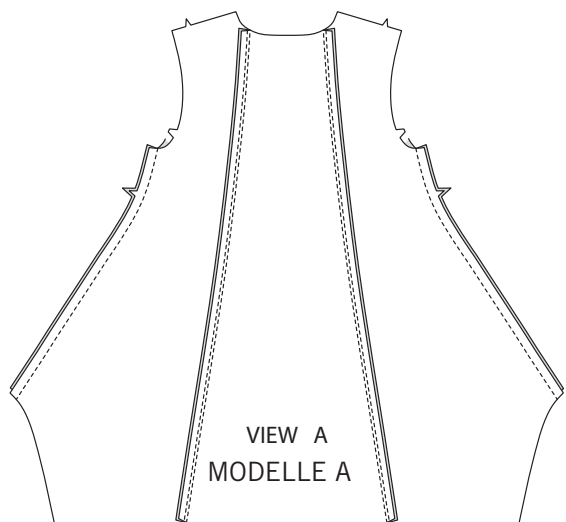
3. STAYSTITCH neck edge of **BACK** (4) and **SIDE BACK** (5) for **View A**, or **BACK** (4) and **SIDE BACK** (13) for **View B**.



4. With **RIGHT** sides together and raw edges even, pin back to side back at side back edges, matching notches. Stitch. Press seam toward side back. On **OUTSIDE**, **EDGESTITCH** side back close to seam.

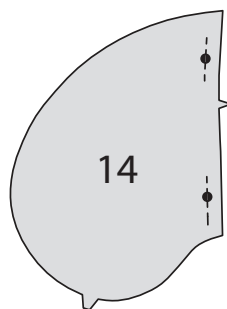


5. FOR VIEW A – Pin front to back at side edges, matching notches. Stitch. Press seams toward back.

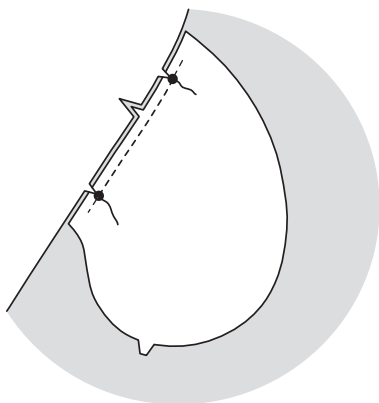


POCKETS B

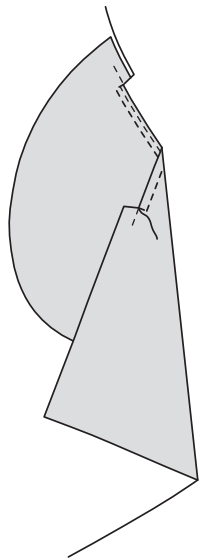
6. Use two opposing **POCKET** (14) sections for facings. To reinforce side edge of **POCKET** (14) at large dots, stitch along seam line for about 1" (2.5cm) each side of large dots, stitching through dots, as shown.



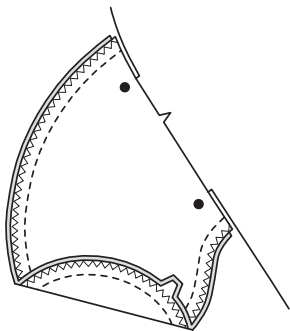
7. With **RIGHT** sides together, pin facing to side edge of front, matching notches, having raw edges even. Stitch between large dots, backstitching to reinforce. Clip seam allowance to stitching at dots.



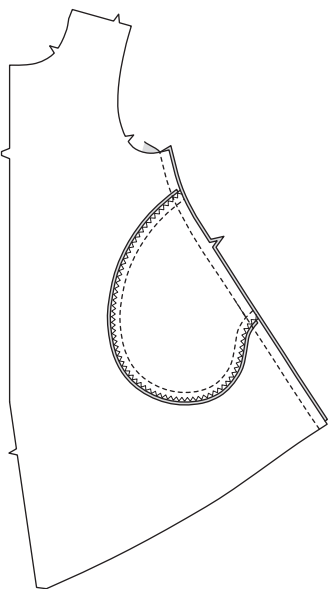
8. UNDERSTITCH the front facing. Turn facing; press. On **OUTSIDE**, **TOPSTITCH** front 1/4" (6mm) from finished edge, squaring stitching at ends.



9. With **RIGHT** sides together, pin remaining pocket to pocket facing, matching large dots and notches. Stitch edges of pocket between side edges. **FINISH** outer edge of pocket.

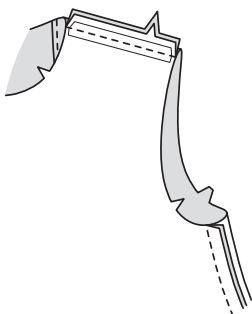


10. Pin front to back at side edges, matching notches. Stitch, keeping pocket opening free. Press seams toward back.

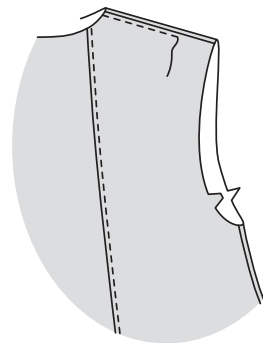


CONTINUE AS FOLLOWS FOR BOTH VIEWS

11. To prevent shoulder seams from stretching, pin center of hem tape, clear elastic or twill tape along seam line on front shoulder edges, then stitch front to back at shoulder edges. Press seam toward back.

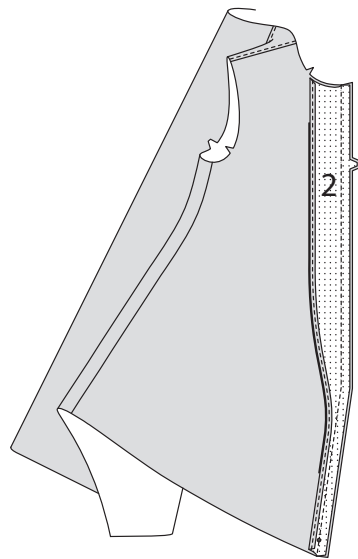


12. On **OUTSIDE**, **EDGESTITCH** back close to shoulder seamline.

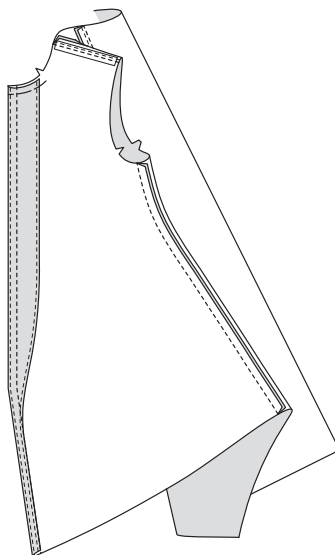


FRONT PLACKET AND FACING A

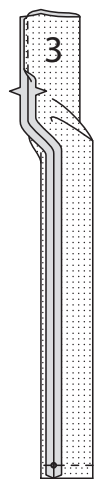
13. Press under 3/8" (1cm) seam allowance on inner edge of **FRONT FACING** (2). **EDGESTITCH** close to inner pressed edge. With **RIGHT** sides together, pin facing to front edge of front, matching small dots. Stitch notched edge.



14. UNDERSTITCH the facing. Turn facing to **INSIDE**, press. Baste raw edges together. Stitch 5/8" (1.5cm) from finished edge.



15. Fold **PLACKET** (3) in half with **RIGHT** sides together, matching notches. Stitch notched edge in a 3/8" (1cm) seam. Press seam open. Fold placket along foldlines, bringing small dots together. Stitch across lower edge. **TRIM SEAM.**



16. Turn placket; press. Baste raw edges together. Make buttonholes at markings.

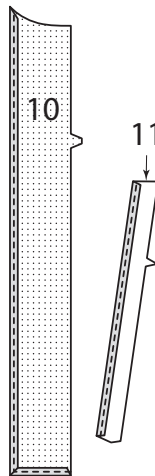


17. On **OUTSIDE**, pin placket to **RIGHT** front, matching small dots and stitching line. Stitch from neck edge to small dot along stitching line.



FRONT PLACKET AND FACING B

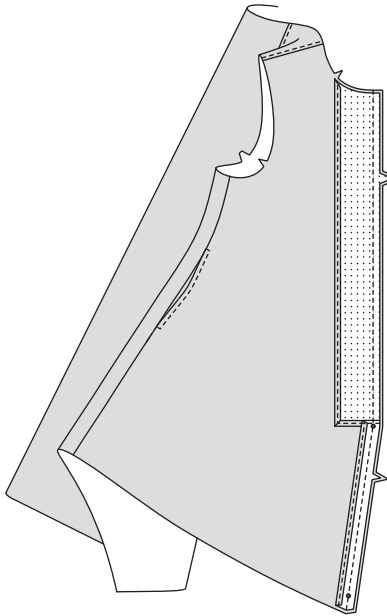
18. Press under 3/8" (1cm) seam allowance on inner and lower edge of **FRONT FACING** (10), folding in fullness at lower corner. **EDGESTITCH** inner long edge. Press under 3/8" (1cm) on inner edge of **LOWER FRONT FACING** (11). **EDGESTITCH** long inner edge.



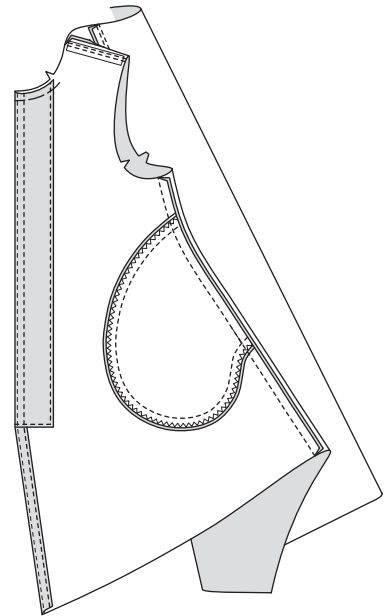
19. Pin **WRONG** side of front facing to **RIGHT** side of lower front facing, matching small dots and seamlines. Baste along seamline. **EDGESTITCH** lower pressed edge of front facing through all thicknesses from inner edge to seamline, catching in lower front facing.



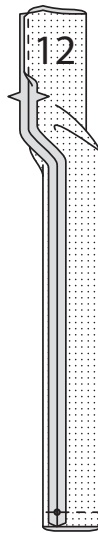
20. With RIGHT sides together, pin facing to front edge, matching small dots. Stitch.



21. UNDERSTITCH the facing. Turn facing to INSIDE; press. Baste neck edges together. Stitch 5/8" (1.5cm) from finished edge through all thicknesses, pivoting at small dot.



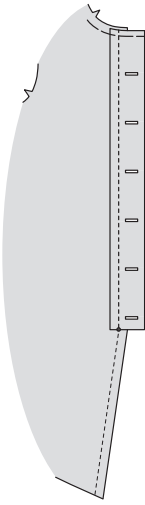
22. Fold PLACKET (12) in half with RIGHT sides together, matching notches. Stitch notched edge in a 3/8" (1cm) seam. Press seam open. Fold placket along foldlines, bringing small dots together. Stitch across lower edge. TRIM SEAM.



23. Turn placket; press. Baste raw edges together. Make buttonholes at markings.

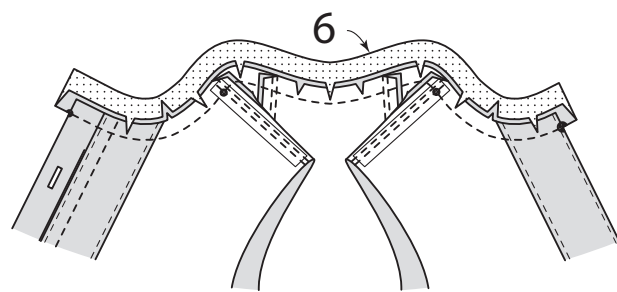


24. On OUTSIDE, pin placket to RIGHT front, matching small dots and stitching line. Stitch along stitching line from neck edge to small dot.

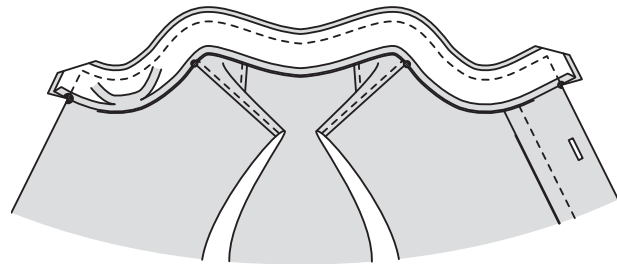


CONTINUE AS FOLLOWS FOR BOTH VIEWS

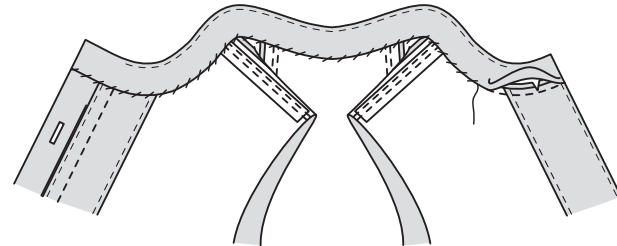
25. Clip top neck edge to staystitching. With RIGHT sides together, pin COLLAR (6) to neck edge, matching centers back, small dots, and placing remaining small dots at shoulder seams. (End of collar extends 5/8" (1.5cm) beyond front edges.) Stitch. TRIM SEAM. Press collar out, pressing seam toward collar.



26. Press under 5/8" (1.5cm) on notched edge of collar facing. Trim to 1/4" (6mm). With RIGHT sides together, pin collar facing to collar, matching centers back, having raw edges even. Stitch with neck edge in 3/8" (1cm) seam. TRIM SEAM.



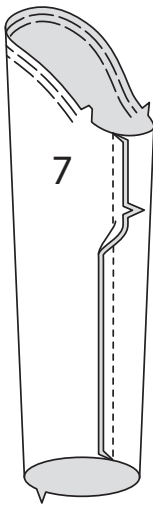
27. UNDERSTITCH the collar. Turn collar facing to INSIDE; press. Pin pressed edge of facing over seam. SLIPSTITCH in place.



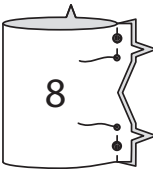
SLEEVE A

28. EASE top of SLEEVE (7) between notches. To ease, stitch along seam line and 1/4" (6mm) INSIDE seam line, using a long machine-stitch.

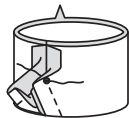
Stitch underarm seam. Press seam toward back.



29. Fold CUFF (8) in half crosswise with RIGHT sides together, bringing large and small dots together. Stitch side edges from upper and lower edges to small dots, back-stitching at small dots to reinforce the seam. Press seams open.

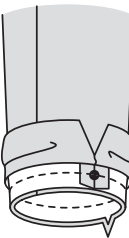


30. Fold cuff along fold line with RIGHT sides together. Stitch along seam lines from lower edge to small dots, breaking and reinforcing stitches at small dots. TRIM SEAM.

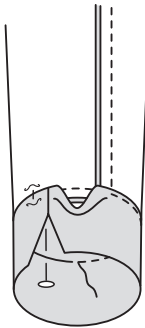


31. Turn cuff facing to INSIDE; press, pressing out corners. Turn under 1/2" (1.3cm) on long unmarked edge of cuff facing. Trim to 1/4" (6mm).

With RIGHT sides together and raw edges even, pin cuff to lower edge of sleeve, matching large dots and notches. Stitch, being careful not to catch in pressed edge of facing. TRIM SEAM.

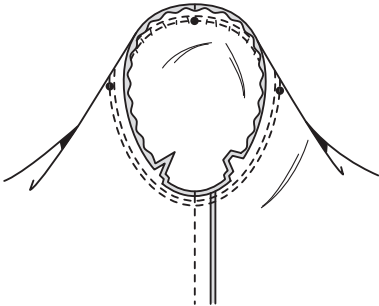


32. Press cuff out, pressing seam toward cuff. On INSIDE, pin pressed edge of cuff over seam, placing pins on OUTSIDE. On OUTSIDE, STITCH IN THE DITCH of the seam, catching in pressed edge of facing on the INSIDE.



33. To SET IN SLEEVE, turn sleeve RIGHT side out. Hold top WRONG side out with armhole toward you. With RIGHT sides together, pin sleeve to armhole edge with center small dot at shoulder seam, matching underarm seams, notches and remaining small dots. Pull up ease stitches to fit.

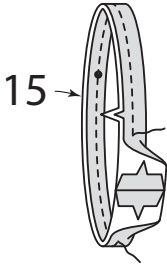
To distribute fullness evenly, slide fabric along bobbin threads until there are no puckers or tucks on the seam line. Baste. Stitch. Stitch again 1/8" (3mm) from first stitching. Trim seam below notches close to stitching. Press only the seam allowance, shrinking out fullness.



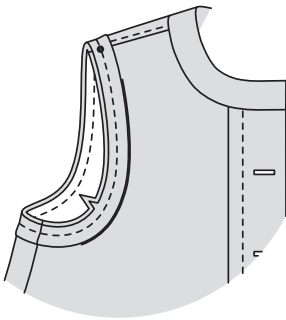
ARMHOLE B

34. With RIGHT sides together, stitch ends of ARMHOLE FACING (15).

Fold facing in half lengthwise, with WRONG sides together, matching small dots. Baste in a 3/8" (1cm), press.



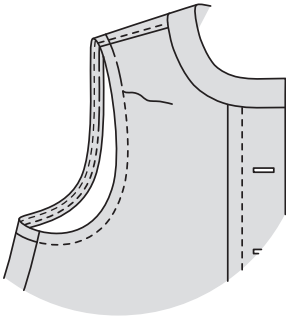
35. On OUTSIDE, pin facing to armhole edge, placing small dot at shoulder seam and matching remaining seams and notches. Stitch. TRIM SEAM.



36. UNDERSTITCH the facing. Turn facing to INSIDE; press.

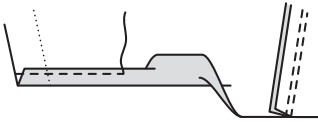
Baste close to inner edge of facing.

On OUTSIDE, TOPSTITCH as basted.

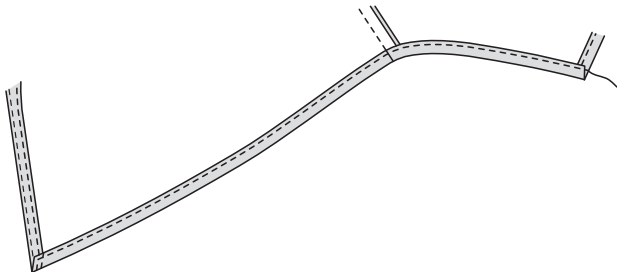


FINISHING BOTH VIEWS

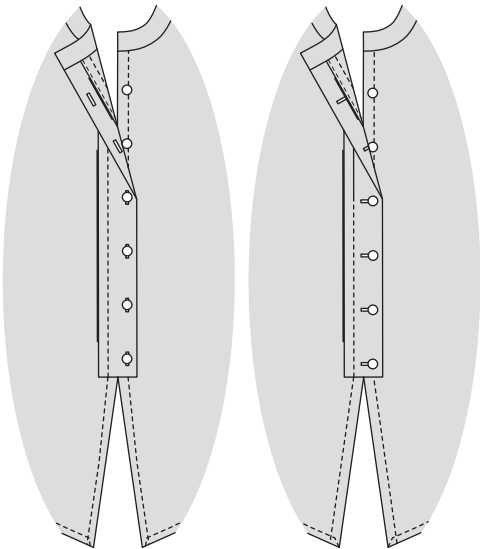
37. Press up 1-1/8" (2.8cm) on lower edge of back. Turn under pressed edge 1/2" (1.3cm). EDGESTITCH close to inner pressed edge.



38. Press up 1-1/8" (2.8cm) on lower edge of front. Turn under pressed edge 1/2" (1.3cm), folding in fullness at corners. EDGESTITCH close to inner pressed edge and corners.



39. Lap RIGHT front over LEFT, matching centers. Sew buttons under buttonholes.



VIEW A
MODELLE A

VIEW B
MODELLE A B

21. SOUS-PIQUER la parementure. Retourner la parementure vers l'INTÉRIEUR ; presser. Bâtir ensemble les bords de l'encolure. Piquer à 1.5 cm du bord fini à travers toute l'épaisseur, en pivotant au petit cercle.

22. Plier la PATTE DE FERMETURE (12) en deux ENDROIT CONTRE ENDROIT, en faisant coïncider les encoches. Piquer le bord à encoche en couture de 1 cm. Ouvrir la couture au fer. Plier la patte sur les lignes de pliure, en amenant les petits cercles l'un sur l'autre. Piquer à travers le bord inférieur. **COUPER LA COUTURE.**

23. Retourner la patte de fermeture ; presser. Bâtir ensemble les bords non finis. Faire les boutonsnières sur les marques.

24. Sur l'ENDROIT, épinglez la patte sur le devant DROIT, en faisant coïncider les petits cercles et la ligne de piqure. Piquer sur la ligne de piqure depuis le bord de l'encolure jusqu'au petit cercle.

CONTINUER COMME SUIVANT POUR LES DEUX MODÈLES

25. Cranter le bord de l'encolure du haut vers la piqure de soutien. ENDROIT CONTRE ENDROIT, épinglez le COL (6) sur le bord de l'encolure, en faisant coïncider les milieux du dos, les petits cercles et en plaçant les petits cercles restants sur les coutures d'épaule. (L'extrémité du col s'étend 1.5 cm au-delà des bords du devant). Piquer. **COUPER LA COUTURE.** Presser le col vers l'extérieur, en pressant la couture vers le col.

26. Rentrer au fer 1.5 cm sur le bord à encoche de la parementure de col. Recouper à 6 mm. ENDROIT CONTRE ENDROIT, épinglez la parementure de col sur le col, en faisant coïncider les milieux du dos, ayant les bords non finis au même niveau. Piquer sur le bord de l'encolure en couture de 1 cm. **COUPER LA COUTURE.**

27. SOUS-PIQUER le col. Retourner la parementure de col vers l'INTÉRIEUR ; presser. Épinglez le bord pressé de la parementure par-dessus la couture. Coudre en place aux **POINTS COULÉS.**

MANCHE A

28. SOUTENIR le haut de la MANCHE (7) entre les encoches. Pour distribuer l'ampleur, piquer sur la ligne de couture et 6 mm DANS la ligne de couture, en utilisant un long point à la machine. Piquer la couture de dessous de bras. Presser la couture vers le dos.

29. Plier le POIGNET (8) en deux transversalement ENDROIT CONTRE ENDROIT, en amenant les grands et les petits cercles l'un sur l'autre. Piquer les bords du côté depuis les bords supérieur et inférieur jusqu'aux petits cercles, en piquant au point arrière sur les petits cercles pour renforcer la couture. Ouvrez les coutures au fer.

30. Plier le poignet sur la ligne de pliure, ENDROIT CONTRE ENDROIT. Piquer sur les lignes de couture depuis le bord inférieur jusqu'aux petits cercles, en arrêtant et en renforçant les points aux petits cercles. **COUPER LA COUTURE.**

31. Retourner la parementure de poignet vers l'INTÉRIEUR ; presser, en ouvrant au fer les coins. Rentrer 1.3 cm sur le long bord sans marque de la parementure de poignet. Recouper à 6 mm. ENDROIT CONTRE ENDROIT et ayant les bords non finis au même niveau, épinglez le poignet sur le bord inférieur de la manche, en faisant coïncider les grands cercles et les encoches. Piquer, en veillant à ne pas saisir le bord pressé de la parementure. **COUPER LA COUTURE.**

32. Presser le poignet vers l'extérieur, en pressant la couture vers le poignet. Sur l'ENVERS, épinglez le bord pressé du poignet par-dessus la couture, en plaçant les épingles sur l'ENDROIT. Sur l'ENDROIT, **PIQUER DANS LE SILLON** de la couture, en saisissant le bord pressé de la parementure sur l'ENVERS.

33. Pour **MONTER LA MANCHE**, retourner la manche à l'ENDROIT. Tenir le haut à l'ENVERS avec l'emmanchure vers vous. ENDROIT CONTRE ENDROIT, épinglez la manche sur le bord de l'emmanchure avec le petit cercle du milieu sur la couture d'épaule, en faisant coïncider les coutures de dessous de bras, les encoches et les petits cercles restants. Tirer sur le faufil pour ajuster. Pour distribuer l'ampleur également, glisser le tissu le long des fils canette jusqu'à ce qu'il n'y ait ni fronces ni faux plis sur la ligne de couture. Bâtir. Piquer. Piquer de nouveau à 3 mm de la première piqure. Recouper la couture au-dessous des encoches près de la piqure. Ne presser que la valeur de couture, en rétrécissant l'ampleur.

EMMANCHURE B

34. ENDROIT CONTRE ENDROIT, piquer les extrémités de la PAREMENTURE D'EMMANCHURE (15). Plier la parementure en deux dans le sens de la longueur, ENVERS CONTRE ENVERS, en faisant coïncider les petits cercles. Bâtir en couture de 1 cm, presser.

35. Sur l'ENDROIT, épinglez la parementure sur le bord de l'emmanchure, en plaçant le petit cercle sur la couture d'épaule et en faisant coïncider les coutures restantes et les encoches. Piquer. **COUPER LA COUTURE.**

36. SOUS-PIQUER la parementure. Retourner la parementure vers l'INTÉRIEUR ; presser. Bâtir près du bord intérieur de la parementure. Sur l'ENDROIT, **SURPIQUER** le long du faufil.

FINITION DES DEUX MODÈLES

37. Relever au fer 2.8 cm sur le bord inférieur du dos. Rentrer le bord pressé à 1.3 cm. **PIQUER LE BORD** près du bord intérieur pressé.

38. Relever au fer 2.8 cm sur le bord inférieur du devant. Rentrer le bord pressé à 1.3 cm, en pliant l'ampleur aux coins. **PIQUER LE BORD** près du bord intérieur pressé et des coins.

39. Superposer le devant DROIT au GAUCHE, en faisant coïncider les milieux. Coudre les boutons sous les boutonsnières.