



PDF PATTERNS

B6850

>> MISSES' DRESSES



02

PIECES AND NOTIONS

03

CHARTS

04

CUTTING LAYOUTS

07

PATTERN MARKINGS

08

SEWING INSTRUCTIONS

THE *Palmer/Pletsch*
TISSUE FITTING METHOD
TISSUE MÉTHODE D'ADJUSTEMENT

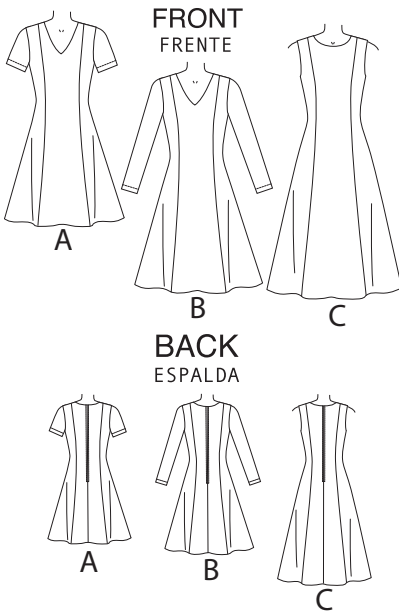


Patti Palmer

Butterick®

SKILL LEVEL: EASY

Find the Perfect Fit!



THINGS YOU NEED:

> 22" Invisible Zipper, Hook and Eye.

SUGGESTED FABRICS:

> Crepes, Cotton Blends, Gabardine, Sateen.

Your printed tile pieces should be assembled before you move on to this step!

PIECES (11)

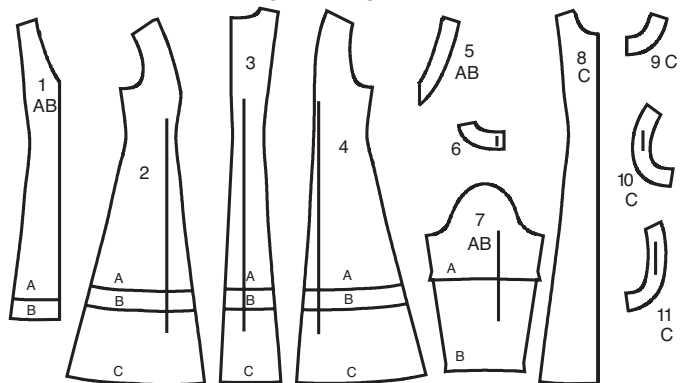
DRESS A, B, C

FACING C

- 1 FRONT A,B
- 2 SIDE FRONT
- 3 BACK
- 4 SIDE BACK
- 5 FRONT NECK FACING A,B
- 6 BACK NECK FACING
- 7 SLEEVE A,B
- 8 FRONT C
- 9 FRONT NECK FACING C
- 10 FRONT ARMHOLE FACING C
- 11 BACK ARMHOLE

11 PATTERN PIECES

11 PIEZAS DE PATRON



CHARTS

YARDAGE CHARTS

SIZES	6	8	10	12	14	16	18	20	22	
VIEW A										
45"/**	2 ⁵ / ₈	2 ⁵ / ₈	2 ⁵ / ₈	2 ⁵ / ₈	2 ³ / ₄	2 ³ / ₄	2 ³ / ₄	2 ⁷ / ₈	3 ¹ / ₈	yds.
115cm*/**	2.4	2.4	2.4	2.4	2.6	2.6	2.6	2.7	2.9	m.
60"/**	1 ³ / ₄	1 ³ / ₄	1 ³ / ₄	1 ⁷ / ₈	2 ¹ / ₄	2 ³ / ₈	2 ³ / ₈	2 ³ / ₈	2 ³ / ₈	yds.
150cm*/**	1.6	1.6	1.6	1.8	2.1	2.2	2.2	2.2	2.2	m.
VIEW B										
45"/**	3 ¹ / ₈	3 ¹ / ₈	3 ¹ / ₈	3 ¹ / ₄	3 ¹ / ₄	3 ¹ / ₂	3 ⁵ / ₈	3 ³ / ₄	3 ⁷ / ₈	yds.
115cm*/**	2.9	2.9	2.9	3.0	3.0	3.2	3.4	3.5	3.6	m.
60"/**	2	2 ¹ / ₄	2 ¹ / ₄	2 ¹ / ₂	2 ¹ / ₂	2 ¹ / ₂	2 ⁵ / ₈	2 ⁵ / ₈	2 ³ / ₄	yds.
150cm*/**	1.9	2.1	2.1	2.3	2.3	2.3	2.4	2.4	2.6	m.
FUSIBLE INTERFACING A,B										
18,20"	³ / ₈	³ / ₈	³ / ₈	³ / ₈	³ / ₈	³ / ₈	³ / ₈	³ / ₈	¹ / ₂	yds.
46,51cm	0.4	0.4	0.4	0.4	0.4	0.4	0.4	0.4	0.5	m.
VIEW C										
45"/**	4	4 ¹ / ₈	4 ¹ / ₈	4 ¹ / ₄	4 ³ / ₈	4 ⁵ / ₈	4 ⁵ / ₈	4 ⁵ / ₈	4 ³ / ₄	yds.
115cm*/**	3.7	3.8	3.8	3.9	4.0	4.3	4.3	4.3	4.4	m.
60"/**	3	3	3 ¹ / ₈	3 ¹ / ₈	3 ¹ / ₈	3 ¹ / ₈	3 ¹ / ₈	3 ¹ / ₈	3 ¹ / ₈	yds.
150cm*/**	2.8	2.8	2.9	2.9	2.9	2.9	2.9	2.9	2.9	m.
FUSIBLE INTERFACING C										
18,20"	³ / ₄	³ / ₄	³ / ₄	³ / ₄	³ / ₄	³ / ₄	³ / ₄	³ / ₄	³ / ₄	yds.
46,51cm	0.7	0.7	0.7	0.7	0.7	0.7	0.7	0.7	0.7	m.

FINISHED GARMENT MEASUREMENTS

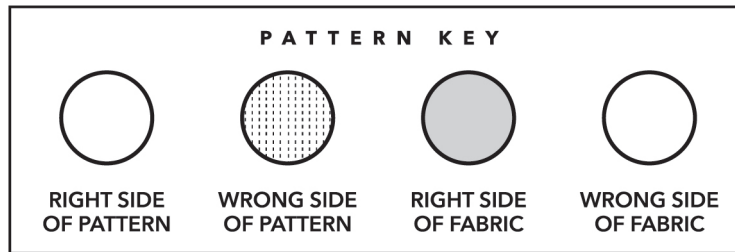
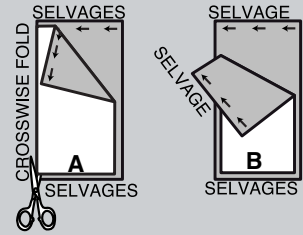
SIZES	6	8	10	12	14	16	18	20	22	
MEASUREMENT AT BUSTLINE										
A B C	33½	34½	35½	37	39	41	43	45	47	in.
	85	88	90	94	99	104	109	115	120	cm.
MEASUREMENT AT HIPLINE										
A B C	41	42	43	44½	46½	48½	50½	52½	54½	in.
	104	107	109	113	118	123	128	133	138	cm.
WIDTH, LOWER EDGE										
VIEW A	63	64	65	66½	68½	70½	72½	74½	76½	in.
	160	163	165	169	174	179	184	190	194	cm.
VIEW B	69	70	71	72½	74½	76½	78½	80½	82½	in.
	175	178	180	184	190	194	199	204	210	cm.
VIEW C	91½	92½	93½	95	97	99	101	103	105	in.
	232	235	237	241	246	251	257	262	267	cm.
BACK LENGTH FROM BASE OF NECK										
VIEW A	36½	36¾	37	37¼	37½	37¾	38	38¼	38½	in.
	93	94	94	95	95	96	97	97	98	cm.
VIEW B	39½	39¾	40	40¼	40½	40¾	41	41¼	41½	in.
	100	101	102	102	103	103	104	105	105	cm.
VIEW C	50½	50¾	51	51¼	51½	51¾	52	52¼	52½	in.
	128	129	130	130	131	131	132	133	133	cm.

BODY MEASUREMENTS

SIZES	6	8	10	12	14	16	18	20	22	
BUST	30½	31½	32½	34	36	38	40	42	44	in.
	77	80	83	87	92	97	102	107	112	cm
WAIST	23	24	25	26½	28	30	32	34	37	in.
	58	61	64	67	71	76	81	87	94	cm
HIP	32½	33½	34½	36	38	40	42	44	46	in.
	83	85	88	92	97	102	107	112	117	cm
BACK WAIST LENGTH	15½	15¾	16	16¼	16½	16¾	17	17¼	17½	in.
	40	40	40.5	41.5	42	42.5	43	44	44.5	cm

CUTTING AND MARKING

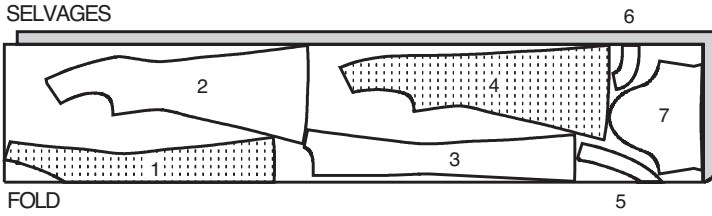
- > **SHRINK FABRIC** if not labeled pre-shrunk. Press.
- > **CIRCLE LAYOUT** for View, Size, Fabric Width.
- > Use **WITH NAP** layout for fabrics with one-way designs, nap, pile or surface shading. Because most knits have surface shading, a with nap layout is used.
- > For **DOUBLE THICKNESS (WITH FOLD)**, fold fabric with right sides together.
- > ***DOUBLE THICKNESS (WITHOUT FOLD)**, for fabrics with nap, fold fabric crosswise, right sides together. Mark as shown. Cut along crosswise fold of fabric (A). Turn upper layer 180° so arrows go in same direction and place over lower layer, right sides together (B).
- > For **SINGLE THICKNESS**, place fabric right side up. (For Fur Pile fabrics, place pile side down.)



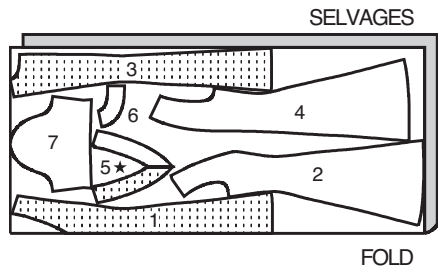
- > Before **CUTTING**, place all pieces on fabric according to layout. Pin.
(Layouts show approximate position of pattern pieces; position may vary according to your pattern size.)
 - > ★ Cut other pieces first, allowing enough fabric to cut this piece. Open fabric. Cut piece on single layer of fabric with piece face up on right side of fabric.
 - > Cut accurately, cutting notches outward.
 - > Before removing pattern, **TRANSFER MARKINGS** and lines of construction to **WRONG SIDE** of fabric, using Pin and Chalk Pencil method or Tracing Paper and Dressmaker Wheel. Markings needed on right side of fabric should be thread traced.
- NOTE:** Broken-line boxes (a! b! c!) in layouts represent pieces cut by measurements provided.
- > Prewash your fabric using a method that's suitable for the fabric type.
 - > Fold fabric with right sides together, matching **SELVAGES**.
 - > Pin your pattern pieces to the fabric as shown below and cut them out using a sharp pair of dressmaker's shears.

1 DRESS A

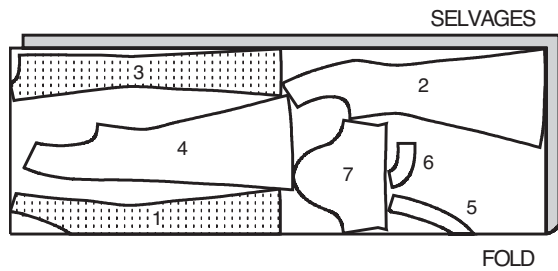
USE PIECES/USE PIEZAS: 1,2,3,4,5,6 & 7
 45" (115 CM)
 WITH OR WITHOUT NAP
 ALL SIZES



60" (150 CM)
 WITH OR WITHOUT NAP
 SIZES 6-8-10-12

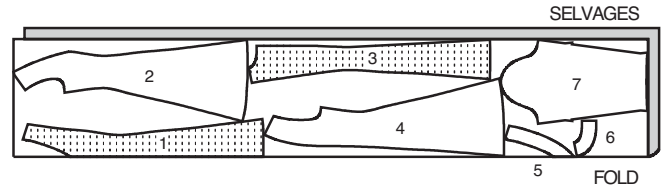


60" (150 CM)
 WITH OR WITHOUT NAP
 SIZES 14-16-18-20-22

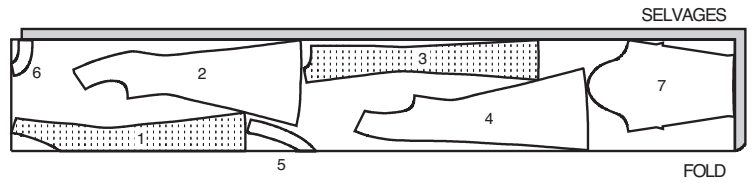


2 DRESS B

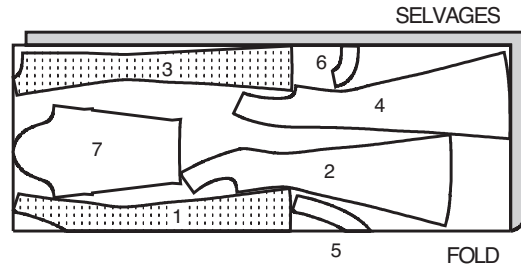
USE PIECES/USE PIEZAS: 1,2,3,4,5,6 & 7
 45" (115 CM)
 WITH OR WITHOUT NAP
 SIZES 6-8-10-12-14



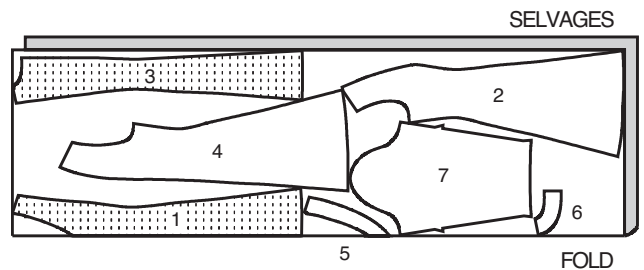
45" (115 CM)
 WITH OR WITHOUT NAP
 SIZES 16-18-20-22



60" (150 CM)
 WITH OR WITHOUT NAP
 SIZES 6-8-10



60" (150 CM)
 WITH OR WITHOUT NAP
 SIZES 12-14-16-18-20-22



3 FUSIBLE INTERFACING A,B

USE PIECES/USE PIEZAS: 5 & 6

18",20" (46,51 CM)

ALL SIZES

SELVAGE

6★



SELVAGE

5 FOLD

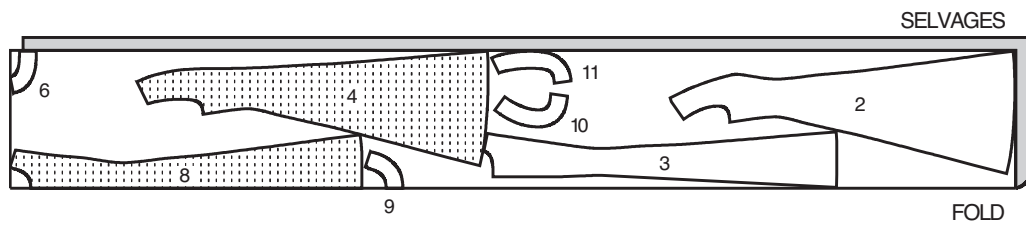
4 DRESS C

USE PIECES/USE PIEZAS: 2,3,4,6,8,9,10 & 11

45" (115 CM)

WITH OR WITHOUT NAP

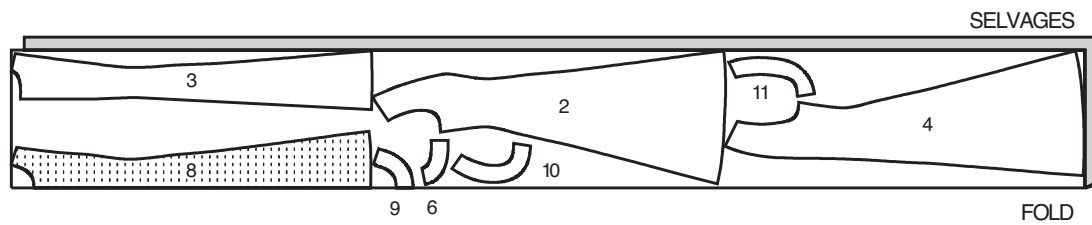
SIZES 6-8-10-12-14



45" (115 CM)

WITH OR WITHOUT NAP

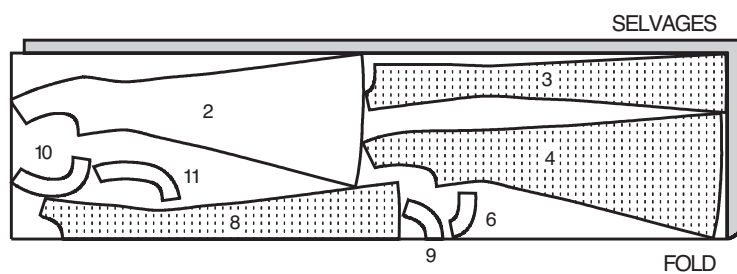
SIZES 16-18-20-22

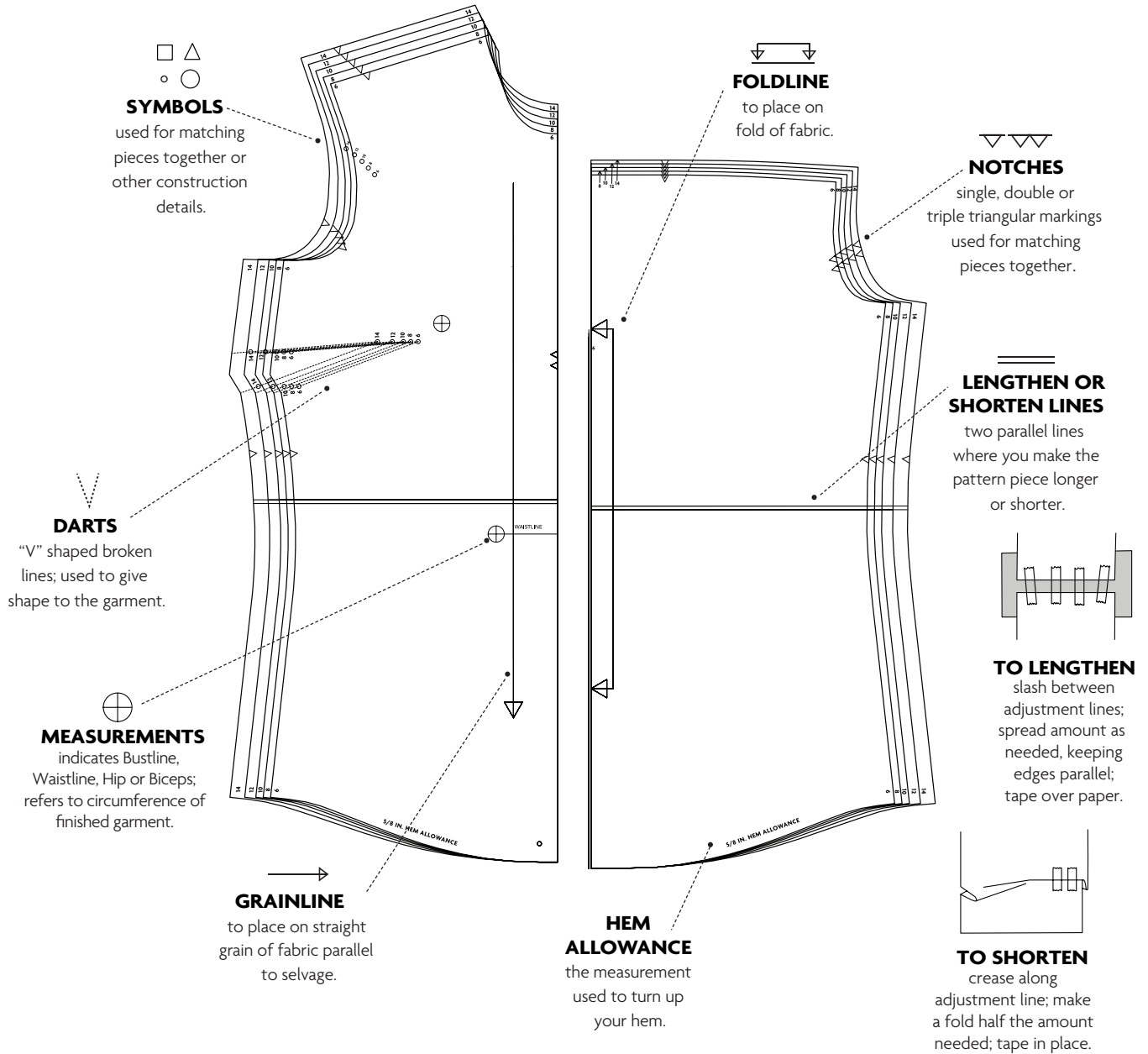


60" (150 CM)

WITH OR WITHOUT NAP

ALL SIZES/TODAS LAS





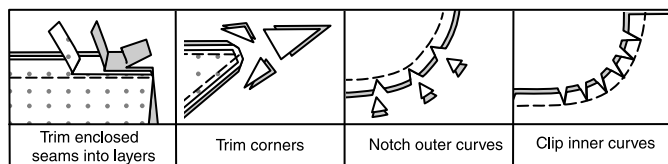
FABRIC KEY



PATTERN PIECES WILL BE IDENTIFIED BY NUMBERS THE FIRST TIME THEY ARE USED.

SEAM ALLOWANCES:

- > Use 5/8" (1.5 cm) seam allowances unless otherwise indicated.
- > Pin or baste seams, right side together, matching notches. Fit garment before stitching major seams.
- > Press seam allowances flat; then open unless otherwise stated. Clip where necessary so they lie flat.



The following terms appear in **BOLD TYPE** throughout your sewing instructions!

> EASESTITCH

Stitch along seamline, using long machine stitches. Pull thread ends when adjusting to fit.

NOTE: For sleeve caps, make a second row of long machine stitches 1/4" (6mm) away in seam allowance for more control.

> FINISH

Stitch 1/4" (6mm) from raw edge and finish with one of the following: (1) Pink OR (2) Overcast OR (3) Turn in along stitching and stitch close to fold OR (4) Overlock.

OPTIONAL FOR HEMS: Apply Seam Binding.

> STAYSTITCH

Stitch 1/8" (3mm) from seamline in seam allowance (usually 1/2" (13mm) from raw edge).

> TOPSTITCH

On outside, stitch 1/4" (6mm) from edge, seam or previous stitching, using presser foot as guide, or stitch where indicated in instructions.

> UNDERSTITCH

Open out facing or underside of garment; stitch to seam allowance close to seam.

LEARN TO FIT YOURSELF WITH THE PALMER/PLETSCH TISSUE-FITTING METHOD "SHOULDER PRINCESS DRESS"

After Marta Alto, Melissa Watson and I filmed online tissue-fitting classes for Craftsyl.com and nearly 3000 people signed up in the first month, we realized that we'd been keeping tissue-fitting a highly guarded secret. Well, not really, because we've been teaching hands-on fit workshops since the early 1990's, and also teaching teachers worldwide to teach tissue-fitting. But as instructors, we can only take 6-10 students at a time, miniscule compared to the numbers viewing the online classes. Once introduced to tissue-fitting, people are seeking out our teachers for more!

Our Butterick patterns have included tissue-fitting for years, but you may not have known it until you bought a pattern and opened up the guide. Well, no longer!! We will

be touting tissue-fitting right on the envelope and in the catalog.

In this pattern, you will learn to fit a design with princess lines. This pattern includes our latest princess bust alteration instructions and alteration lines on the tissue. Follow the steps in the guidesheet carefully. Shoulder princess is easier to fit than armhole princess for those who are quite full busted. If you are full busted, you might want to watch this DVD available at www.palmerpletsch.com. Also look for our very complete books on fit and pants fit. They are great resources.

PRO TIP: This guide was so packed full of fit information that we didn't have room for lining instructions. If your dress would benefit from lining, cut lining pieces from fronts, backs and sleeves. Sew as you did the dress and attach linings to armhole, neckline and to sleeve cap, wrong sides together, before finishing armhole and neckline. This will make the dress feel luxurious if it is cut out of a wool fabric.

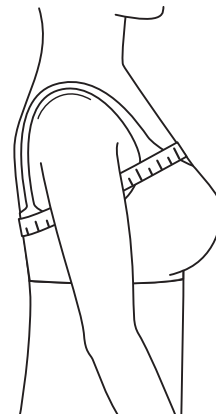
Happy Fitting!

BUY THE RIGHT SIZE

We have built in a bit more ease than in the sloper from which Butterick designs. This dress has 3" (7.5cm) ease in the bust, 3-3/4" (9.5cm) in the waist and 8-1/2" (21.5cm) in the hips. However, ease preferences are personal.

This pattern includes sizes 6-22 with three sizes grouped on a sheet. Patterns are made for a B bra cup size. To eliminate the cup size variable, we will measure only what James McCall taught in 1873. It is what we now call the high bust. It needs to be a skin measurement without ease.

Hold the tape measure snugly, but not too tight. FYI, In 1873 James McCall called this the bust measurement, but used the term breast for men which was measured over the apex.



**MEASUREMENT CHART
TABLA DE MEDIDAS**

SIZE Talla	6	8	10	12	14	16	18	20	22
BUST	30.5"	31.5"	32.5"	34"	36"	38"	40"	42"	44"
Busto	78cm	80cm	83cm	87cm	92cm	97cm	102cm	107cm	112cm

Compare this measurement to the bust line on the measurement chart. If you are right on a size, use that size. If you are between sizes, go to the smaller size. If you know you have a broad back, use the smaller size and do a broad back alteration.

ORDER OF TISSUE FITTING

We will fit the back first. Then you can measure to see if you need a full bust. The guide sheet is written in a unique fitting order. Follow the order to save time. Keep the guidesheet out until you are finished sewing the dress.

After you alter the pattern, mark final seamlines on tissue and leave even seam allowances.

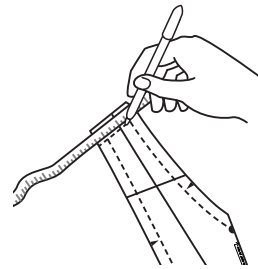
Fit the larger side of your body if it is obviously larger. Otherwise, tissue-fit your right side.

TISSUE-FITTING AND ALTERING THE PATTERN

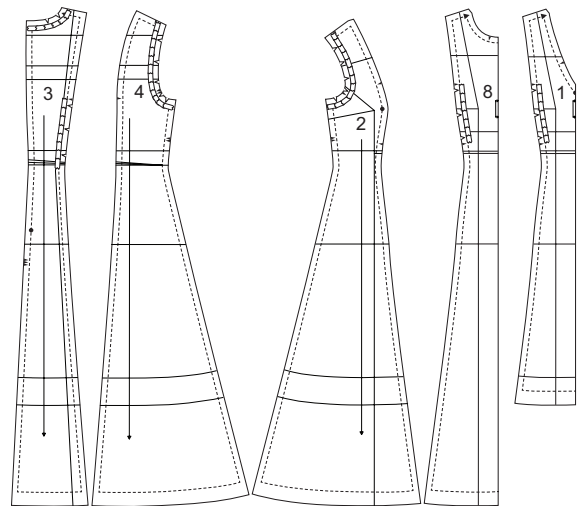
Getting the Tissue Ready

Trim around the tissue just **OUTSIDE** the cutting line for your size. Press tissue with a dry iron set at **WOOL** setting.

For accuracy, with tissue **RIGHT SIDE UP**, mark stitching lines 5/8" (1.5cm) from cut edges on neck, armhole, shoulder, front and back princess seams, side seams and center back. Using a 5/8" (1.5cm) wide tape measure makes this easy.

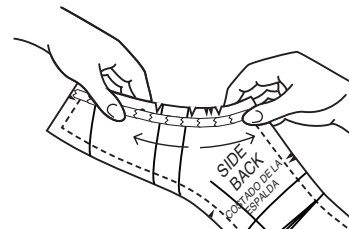


Using 1/2" (1.3cm) Scotch™ Magic™ Tape (green box), tape the front and back armhole, back neckline as well as the front and back curves, as shown, **INSIDE** the stitching line to prevent the tissue from tearing when trying on. Always tape on the right side, you can press with an iron on the wrong side! Use small pieces of tape around curves, lapping them.



Clip the curves to the tape. **DO NOT CUT TAPE.**

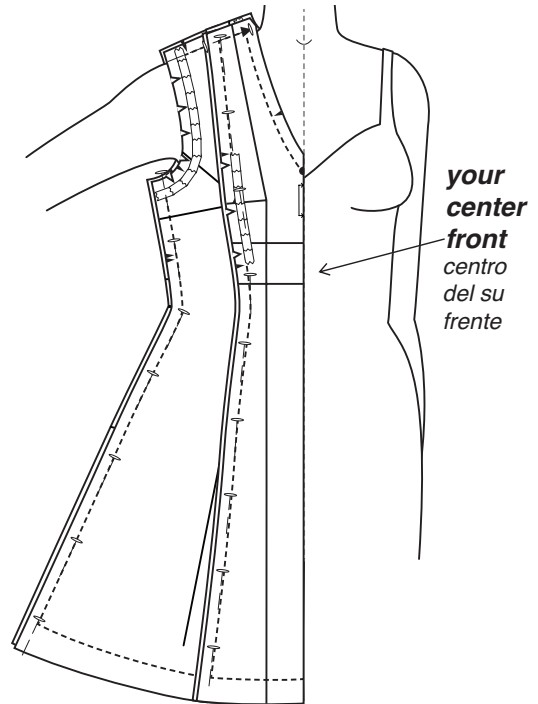
Tug lightly on tissue to see if it is taped securely.



QUICK TIP: Use PERFECT PATTERN PAPER alteration tissue from Palmer/Pletsch for Butterick to fill openings when adjustments are made. It makes it easy to lengthen or add width evenly. It won't overpower the tissue since it is the same weight. The grid is helpful for adding equal amounts on all pieces. Available at www.palmerpletsch.com.

Try on the Tissue

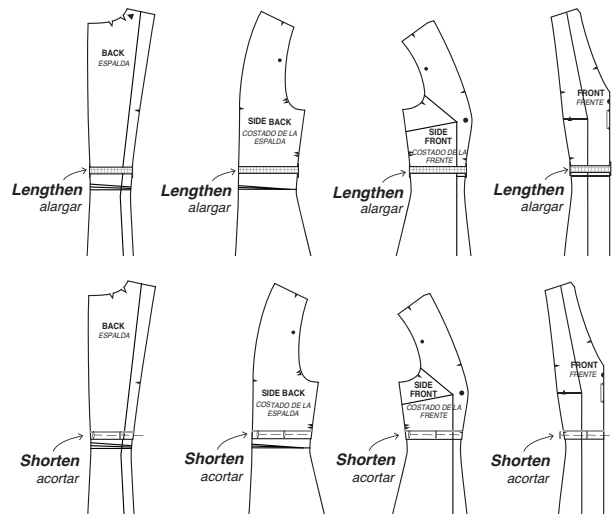
Pin seams, **WRONG SIDES TOGETHER** at princess seams, shoulders and sides. The first pins go into neck/shoulder and armhole/side seam intersections and point down.



TISSUE IS A NO-GUESS METHOD! Try on. Make sure the tissue comes to your center front and center back. Don't pin to a bra since dress will skim across, not mold to your body at center front. Pull tissue snugly over your bust, but if pattern won't reach your center front or center back, read on.....

Waist Length

The waistline marking will determine length needed. Using the Lengthen or Shorten line, add or subtract tissue. To lengthen, cut on the line and add the same amount of tissue to the front and back. To shorten, draw a line above the lengthen or shorten line the amount you want to remove and bring the lines together and tape. If your front or back waist is lower or higher, we will fix that later.

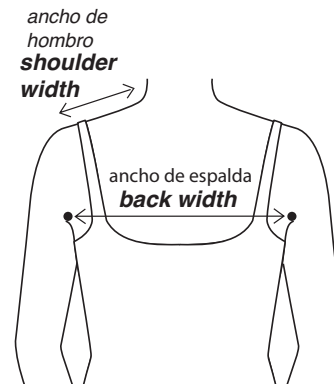


FIT TIP: If you are tall or short, you may need to lengthen or shorten across chest to make armhole deeper or shallower. Use the lengthen or shorten armhole lines on the FRONT and BACK pattern pieces. Do that before checking waist length.

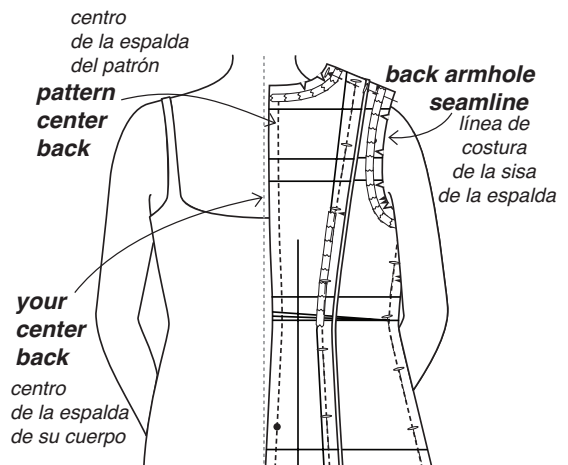
Broad Back

NOTE: There is confusion about broad back and broad shoulders.

Back width is measured at the crease of your back armhole about a third of the way up from the underarm seam.

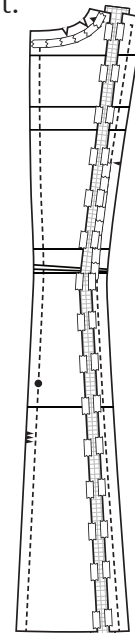


If the armhole stitching line is there, but the center back stitching line is not at your center back, you have a broad back. Measure from your center back to the pattern center back and that is the amount to add.



NOTE: If you are adding a sleeve, you may want to add a little more back ease for “reaching room”—say 1/4” (6mm). Sleeveless dresses won’t need it.

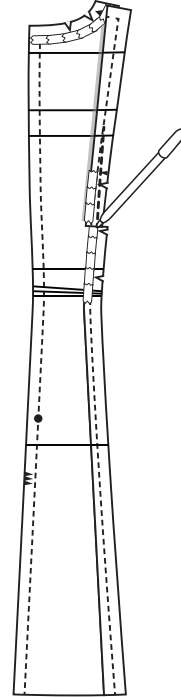
Cut on the broad back alteration line from the middle of the shoulder to the bottom. Spread the amount you need. Insert Pattern Paper to fill in the gap. Tape in place.



To make the back shoulder fit the front, take in the back shoulder princess seam to fit the front just in the shoulder area.

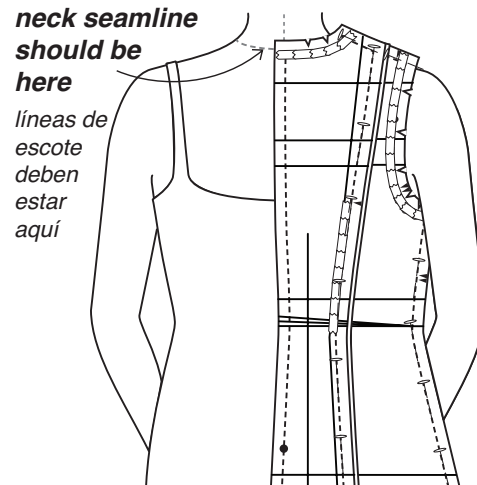
Narrow Back

If the tissue center back is past your center, fold on the alteration line to remove width. Adjust back princess seam at the shoulder to fit the front.

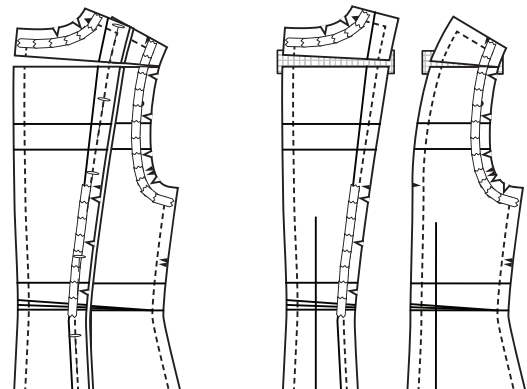


High Round Back

The back neck seamline should be at the base of your neck (where a necklace would lie.)



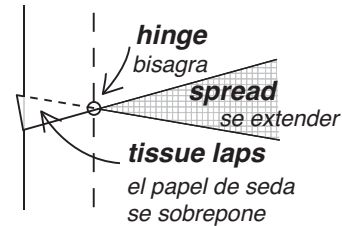
If you need to raise the seam, lap back pattern pieces at stitching lines and pin above and below high round back alteration line. Cut on the high round alteration line and raise the upper section 1/4" to 5/8" (6mm to 1.5cm). If you need a lot more, use the Low Round alteration line for the rest.



B6850 >> SEWING INSTRUCTIONS

Slash and raise the upper section 1/4" to 5/8" (6mm to 1.5cm). Slip Perfect Pattern Paper tissue under the opening. Tape to each back. Unpin. Cut Pattern Paper to divide them. Finish taping.

PRO TIP: The hinge: If you alter to the edge, the seamline will get longer. Cut the seam allowance to, BUT NOT THROUGH, the seamline to create a hinge. This will keep the seamlines the same size.

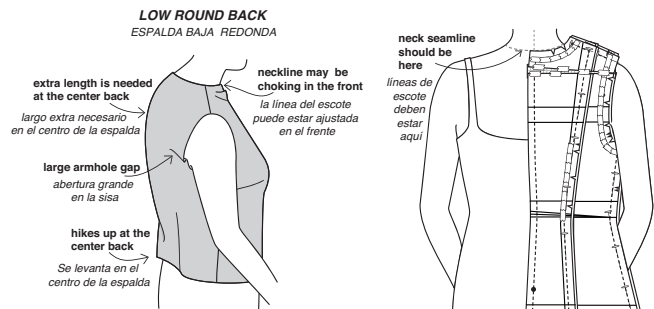


Low Round Back

Your garments will look like this:

Generally, high and low round are done together to make a more gradually curved center back seam.

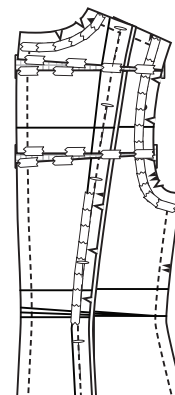
If you need more than 5/8" (1.5cm), first add 5/8" (1.5cm) for high round, then try on the tissue. Tape the tissue to your back, just below the line marked low round back.



Cut on that line and raise the upper back until the neck seam is at the base of your neck.

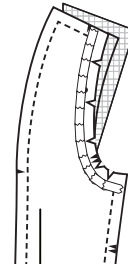
Tape over the opening to preserve the amount. (You will need help!)

Take off and unpin from front and fill in with tissue. The center back seam will now curve to fit your back.



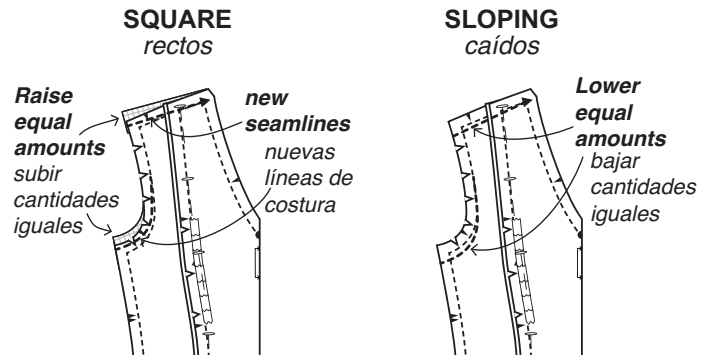
Slightly Round Back - Gap in Back Armhole

If your back armhole gaps, pin the back and side back seam deeper at the shoulder tapering to the original seam about 3"(7.5cm) down until the gap is gone. Add what is needed to the armhole edge to make the back shoulder fit the front as shown.



Square/Sloping Shoulders

If you have very square or sloping shoulders, they will affect the bust dart placement. Redraw shoulder seams deeper at the armhole for sloping shoulders and shallower for square shoulders, tapering to nothing at neckline. Raise or lower underarm the same amount.

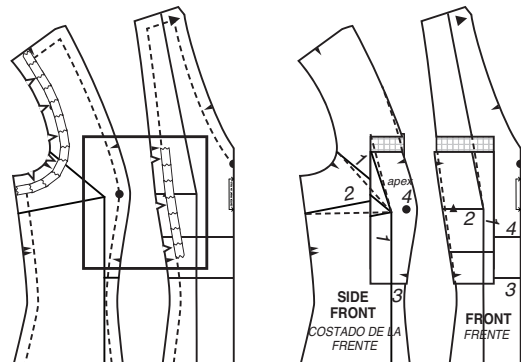


Full Bust

If you have a broad back, alter the back first in order to accurately measure the amount you need to get the center front of the tissue to your center front.

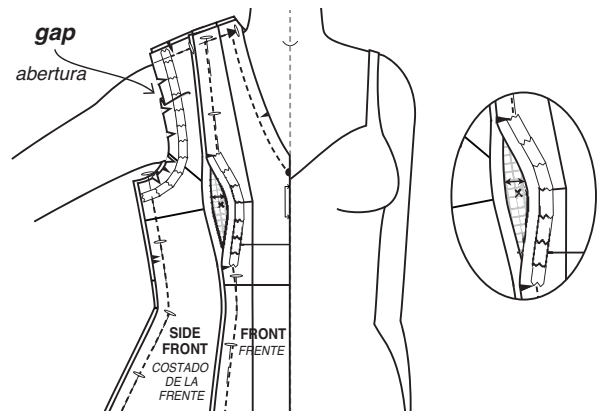
LOWER OR RAISE BUST FULLNESS TO MATCH YOURS!

Draw a box above and below the notches around the bust area and cut out the box. Lower to where your fullness is. Add tissue and tape in place. True the edges as shown. Redraw Line 1 and Line 2 as shown.



PRINCESS SEAM PLACEMENT

Unpin the tissue in your bust area. If you are very full busted, you may need to unpin to the hemline. Try on the tissue and pull the center front to your center front. To make sure the princess seam is centered over your bust, you may need to add to BOTH FRONT and SIDE



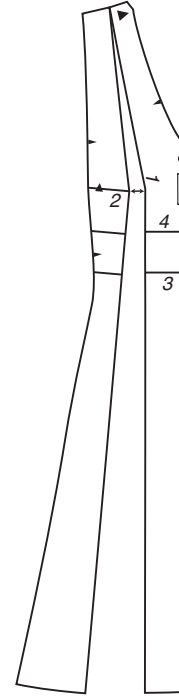
B6850 >> SEWING INSTRUCTIONS

FRONT. Measure the total amount from seam line to seamline. Decide how much to add to side front and front. In our instructions, we will assume you need to add to both.

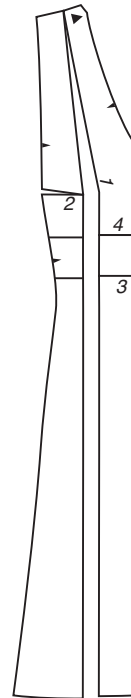
X = bust point (apex)

Front:

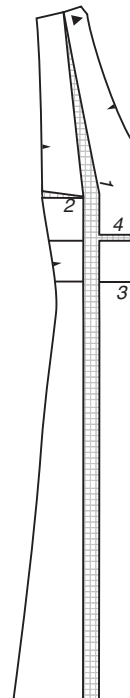
1. Start with the front. Cut on Line 1 and spread the width you need at arrow.



2. Cut on Line 2 and spread until Line 1 edges are parallel.



3. Cut on Line 4 and lower bottom section until hem is even. Fill with tissue.

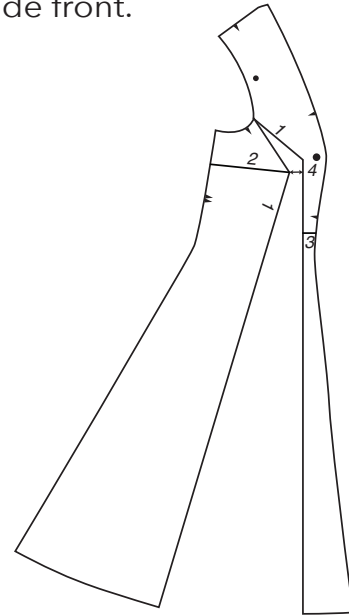


B6850 >> SEWING INSTRUCTIONS

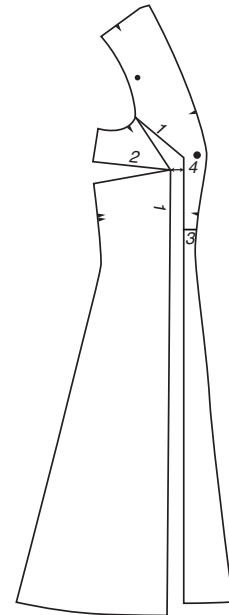
NOTE: You will finish the front AFTER you alter the side front.

Side Front:

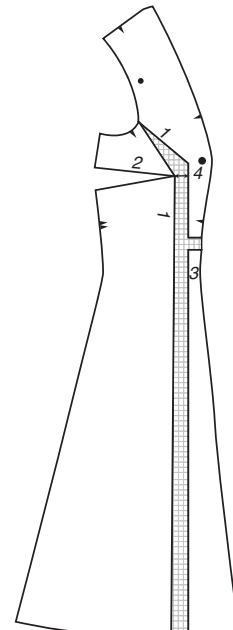
4. Cut on Line 1. Spread the amount needed at the arrow.



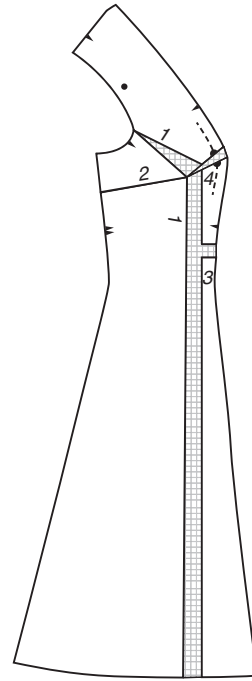
5. Cut on Line 2. Lower side front until Line 1 edges are parallel.



6. Cut on Line 3. Lower section below Line 3 until hem is even. Fill Line 1 and Line 3 with tissue.

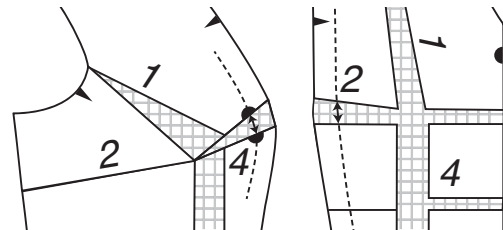


7. Cut from the cut edge at the circle (4) to Line 2. Close Line 2 and Line 4 will open.



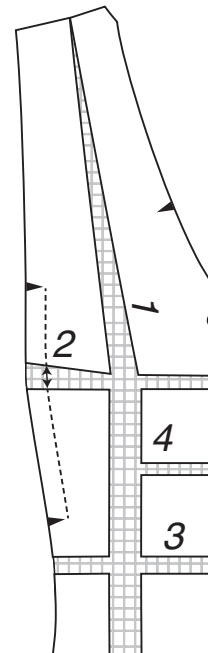
The FRONT Again:

8. Cut at Line 2 across front. Spread so Line 2 on FRONT and Line 4 on SIDE FRONT match. Match the FRONT and SIDE FRONT at the stitching line, NOT at the cut edge!



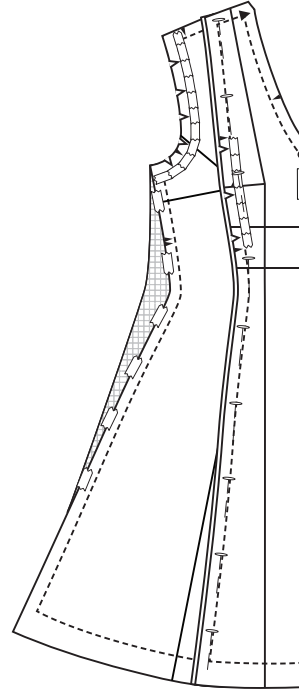
NOTE: Line 2 will be uneven because you opened it in step 3 and again in step 8.

9. Cut the FRONT on Line 3 and lengthen same amount as line 3 on SIDE FRONT.



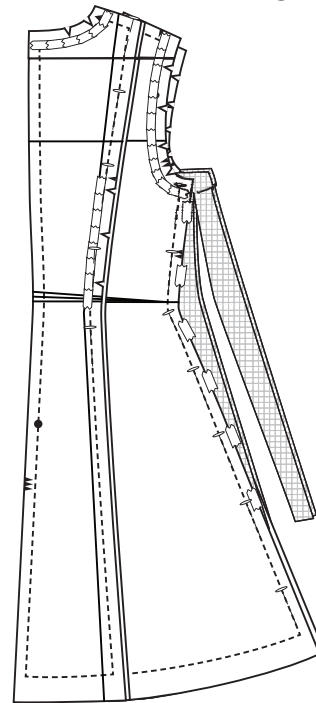
HIP AND WAIST WIDTH

If you think you will need more waist or hip room, tape a chunk of tissue or Perfect Pattern Paper that is more than you will need equally to the side front and side back. Tape tissue to the side seams of the pattern.

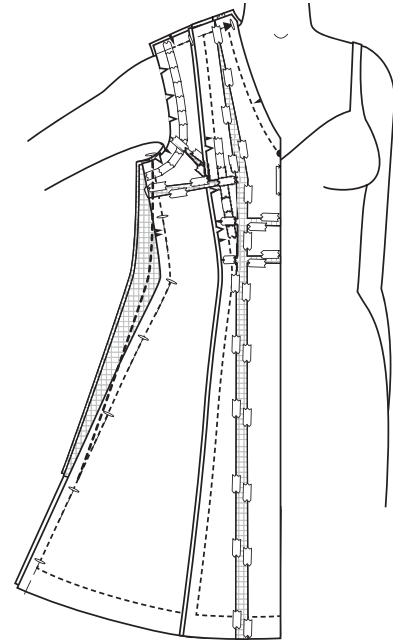


To get the same amount added to both front and back, do the following:

1. With right side of tissue up, slip rectangles of tissue wider than you will need under both the front and back side seams. Tape tissue to the pattern. Then, always press tissue from wrong side to avoid tape.

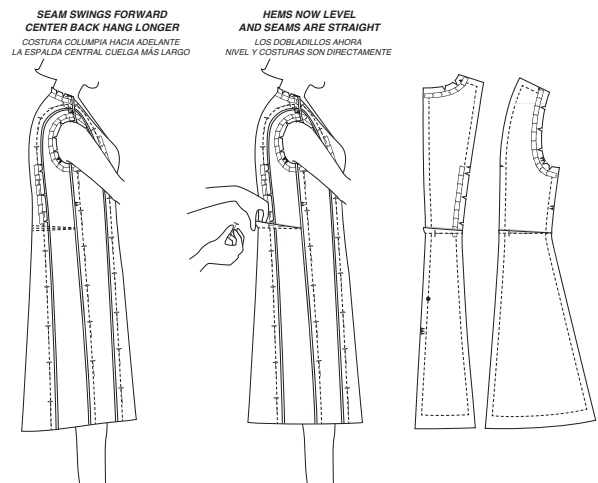


2. Pin front and back side seams together on original cutting lines.
3. Trim through both layers of the added tissue to nothing at underarm, leaving more tissue than you think you will need.
4. Pin front to back at the upper side seam, just below the armhole. Leave the rest of the side seam unpinned.
5. Try on and pin the rest of the side seam together, skimming your body. If you have a thick waist, your side seam will become straighter than the pattern. FIT LOOSELY ENOUGH TO ALLOW FOR EXPANSION DURING THE DAY! Mark pins at new side seam. Trim, leaving a 1" (2.5cm) seam allowance.



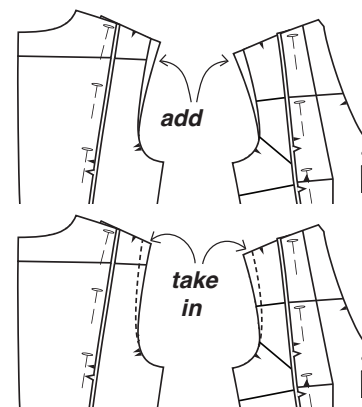
SWAY/FLAT BACK

If you have a flat derriere (or sway back), the hem will be longer in the back and the side seams will swing forward. Pinch a tuck at the center back to nothing at the side until the hem is parallel to the floor and the side seams are straight. Take off the tissue and make a dart shaped tuck across the back pieces using the lines printed on the tissue. Some people will need a deeper tuck. Add additional lines if needed. The center back seam will curve slightly. That's ok!



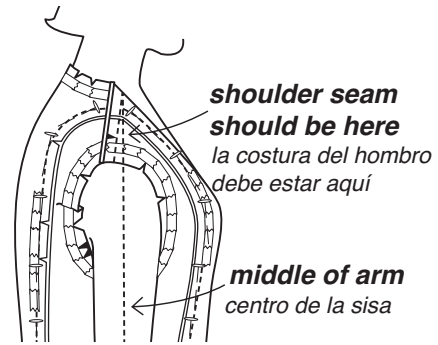
BROAD/NARROW SHOULDERS

Find the spot at the top of your shoulder where you want the sleeve cap seam. Is the armhole stitching line at that spot? If not, make the armhole at the shoulder wider or narrower, tapering to nothing about two-thirds the way down, about where the notches are.

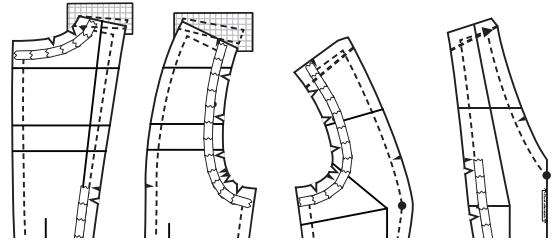


Forward Shoulder:

The use of computers and sitting at desks has contributed to a new fit phenomenon for all ages, the forward shoulder. If your clothes won't stay on your shoulders, you are a candidate. Look at your shoulder seam.



Alter by pivoting the ARMHOLE EDGE of the shoulder seam forward until it is in the middle of your arm.

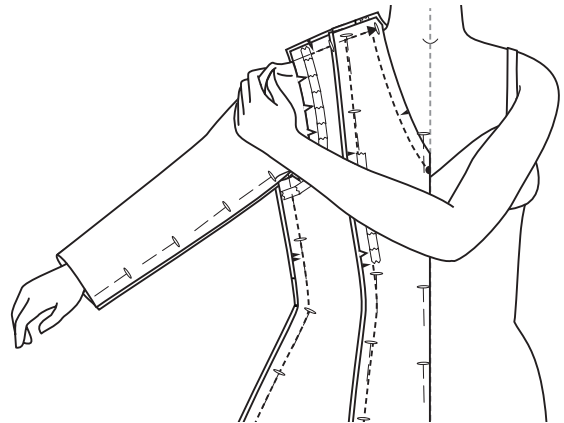


Redraw shoulder seam as shown. Leave 5/8" (1.5cm) seam allowances on front and back. When sewing in the sleeve, match the circle on the sleeve cap to the new shoulder seamline.

SLEEVE ADJUSTMENT A, B

FULL/THIN ARMS:

Pin sleeve seam, wrong sides together. With dress tissue on, bring sleeve tissue up until underarm seam matches dress underarm seam. Check width. For woven fabrics, you should be able to pinch at least an 1" (2.5cm) of tissue at the full upper arm area for 2" (5cm) ease.

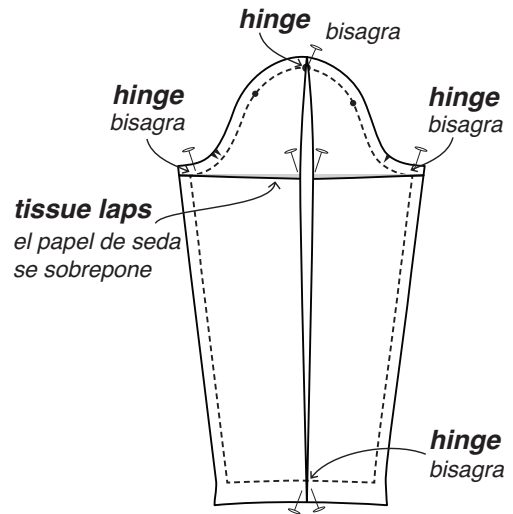


If you can't get the sleeve on, unpin and measure underarm seam on dress to underarm seam on sleeve and compare to your full upper arm measurement. Add enough width to match your arm measurement, plus 1/2" (1.3cm) for ease. If you need more than 1-1/2" (3.8cm), add the rest to the underarm seam and add that same amount to the bodice at underarm seam.

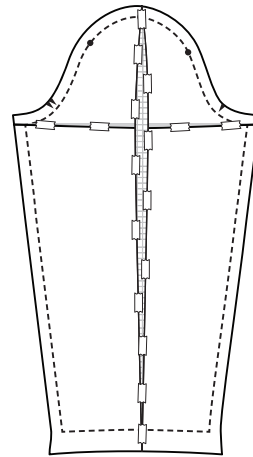
Our fit book has many solutions for people with really full upper arms.

Full Arms:

Alter the long sleeve first, even if you want a short sleeve. After altering, cut on the line for the short sleeve. Cut on the horizontal and vertical alteration lines. ALWAYS CUT TO SEAM LINES or HEMLINES, NOT TO OUTER EDGES. Your "hinges" will be at the seam lines and hemline.

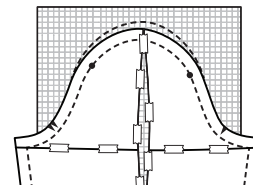


Pull on the tissue at the sides of the horizontal cut and widen sleeve the amount you need. The pattern will lap at the horizontal line. Insert tissue and tape in place. Try on again. Check fit.



Cap Height:

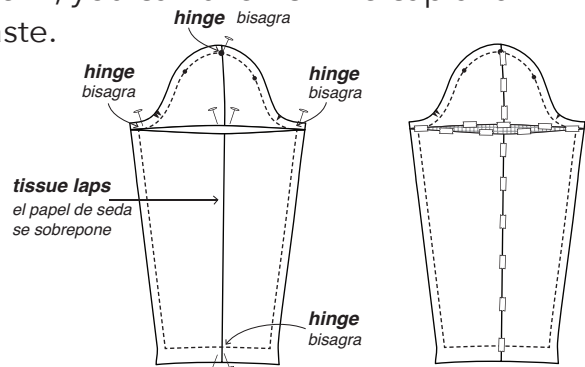
If you've widened the sleeve 3/4" (2cm), raise the cap 3/8" (1cm). If more than 3/4" (2cm), add 5/8" (1.5cm) to the seam allowance at the top of the cap just in case you need it. This will prevent drag lines pointing to the cap.



Baste sleeve in first. If this is too much to ease in, you can unstitch the cap and trim some of what you added away and rebaste.

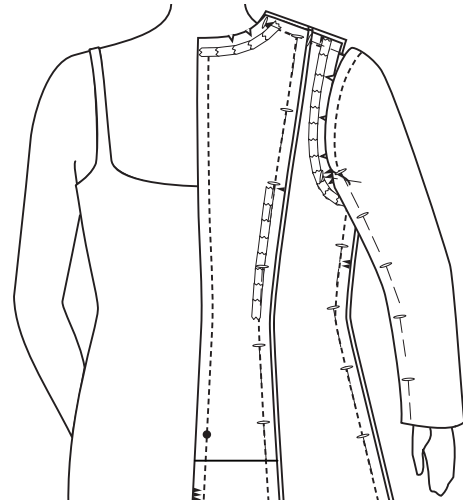
Thin Arms:

For a narrower sleeve, push in on sides and the sleeve will lap vertically. Fill in the horizontal space with Perfect Pattern Paper or other tissue.



Sleeve Length:

Pin the sleeve seam and then try it on matching the underarm seams.



Then check the hem length by folding up the hem. Use the Lengthen or Shorten line to get the correct length.

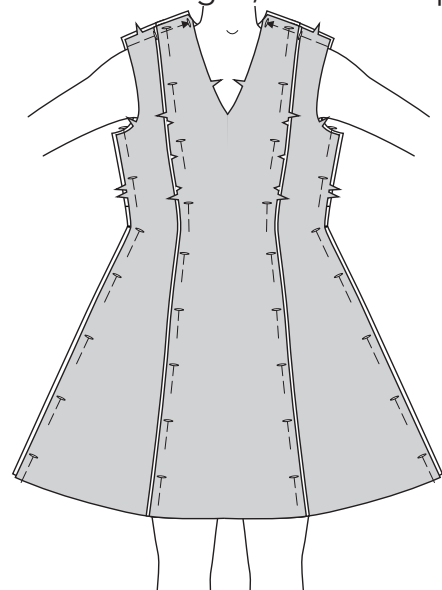
Finished Length of Dress

If you want your dress length longer or shorter, use the LOS or Lengthen or Shorten lines printed on the dress tissue.

SEWING INSTRUCTIONS DRESS A, B, C

FIT TIP: Always fit after you've cut the fabric as you tissue-fitted only one side of the body. In fabric you'll tweak both sides. Pin seams on the outside, **WRONG SIDES TOGETHER**. Try on **RIGHT SIDE OUT** to check fit. If one shoulder is more sloping or square than the other, pin to fit. Lower or raise underarm seamline the same amount. Adjust seams if too loose or tight. If you are fuller or flatter in tummy or derriere, you can also adjust the princess seams in those areas. Sometimes, if you've done a full bust adjustment, there may be too much fullness in the side front at the bust. If so, you need to slip the side front in the bust area out a bit and trim away some of the curve for a smoother fit. Check length. Take off. Where you've made changes, mark on top of the pins with chalk on the wrong side of the fabric.

FIT TIP: Pin front to back at shoulders, center backs and sides, wrong sides together. Try on dress. Adjust seams until you get the fit you desire. Mark any changed stitching lines.

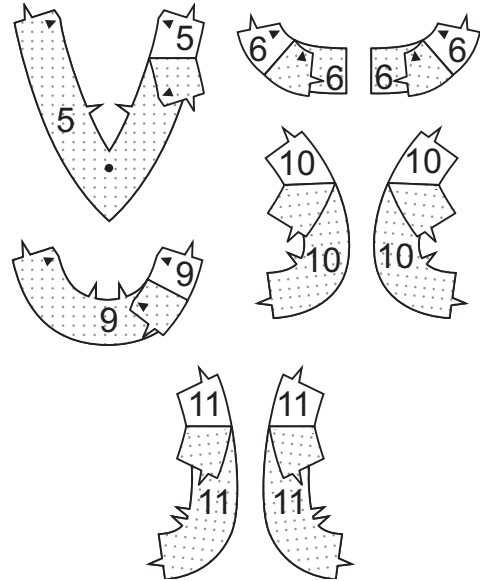


NOTE: The first view mentioned will be illustrated unless otherwise indicated.

INTERFACING

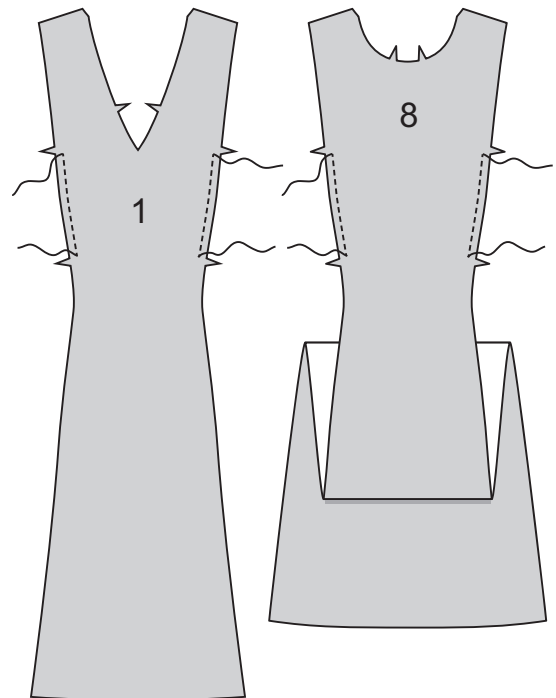
PRO TIP: Interface facings. PerfectFuse Sheer works well on most fabrics. We like fusible weft interfacings. PerfectFuse interfacings are 60" to 66" (150cm to 168cm) wide and are available through Butterick in Australia and Palmer/Pletsch in the U.S. and Canada. (www.palmerpletsch.com).

- 1 Fuse INTERFACING to wrong side of each matching FABRIC section, following manufacturer's instructions.

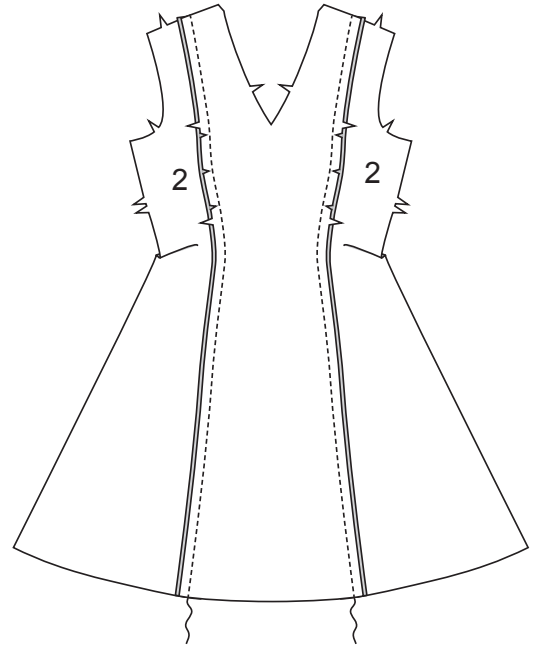


FRONT AND BACK

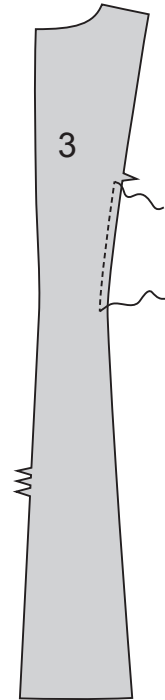
- 2 STAYSTITCH side front edges of FRONT (1) or FRONT (8) between notches.



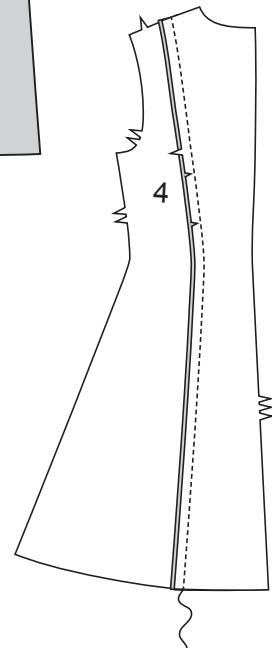
- 3** Pin SIDE FRONT (2) sections to front at side front edges, clipping front where necessary. Stitch.



- 4** **STAYSTITCH** side back edge of BACK (3) from waist edge to notch.



- 5** Pin SIDE BACK (4) to back at side back edge, clipping back where necessary. Stitch.

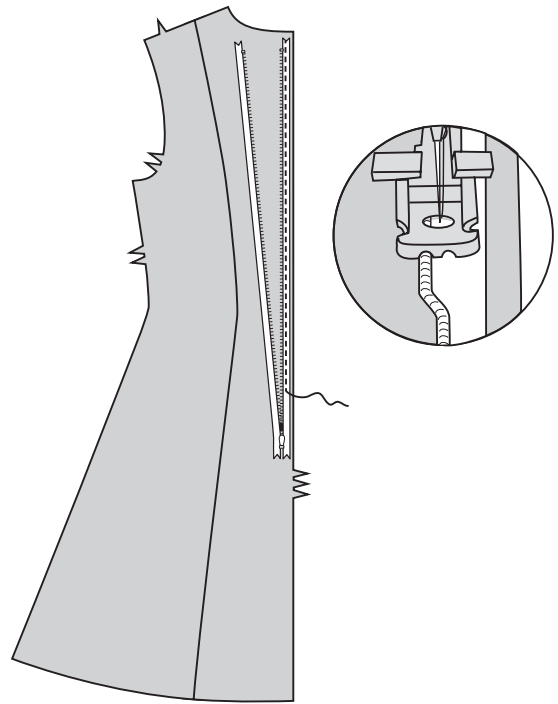


ZIPPER AND REMAINING SEAMS

NOTE: Use special invisible zipper foot when stitching invisible zipper. Or, press the teeth flat and use a regular zipper foot.

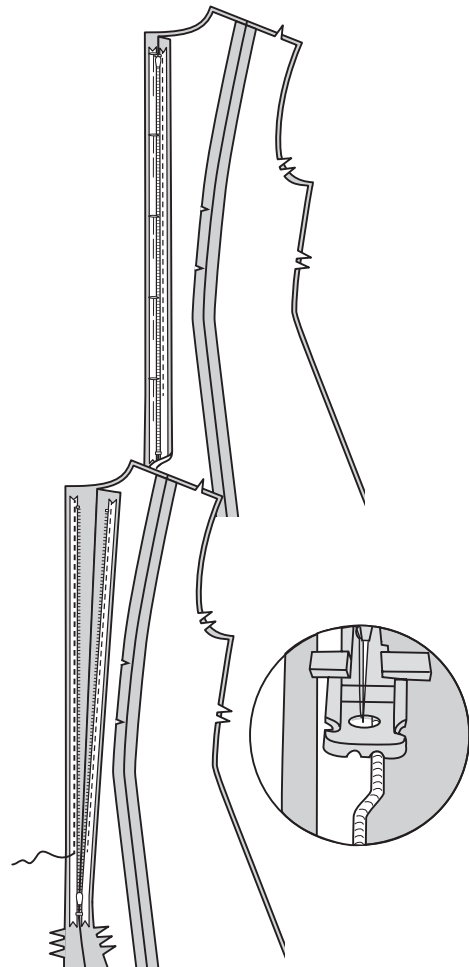
- 6** Open zipper. On outside, pin zipper to left back opening edge, face down in seam allowance, placing zipper tape 1" (2.5cm) down from upper edge of fabric and zipper teeth on seamline. Position left-hand groove of zipper foot over teeth. Stitch from upper edge to as close as possible to circle.

PRO TIP: Fuse 1" (2.5cm) wide strips of fusible interfacing to the wrong side in zipper area. That way the fabric won't stretch. Lengthwise strips of PerfectFuse Sheer work well.



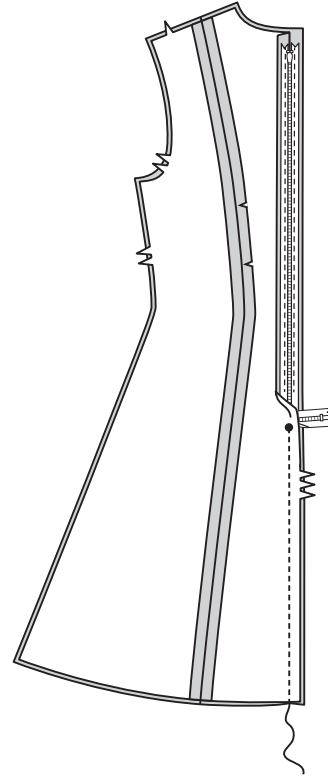
- 7** Close zipper. Pin remaining zipper tape to right back opening edge, placing zipper teeth on seamline.

- 8** Open zipper. Position right-hand groove of zipper foot over teeth. Stitch from upper edge until foot touches slider.

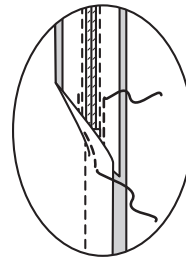


9 Close zipper. Slide zipper foot to notch on the left. Pin back sections together below lower large circle. Position and lower needle slightly above and to the left of zipper stitching at large circle. Stitch center back seam below large circle.

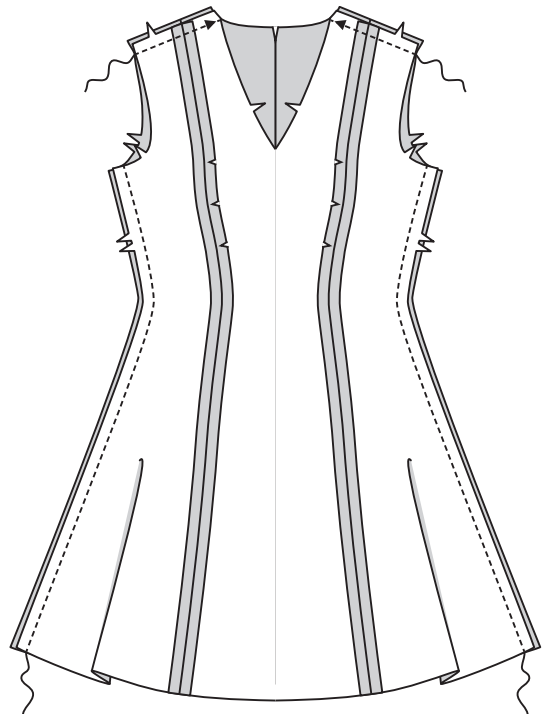
NOTE: Do not cut off end of zipper.



10 Stitch each end of zipper tape to seam allowance, keeping back free when stitching.



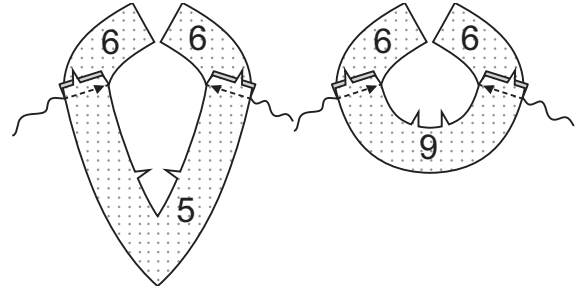
11 Stitch back to front at shoulders and sides.



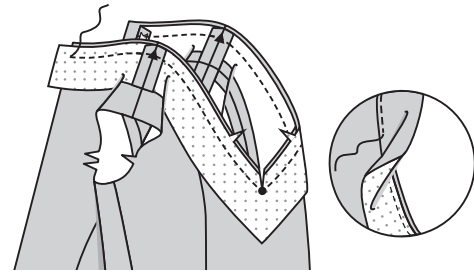
NECK FACING

12 Stitch FRONT NECK FACING (5) or FRONT NECK FACING (9 to each BACK NECK FACING (6) at shoulders.

Finish unnotched edge of facing.

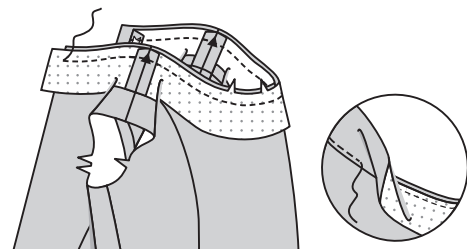


13 For Views A, B: Pin facing to neck edge, right sides together, matching notches, centers and seams. (Back edges extend 5/8" (1.5cm)). Stitch, pivoting at center front. Clip to center front. Trim seam allowances.

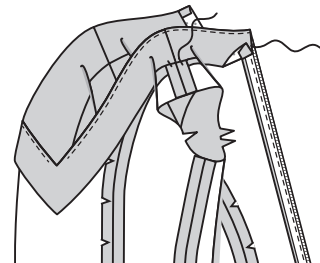


14 For View C: Pin facing to neck edge, right sides together, matching notches, centers and seams. (Back edges extend 5/8" (1.5cm)). Stitch. Trim seam allowances.

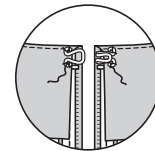
UNDERSTITCH facing.



15 Turn facing to inside, turning in back edges of facing to clear zipper teeth. Press. **SLIPSTITCH** to zipper tapes. Tack at seams.



16 Sew hook and eye above zipper.

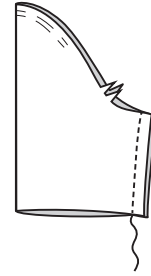


SLEEVE A, B

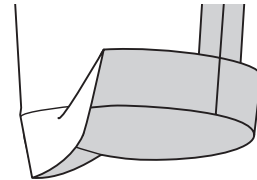
17 **EASESTITCH** cap of SLEEVE (7) between small circles.



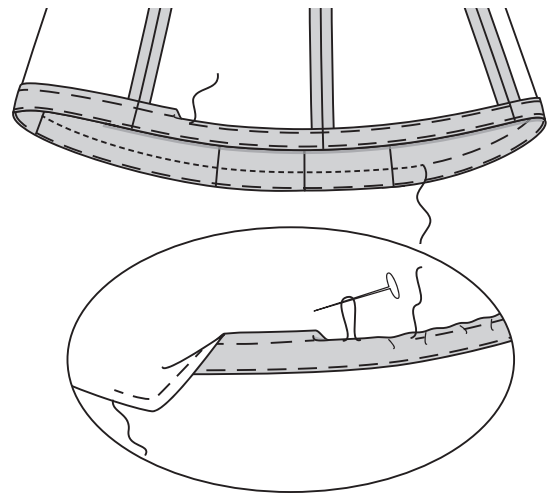
18 Stitch sleeve seam.



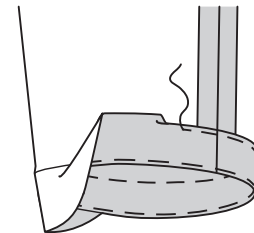
19 For View A: Turn up a 1-1/4" (3.2cm) hem on lower edge of sleeve.



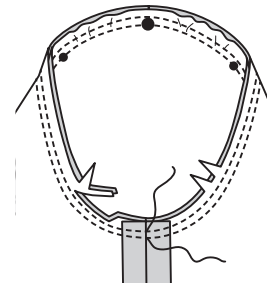
20 For View B: Turn up lower edge of sleeve along hemline.



21 Baste hem close to fold. Turn under 1/4" (6mm) on raw edge. Baste hem in place close to upper edge. Press.



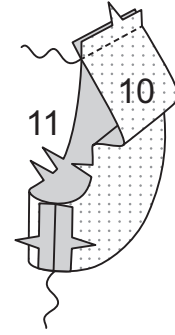
22 With right sides together, pin sleeve into armhole edge, matching notches, underarm seams, small circles and large circle to shoulder seam. Adjust ease. Baste. Stitch. Stitch again 1/4" (6mm) away in seam allowances. Trim close to second stitching. Press seam allowances flat. Turn seam allowances toward sleeve.



ARMHOLE FACING C

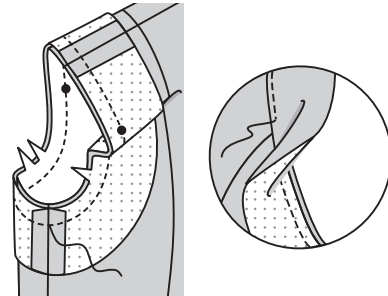
23 Stitch FRONT ARMHOLE FACING (10) to BACK ARMHOLE FACING (11) at shoulders and sides.

FINISH un-notched edge of facing.

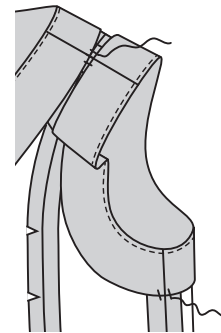


24 Pin facing to armhole edge, right sides together, matching notches, circles and seams. Stitch. Trim seam allowances.

UNDERSTITCH facing.



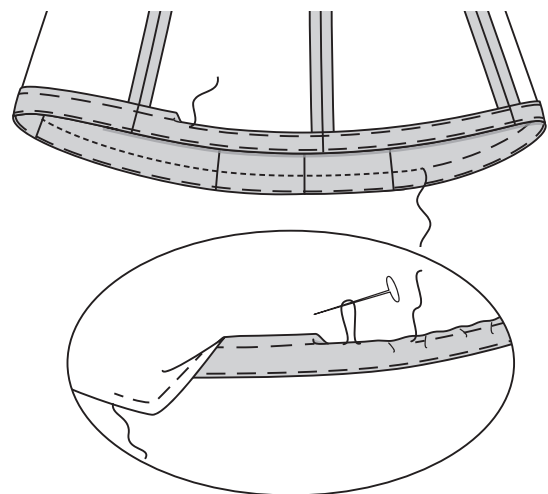
25 Turn facing to inside. Press. Catchstitch facing to seams.



HEM

26 Turn up a 1-1/2" (3.8cm) hem on lower edge of dress. Baste close to fold. Machine-baste 1/4" (6mm) from raw edge. Pull up bobbin thread and adjust fullness; shrink out with steam. Turn under 1/4" (6mm) on raw edge. Baste hem in place close to upper edge. Press.

TOPSTITCH hem along upper basting.





Congrats!


You've completed your sewing adventure!

SHARE
YOUR look!



Post your pattern and tag us at
@McCALLPATTERNCOMPANY and use #MCCALLSPATTERNS
for a chance to be featured on our social media!

Look for more Butterick PDF patterns at **McCALLPATTERN.COM**

 1-800-255-2762