



PDF PATTERNS

B6757

>> MISSES' DRESS
AND SASH

02

PIECES AND
NOTIONS

03

CHARTS

04

CUTTING
LAYOUTS

10

PATTERN
MARKINGS

11

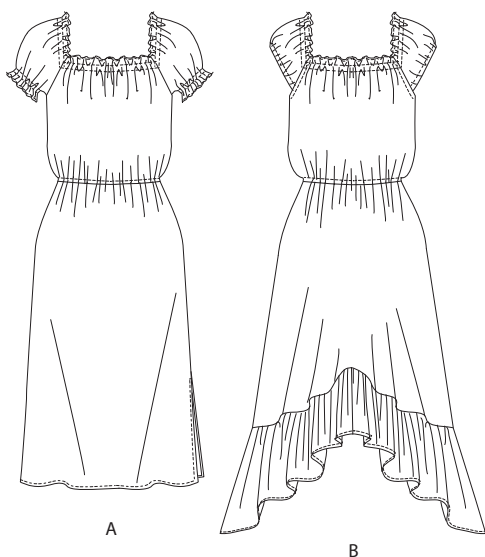
SEWING
INSTRUCTIONS



Butterick®

SKILL LEVEL: EASY

FIND THE PERFECT FIT!



THINGS YOU NEED:

> A.B: 4¾ yds. of ¼" Elastic, One Pkg. of ½" Single Fold Bias Tape.

SUGGESTED FABRICS:

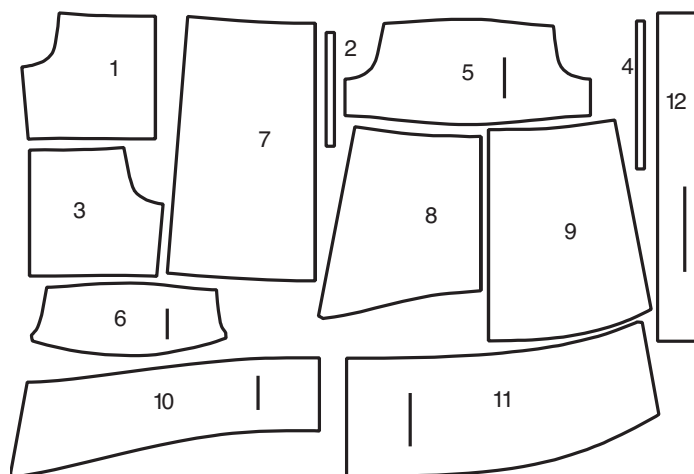
> Gauze, Crepe, Double Georgette, Cotton Blends.

Your printed tile pieces should be assembled before you move on to this step!

PIECES (12)

DRESS A, B

- 1 BODICE FRONT
- 2 GUIDE FOR ELASTIC (NECK)
- 3 BODICE BACK
- 4 GUIDE FOR ELASTIC (SLEEVE)
- 5 SLEEVE A
- 6 SLEEVE B
- 7 SKIRT FRONT AND BACK A
- 8 SKIRT FRONT B
- 9 SKIRT BACK B
- 10 FRONT RUFFLE B
- 11 BACK RUFFLE B
- 12 SASH A



CHARTS

YARDAGE CHARTS

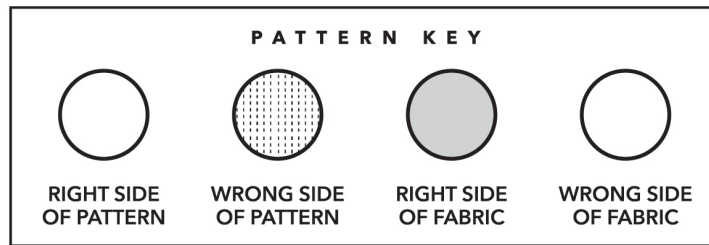
SIZES	8	10	12	14	16	18	20	22	24	
VIEW A										
45*/**	3 $\frac{1}{8}$	3 $\frac{1}{4}$	3 $\frac{3}{8}$	3 $\frac{3}{8}$	3 $\frac{3}{8}$	3 $\frac{3}{8}$	3 $\frac{1}{2}$	3 $\frac{1}{2}$	3 $\frac{1}{2}$	yds.
60*/**	2 $\frac{3}{8}$	2 $\frac{3}{8}$	2 $\frac{3}{8}$	2 $\frac{3}{8}$	2 $\frac{3}{8}$	3 $\frac{1}{8}$	3 $\frac{1}{8}$	3 $\frac{1}{8}$	3 $\frac{1}{4}$	yds.
VIEW B										
45*/**	4 $\frac{3}{4}$	4 $\frac{3}{4}$	4 $\frac{3}{4}$	4 $\frac{7}{8}$	4 $\frac{7}{8}$	4 $\frac{7}{8}$	4 $\frac{7}{8}$	4 $\frac{7}{8}$	4 $\frac{7}{8}$	yds.
60*/**	3 $\frac{5}{8}$	3 $\frac{5}{8}$	3 $\frac{5}{8}$	4 $\frac{3}{8}$	4 $\frac{1}{2}$	4 $\frac{1}{2}$	4 $\frac{1}{2}$	4 $\frac{1}{2}$	4 $\frac{1}{2}$	yds.

FINISHED GARMENT MEASUREMENTS

SIZES	8	10	12	14	16	18	20	22	24	
BACK LENGTH FROM BASE OF NECK										
VIEW A	45 $\frac{1}{4}$	45 $\frac{1}{2}$	45 $\frac{3}{4}$	46	46 $\frac{1}{4}$	46 $\frac{1}{2}$	46 $\frac{3}{4}$	47	47 $\frac{1}{4}$	in.
VIEW B	52 $\frac{3}{4}$	53	53 $\frac{1}{4}$	53 $\frac{1}{2}$	53 $\frac{3}{4}$	54	54 $\frac{1}{4}$	54 $\frac{1}{2}$	54 $\frac{3}{4}$	in.

BODY MEASUREMENTS

SIZES	8	10	12	14	16	18	20	22	24	
BUST	31 $\frac{1}{2}$	32 $\frac{1}{2}$	34	36	38	40	42	44	46	in.
WAIST	24	25	26 $\frac{1}{2}$	28	30	32	34	37	39	in.
HIP	33 $\frac{1}{2}$	34 $\frac{1}{2}$	36	38	40	42	44	46	48	in.
BACK WAIST LENGTH	15 $\frac{3}{4}$	16	16 $\frac{1}{4}$	16 $\frac{1}{2}$	16 $\frac{3}{4}$	17	17 $\frac{1}{4}$	17 $\frac{1}{2}$	17 $\frac{3}{4}$	in.



CUTTING AND MARKING

Position fabric as indicated on layout. If layout shows:

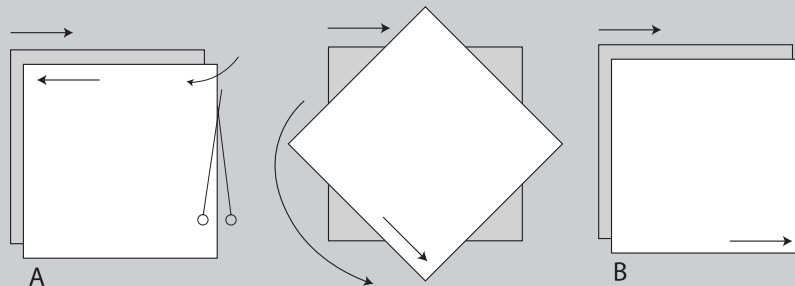
- > **GRAINLINE** - Place on straight grain of fabric, keeping line parallel to selvage or fold. ON "with nap" layout arrows should point in the same directions. (On Fur Pile fabrics, arrows point in direction of pile.)



- > **SINGLE THICKNESS** - Place fabric right side up. (For Fur Pile fabrics, place pile side down)
- > **DOUBLE THICKNESS**

WITH FOLD: Fold fabric right sides together.

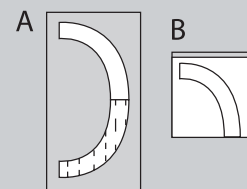
WITHOUT FOLD: With right sides together, fold fabric CROSSWISE. Cut fold from selvage to selvage (A). Keeping right sides together, turn upper layer completely around so nap runs in the same direction as lower layer.



- > **FOLD** - Place edge indicated exactly along fold of fabric. NEVER cut on this line.

When pattern piece is shown like this:

- > Cut other pieces first, allowing enough fabric to cut this piece (A). Fold fabric and cut piece on fold, as shown (B).



★ Cut piece only once. Cut other pieces first, allowing enough fabric to cut this piece. Open fabric; cut piece on single layer.

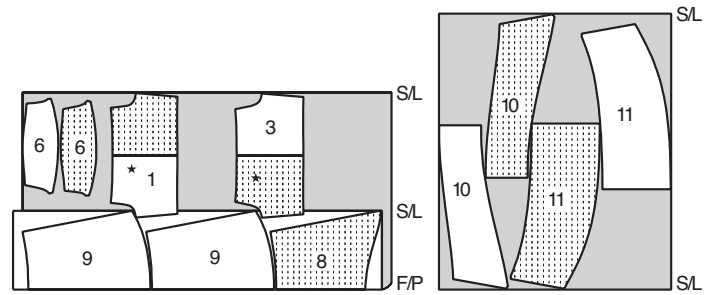
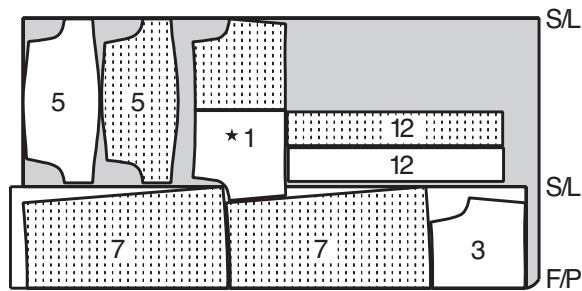
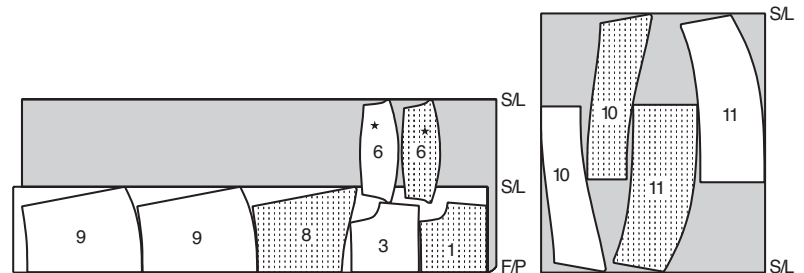
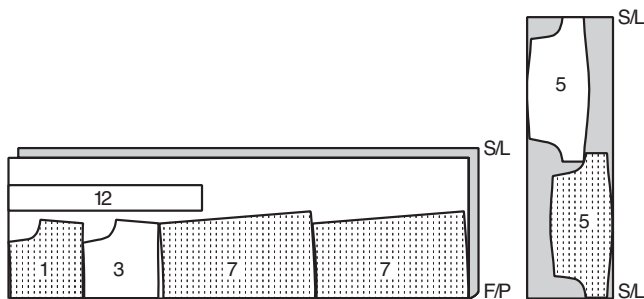
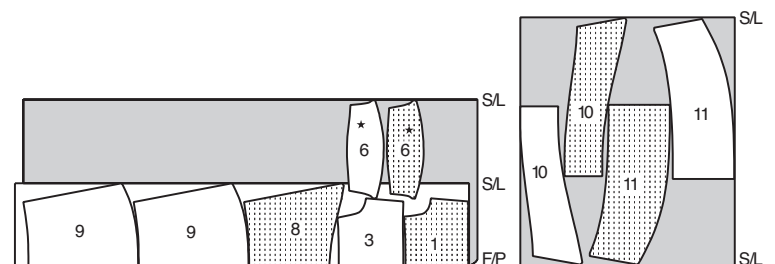
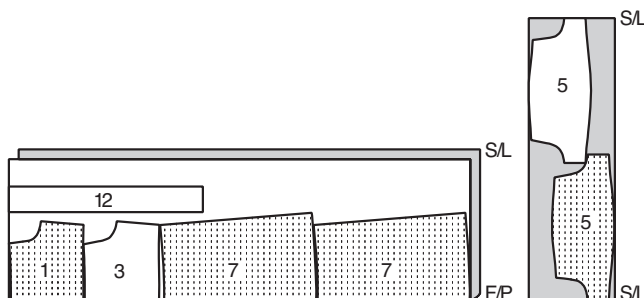
- > Cut out all pieces along cutting line indicated for desired size using long, even scissor strokes, cutting notches outward.
- > Transfer all markings and lines of construction. (Fur Pile fabrics, transfer markings to wrong side.)
- > Note: Broken-line boxes (a! b! c!) in layouts represent pieces cut by measurements provided.

1 DRESS A

PIECES: 1,3,5,7 & 12

45" (115 cm)

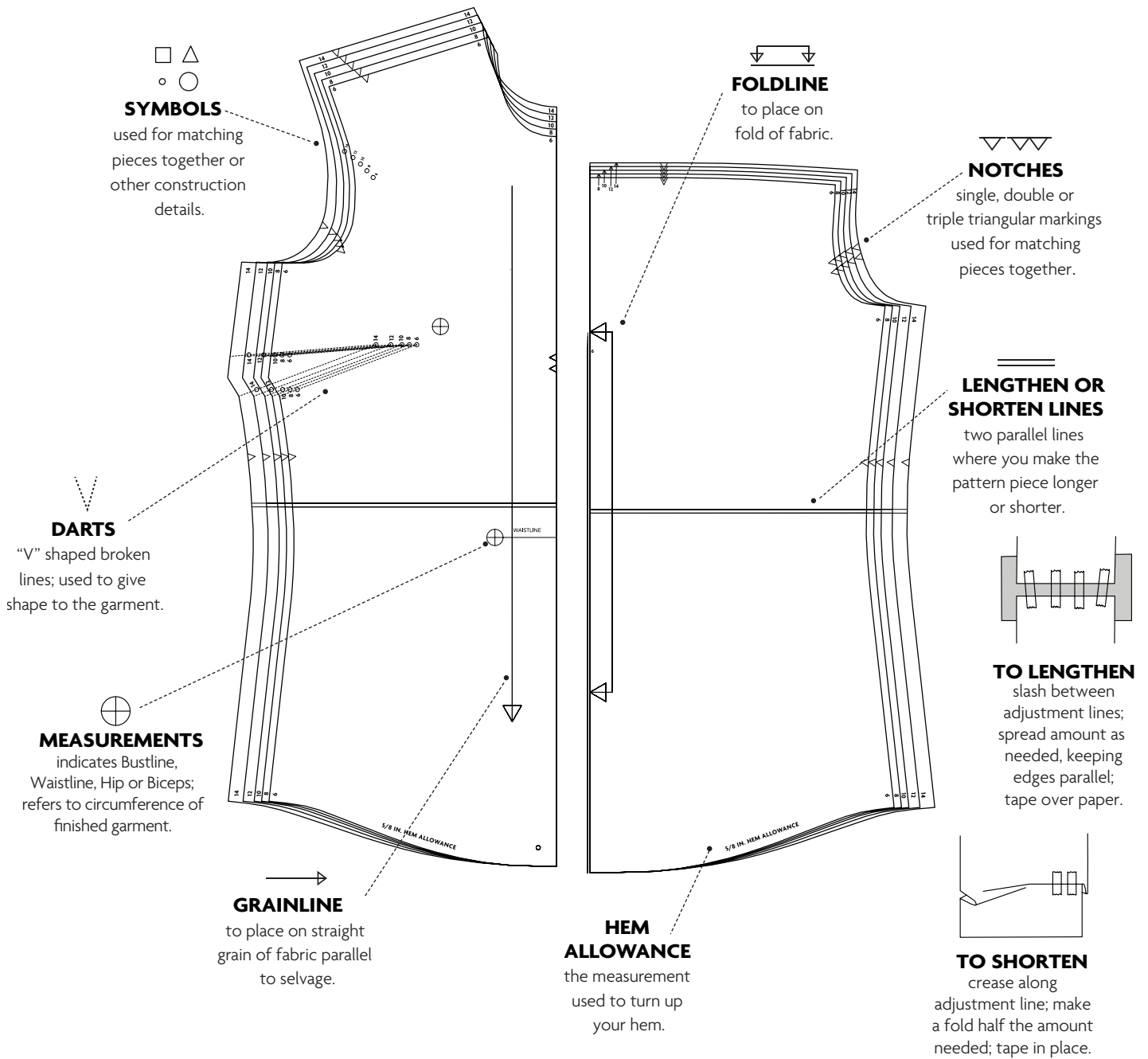
ALL SIZES

60" (150 cm)
SIZES: 8-10-1260" (150 cm)
SIZES: 8-10-12-14-1660" (150 cm)
SIZES: 14-16-18-20-2260" (150 cm)
SIZES: 18-20-22-24**2 DRESS B**

PIECES: 1,3,6,8,9,10 & 11

45" (115 cm)

ALL SIZES



FABRIC KEYRIGHT SIDE
FABRICWRONG SIDE
FABRIC

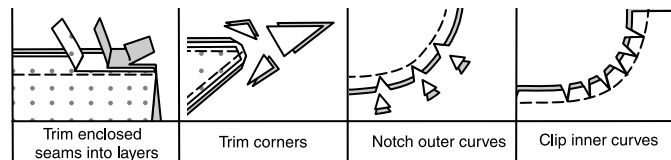
INTERFACING

RIGHT
SIDE LININGWRONG
SIDE LINING

PATTERN PIECES WILL BE
IDENTIFIED BY NUMBERS THE
FIRST TIME THEY ARE USED.

SEAM ALLOWANCES:

- > Use $\frac{5}{8}$ " (1.5 cm) seam allowances unless otherwise indicated.
- > Pin or baste seams, right side together, matching notches. Fit garment before stitching major seams.
- > Press seam allowances flat; then open unless otherwise stated. Clip where necessary so they lie flat.



The following terms appear in **BOLD TYPE** throughout your sewing instructions!

> **GATHER**

Stitch along seamline and again $\frac{1}{4}$ " (6mm) away. In seam allowance, using long machine stitches. Pull thread ends when adjusting to fit.

> **UNDERSTITCH**

Open out facing or underside of garment; stitch to seam allowance close to seam.

> **NARROW HEM**

Turn in hem; press, easing in fullness if necessary. Open out hem. Turn in again so raw edge is along crease; press. Turn in along crease; stitch.

> **SLIPSTITCH**

Slide needle through a folded edge, then pick up a thread of underneath fabric.

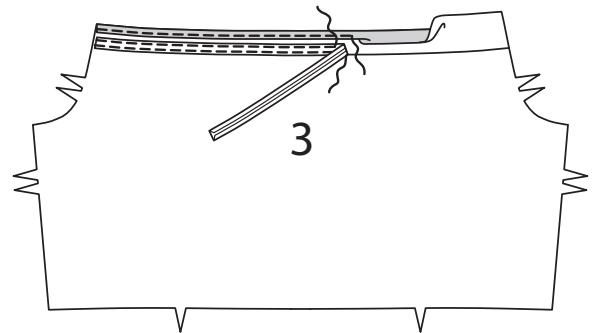
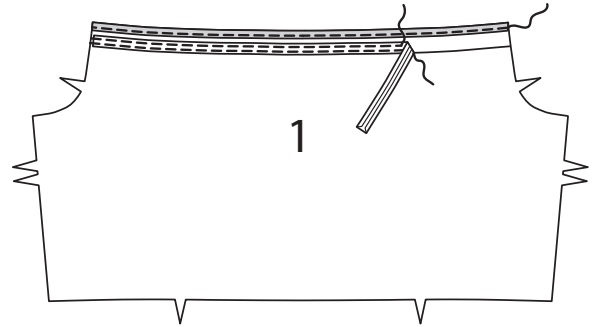
> **STAYSTITCH**

Stitch $\frac{1}{8}$ " (3mm) from seamline in seam allowance (usually $\frac{1}{2}$ " (13mm) from raw edge).

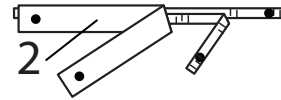
DRESS A, B

Bodice

- 1 Make $\frac{5}{8}$ " (1.5cm) **NARROW HEM** on upper edge of BODICE FRONT (1) and BODICE BACK (3). To form casings for elastic, on inside, pin lower edge of bias tape along placement lines, having raw edges even. Stitch close to both long edges.

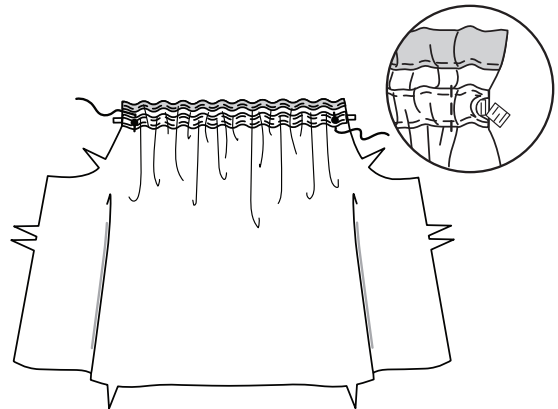


- 2 Cut two pieces of elastic each the length of GUIDE FOR ELASTIC (2). Transfer markings.

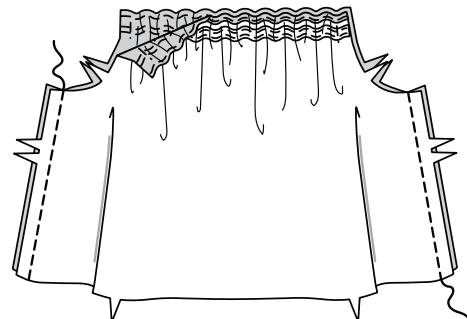


- 3 Insert elastic through bodice front and bodice back casings. Stitch close to ends of casing, catching in elastic.

To reduce bulk, trim ends of elastic, being careful not to cut front or back.

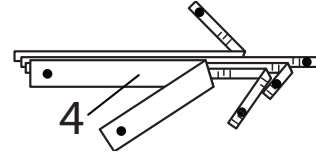


- 4 Stitch bodice back to bodice front at sides.



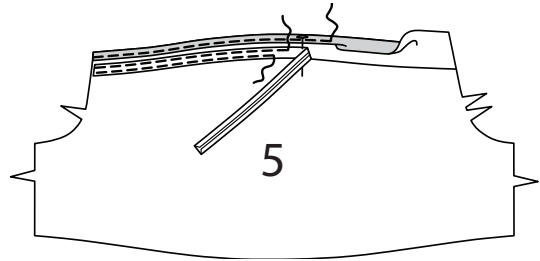
Sleeve

- 5** For sleeves, cut four pieces of elastic, each the length of GUIDE FOR ELASTIC (4). Transfer markings.



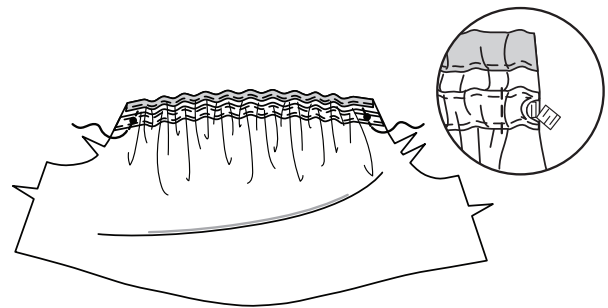
View A:

- 6** Make $\frac{5}{8}$ " (1.5cm) **NARROW HEM** on upper edge of SLEEVE (5). Pin bias tape to sleeve, placing lower edge along upper placement line. Stitch close to both long edges, leaving ends open.

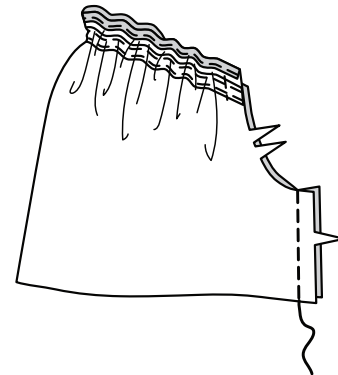


- 7** Insert elastic through opening in casing, having ends even with raw edges. Stitch across ends.

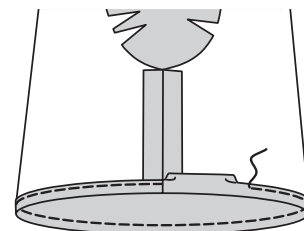
To reduce bulk, trim ends of elastic, being careful not to cut sleeve.



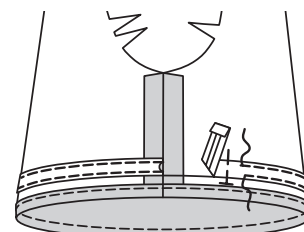
- 8** Stitch sleeve seam.



- 9** Make $\frac{5}{8}$ " (1.5cm) **NARROW HEM** on lower edge of sleeve.

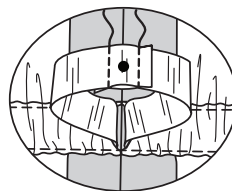


- 10** To form remaining casing, on inside, pin lower edge of bias tape along placement line, turning under ends at seam. Stitch close to

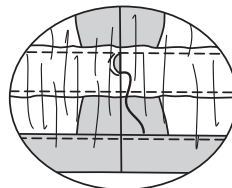


both long edges.

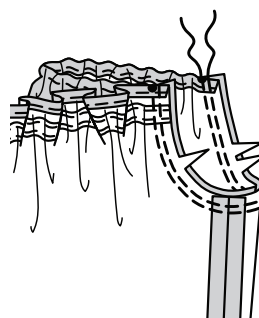
- 11** Insert elastic through opening in lower casing. Lap ends, matching small circles. Stitch ends of elastic securely.



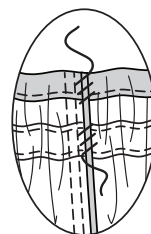
- 12** **SLIPSTITCH** opening closed.



- 13** With right sides together, pin sleeve to armhole edge, matching small circles; baste. Stitch. Stitch again $\frac{1}{4}$ " (6mm) away in seam allowance. Trim close to stitching below notches. Press seam allowances flat. Turn seam toward sleeve.

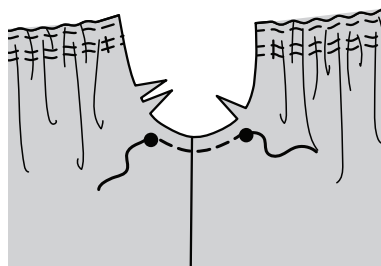


- 14** Tack upper edge of seam allowances as shown.

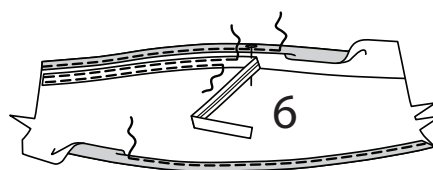


View B:

- 15** To prevent stretching, **STAYSTITCH** armhole between large circles, as shown.



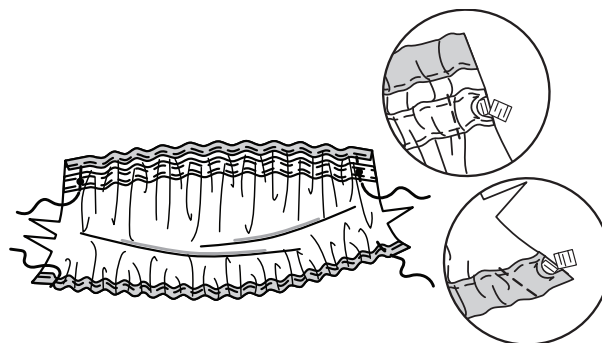
- 16** Make $\frac{5}{8}$ " (1.5) **NARROW HEM** on upper edge of SLEEVE (6). Pin bias tape to sleeve, placing lower edge along placement line. Stitch close to both long edges, leaving ends open. To form casing at lower edge, turn in $\frac{5}{8}$ " (1.5cm)



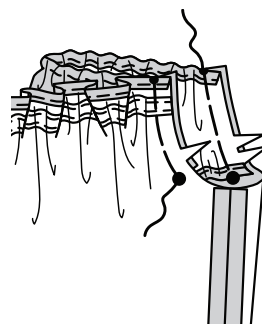
on raw edge, turning in $\frac{1}{4}$ " (6mm); press. Stitch.

- 17** Insert elastic through opening in upper and lower casing, having ends even with raw edges. Stitch across ends.

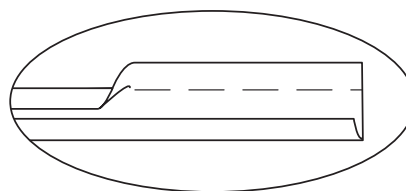
To reduce bulk, trim ends of elastic, being careful not to cut sleeve.



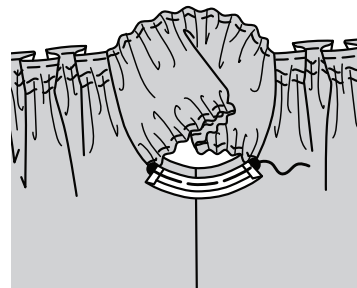
- 18** With right sides together, pin sleeve to armhole edge, matching small and large circles. Baste.



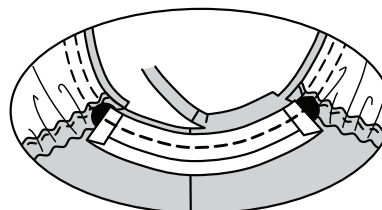
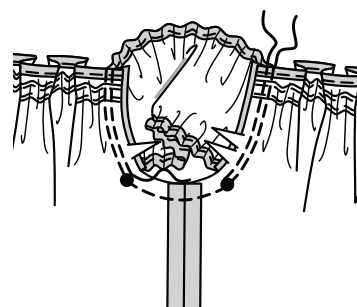
- 19** Open out one folded edge of bias tape. Press lightly.



- 20** On outside, pin bias tape to armhole below large circles, placing crease along seamline, turning back ends at large circles, as shown. Baste.



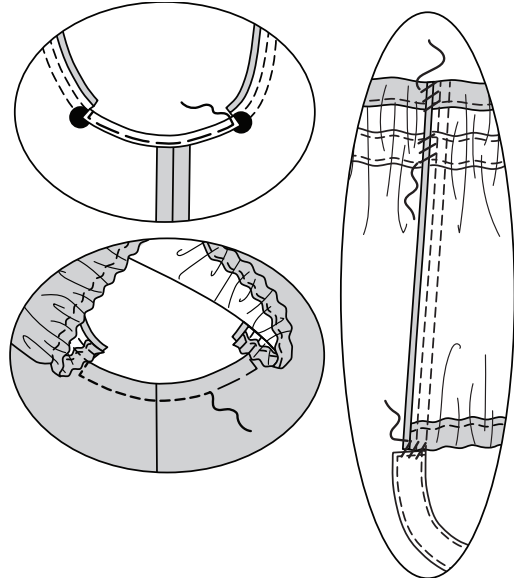
- 21** Stitch entire armhole edge along seamline. Stitch again $\frac{1}{4}$ " (6mm) away in seam allowance above large circles, as shown. Trim underarm seam allowance even with bias tape. Trim seam allowance close to second stitching



Press seam allowances toward garment.

- 22** Turn bias tape to inside along seam. Press. Baste close to pressed edges and turned under ends. On outside, stitch along basting, pivoting stitching, as shown.

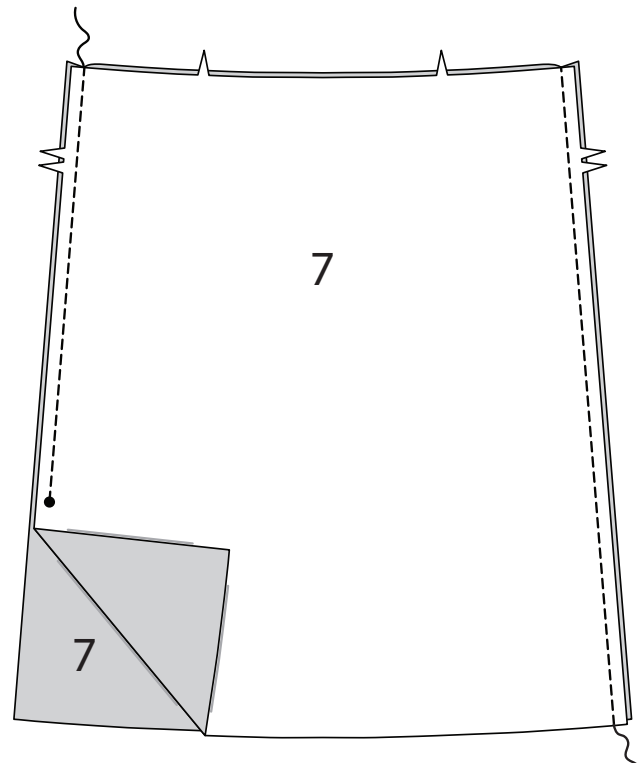
Tack armhole seam allowances, as shown.



Skirt

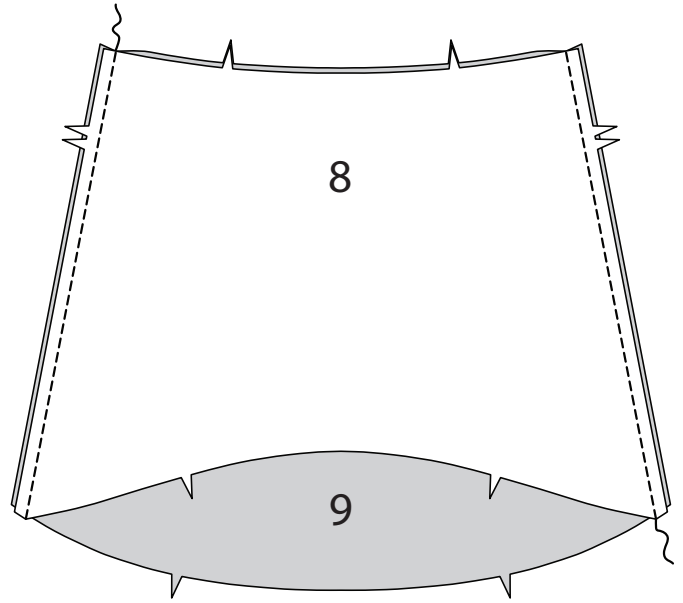
View A:

- 23** Stitch SKIRT FRONT AND BACK (7) sections at sides, stitching left side seam above large circle.

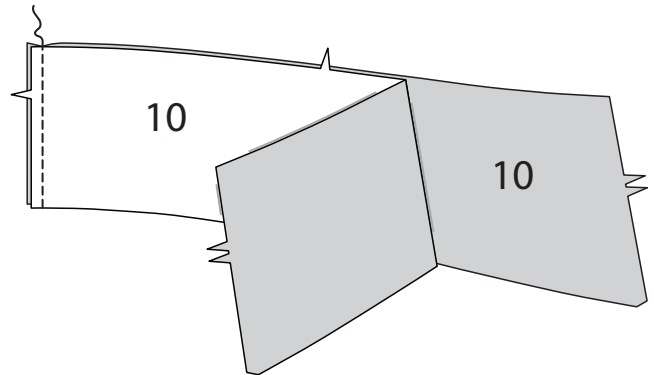


View B

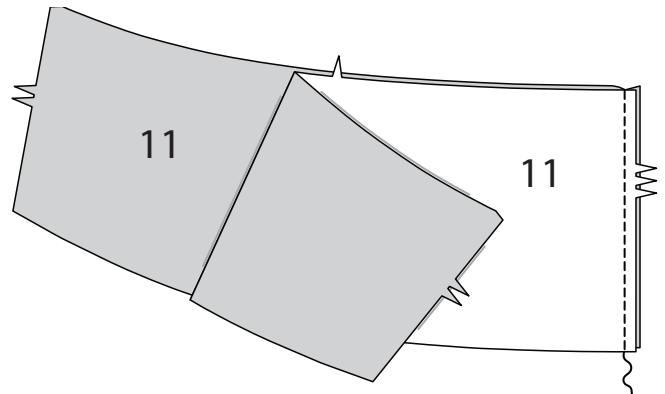
- 24** Stitch SKIRT FRONT (8) to SKIRT BACK (9) at sides.



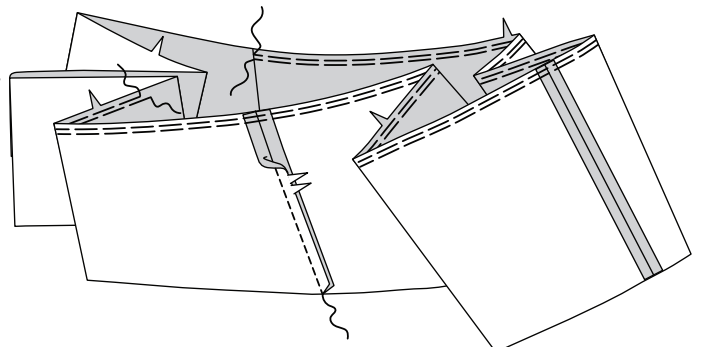
- 25** Stitch center front edges of FRONT RUFFLE (10) sections together.



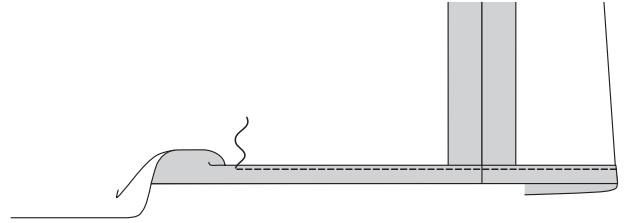
- 26** Stitch center back edges of BACK RUFFLE (11) sections together, matching triple notches.



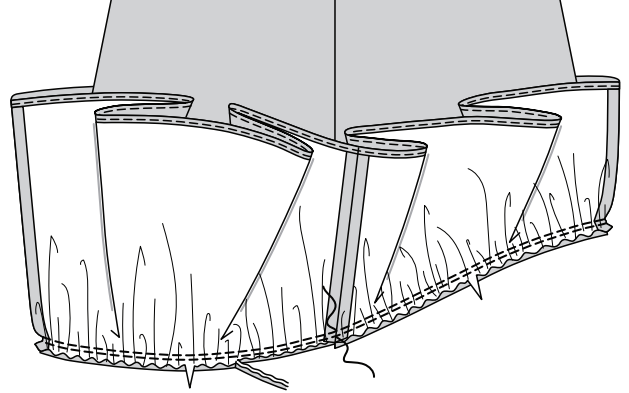
- 27** Stitch back ruffle to front ruffle at sides.
GATHER upper edge of ruffle between seams.



- 28** Make $\frac{5}{8}$ " (1.5cm) **NARROW HEM** on lower edge of ruffle.

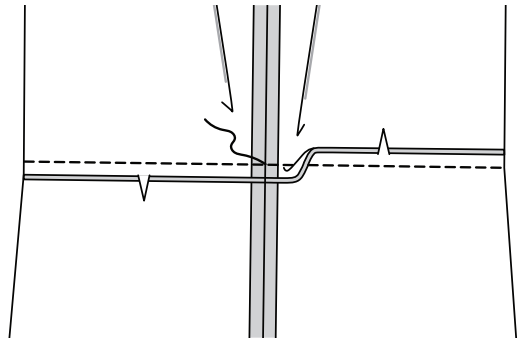


- 29** With right sides together, pin ruffle to lower edge of skirt, matching side seams, centers front and back. Adjust gathers to fit; baste. Stitch. Stitch again $\frac{1}{4}$ " (6mm) away in seam allowance. Trim close to stitching. Press seam up.

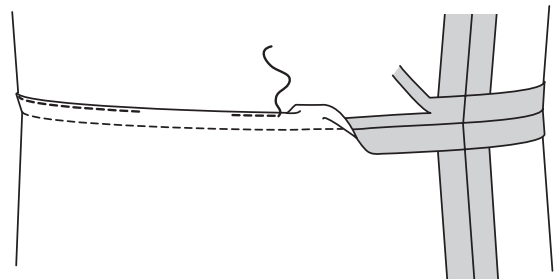


Views A,B:

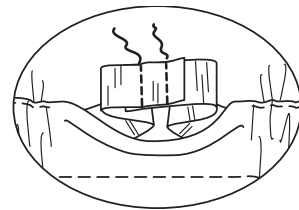
- 30** Pin skirt to lower edge of bodice, matching centers and side seams. Stitch.



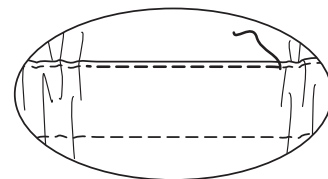
- 31** Trim bodice seam allowance to a scant $\frac{1}{4}$ " (6mm). To form casing, press seam allowances up, turning in $\frac{1}{4}$ " (6mm) on raw edge. Stitch through all thicknesses, leaving an opening to insert elastic.



- 32** Cut elastic a comfortable waist measurement plus 1" (2.5cm). Insert elastic through opening. Lap ends; hold with safety pin. Try on and adjust, if necessary. Stitch ends of elastic securely.

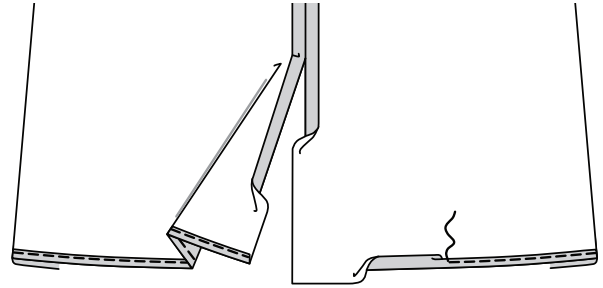


- 33** Stitch opening closed, stretching elastic while stitching.

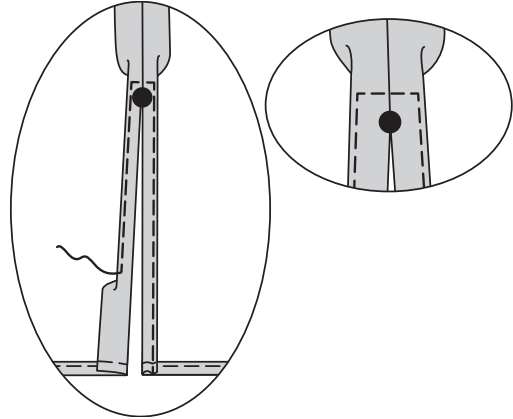


View A:

- 34** Make $\frac{5}{8}$ " (1.5cm) **NARROW HEM** on lower edge of dress.

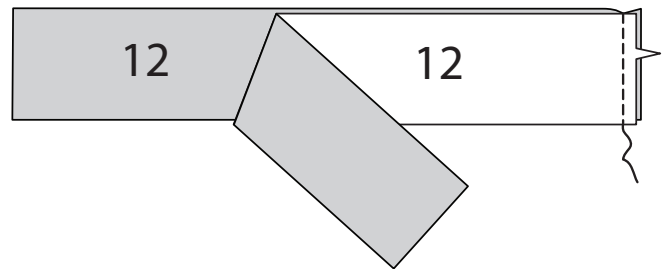


- 35** Make $\frac{5}{8}$ " (1.5cm) **NARROW HEM** at side opening edges, tapering to nothing above large circle. Pivot across seam allowance $\frac{1}{4}$ " (6mm) above large circle, when stitching.

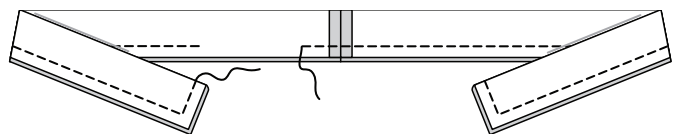


SASH A

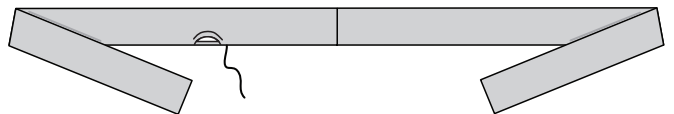
- 36** Stitch SASH (12) sections together along notched edge.



- 37** With right sides together, fold sash along foldline. Stitch, leaving an opening. Trim seam.



- 38** Turn sash. Press. **SLIPSTITCH** opening closed.





CONGRATS!


You've completed your sewing adventure!

SHARE YOUR look!



Post your pattern and tag us at
@MCCALLPATTERNCOMPANY and use
#BUTTERICK for a chance to be featured
on our social media!

Look for more Butterick PDF patterns at **BUTTERICK.COM**

 1-800-255-2762

Copyright © 2020 CSS Industries, Inc. All Rights Reserved.
Sold for individual home use only and not for commercial or manufacturing purposes.