



PDF PATTERNS

B6332

>> MISSES'
JACKET,
DRESS, SKIRT
AND PANTS

02

FABRIC &
SIZE CHARTS

05

CUTTING
LAYOUTS

09

PATTERN
MARKINGS

10

GLOSSARY

11

SEWING
INSTRUCTIONS

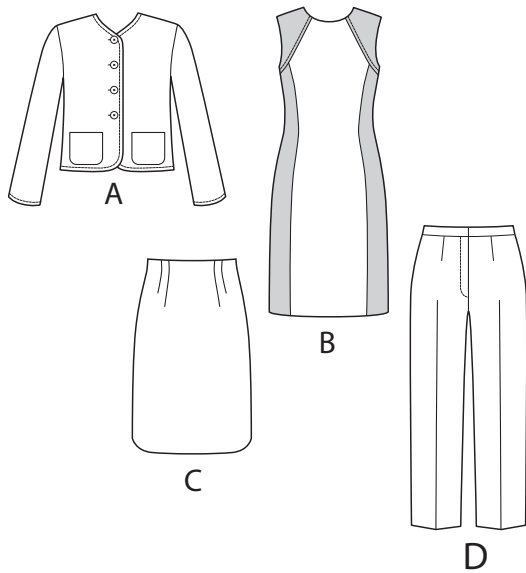


Lifestyle
W A R D R O B E

Butterick®

SKILL LEVEL: EASY

FIND THE PERFECT FIT!



THINGS YOU NEED:

- > A: Four 7/8" Buttons.
Optional: Covered Shoulder Pads.
- > B: 22" Zipper, Hook and Eye.
- > C: 9" Zipper, Hook and Eye.
- > D: 7" Zipper, Waistband Hook and Eye.

SUGGESTED FABRICS:

- > Linen, Broadcloth, Crepes, Gabardine.
Unsuitable for obvious diagonals.
- *With Nap. **Without Nap.

CHARTS

YARDAGE CHARTS

SIZES	8	10	12	14	16	18	20	22	24	
VIEW A										
45*/**	2	2 1/8	2 1/8	2 1/8	2 1/4	2 1/4	2 1/4	2 1/4	2 3/8	yds.
60*/**	1 1/2	1 1/2	1 1/2	1 1/2	1 5/8	1 5/8	1 7/8	1 7/8	1 7/8	yds.
FUSIBLE INTERFACING A - 18, 20 - 7/8 yd.										
LINING A										
45	1 5/8	1 3/4	1 7/8	1 7/8	1 7/8	1 7/8	2	2 1/8	2 1/4	yds.
VIEW B										
45, 60*/**	1 3/8	1 3/8	1 3/8	1 3/8	1 3/8	1 3/8	1 3/8	1 3/8	1 3/8	yds.
CONTRAST B										
45*/**	1	1	1	1	1	1 1/2	1 1/2	1 1/2	1 1/2	yds.
60*/**	1	1	1	1	1	1	1	1	1	yds.
LINING B										
45	2 1/8	2 1/8	2 1/8	2 1/8	2 1/8	2 1/8	2 1/4	2 1/4	2 1/4	yds.
VIEW C										
45*/**	1 1/8	1 1/8	1 1/2	1 1/2	1 1/2	1 1/2	1 1/2	1 1/2	1 1/2	yds.
60*/**	1 1/8	1 1/8	1 1/8	1 1/8	1 1/8	1 1/8	1 1/8	1 1/8	1 1/8	yds.

SIZES	8	10	12	14	16	18	20	22	24	
FUSIBLE INTERFACING C - 18, 20 - 1 yd.										
VIEW D										
45*/**	2	2	2¼	2¼	2¼	2¼	2¼	2¼	2¼	yds.
60*/**	1½	1⅝	1⅝	1⅝	2	2	2	2	2	yds.
FUSIBLE INTERFACING D										
18, 20	1	1	1	1⅛	1⅛	1¼	1¼	1⅜	1⅜	yds.

FINISHED GARMENT MEASUREMENTS

SIZES	8	10	12	14	16	18	20	22	24	
MEASUREMENT AT BUSTLINE										
VIEW A	36½	37½	39	41	43	45	47	49	51	in.
VIEW B	34	35	36½	38½	40½	42½	44½	46½	48½	in.
MEASUREMENT AT HIPLINE										
VIEW C, D	37	38	39½	41½	43½	45½	47½	49½	51½	in.
WIDTH, LOWER EDGE										
VIEW A	41	42	43½	45½	47½	49½	51½	53½	55½	in.
VIEW B, C	37	38	39½	41½	43½	45½	47½	49½	51½	in.
WIDTH, EACH LEG										
VIEW D	13½	14	14½	15	15½	16	16½	17	17½	in.
BACK LENGTH FROM BASE OF NECK										
VIEW A	19¾	20	20¼	20½	20¾	21	21¼	21½	21¾	in.
VIEW B	36¾	37	37¼	37½	37¾	38	38¼	38½	38¾	in.
BACK LENGTH FROM WAIST										
VIEW C	21	21	21	21	21	21	21	21	21	in.
SIDE LENGTH FROM WAIST										
VIEW D	35	35	35	35	35	35	35	35	35	in.

BODY MEASUREMENTS

SIZES	8	10	12	14	16	18	20	22	24	
BUST	31½	32½	34	36	38	40	42	44	46	in.
WAIST	24	25	26½	28	30	32	34	37	39	in.
HIP	33½	34½	36	38	40	42	44	46	48	in.
BACK WAIST LENGTH	15¾	16	16¼	16½	16¾	17	17¼	17½	17¾	in.

Your printed tile pieces should be assembled before you move on to this step!

PIECES (20)

JACKET A

- 1 FRONT
- 2 POCKET
- 3 BACK
- 4 FRONT FACING
- 5 SLEEVE
- 6 GUIDE FOR BUTTONHOLES

DRESS B

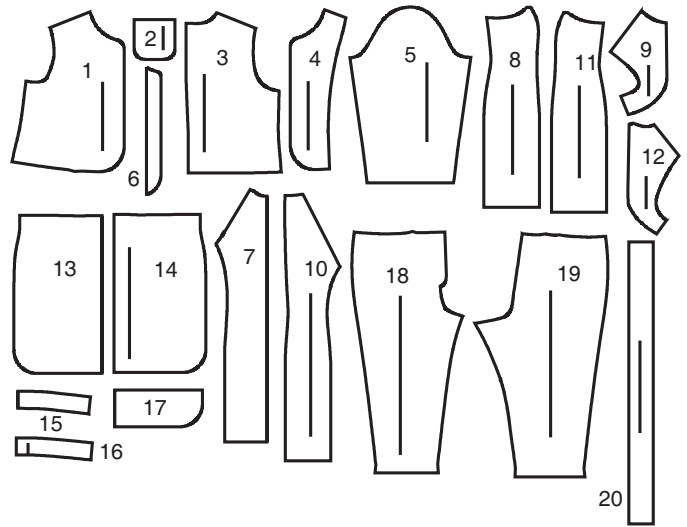
- 7 FRONT
- 8 SIDE FRONT
- 9 YOKE FRONT
- 10 BACK
- 11 SIDE BACK
- 12 YOKE BACK

SKIRT C

- 13 FRONT
- 14 BACK
- 15 FRONT FACING
- 16 BACK FACING
- 17 HEM FACING

PANTS D

- 18 FRONT
- 19 BACK
- 20 WAISTBAND

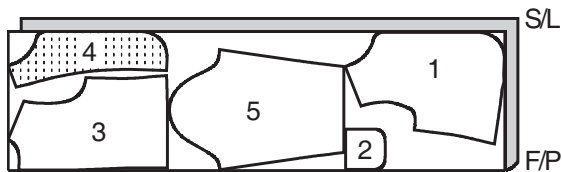


1 JACKET A

PIECES: 1, 2, 3, 4 & 5

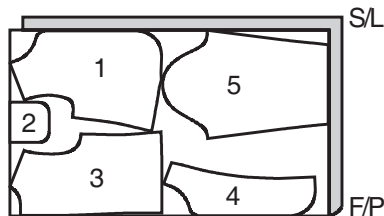
45" (115 cm)

ALL SIZES



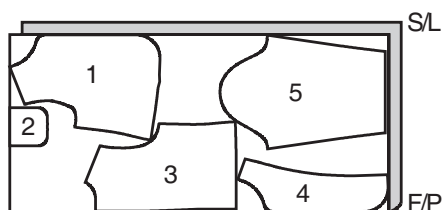
60" (150 cm)

SIZES: 8-10-12-14-16-18



60" (150 cm)

SIZES: 20-22-24

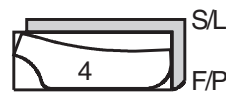


2 FUSIBLE INTERFACING A

PIECE: 4

18", 20" (46, 51 cm)

ALL SIZES

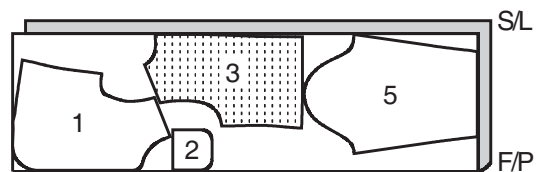


3 LINING A

PIECES: 1, 2, 3 & 5

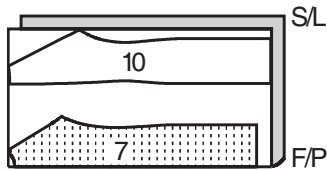
45" (115 cm)

ALL SIZES

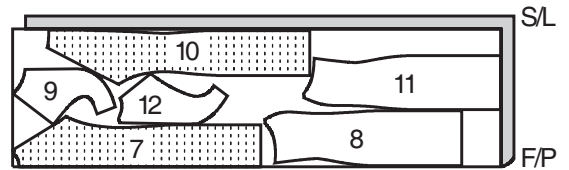


4 DRESS B

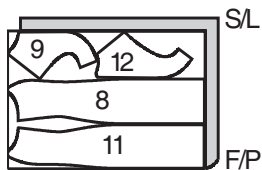
PIECES: 7 & 10
 45", 60" (115, 150 cm)
 ALL SIZES

**6 LINING B**

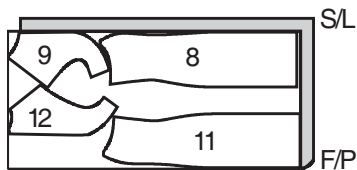
PIECES: 7, 8, 9, 10, 11 & 12
 45" (115 cm)
 ALL SIZES

**5 CONTRAST B**

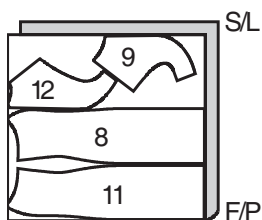
(SIDES & YOKE)
 PIECES: 8, 9, 11 & 12
 45" (115 cm)
 SIZES: 8-10-12-14-16



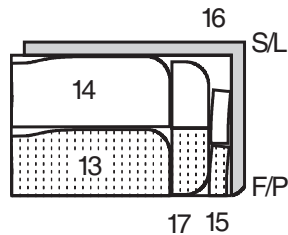
45" (115 cm)
 SIZES: 18-20-22-24



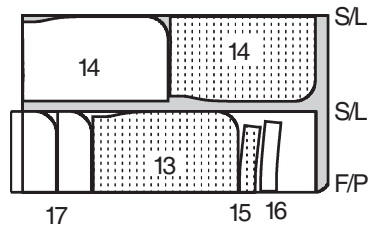
60" (150 cm)
 ALL SIZES

**7 SKIRT C**

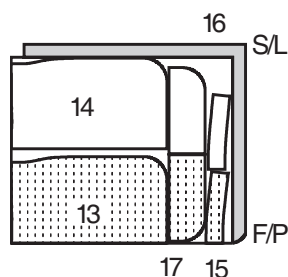
PIECES: 13, 14, 15, 16 & 17
 45" (115 cm)
 SIZES: 8-10



45" (115 cm)
 SIZES: 12-14-16-18-20-22-24



60" (150 cm)
 ALL SIZES



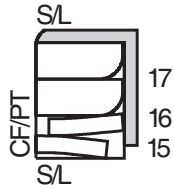
8

FUSIBLE INTERFACING C

PIECES: 15, 16 & 17

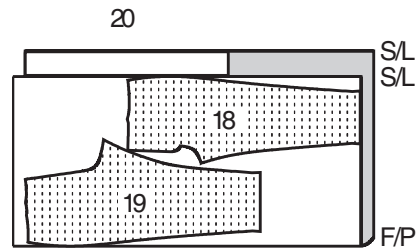
18", 20" (46, 51 cm)

ALL SIZES



60" (150 cm)

SIZES: 8-10-12-14



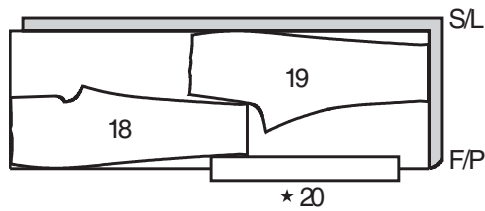
9

PANTS D

PIECES: 18, 19 & 20

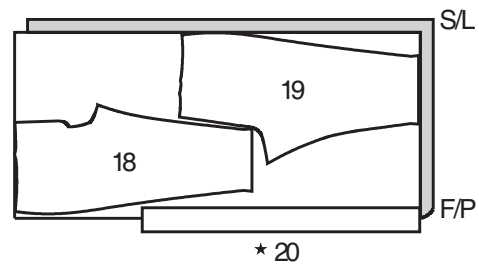
45" (115 cm)

SIZES: 8-10



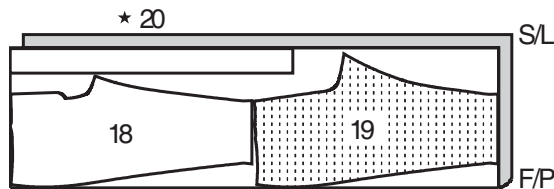
60" (150 cm)

SIZES: 16-18-20-22-24



45" (115 cm)

SIZES: 12-14-16-18-20-22-24



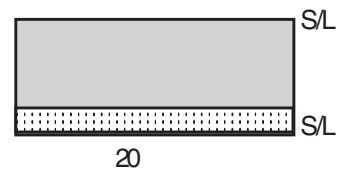
10

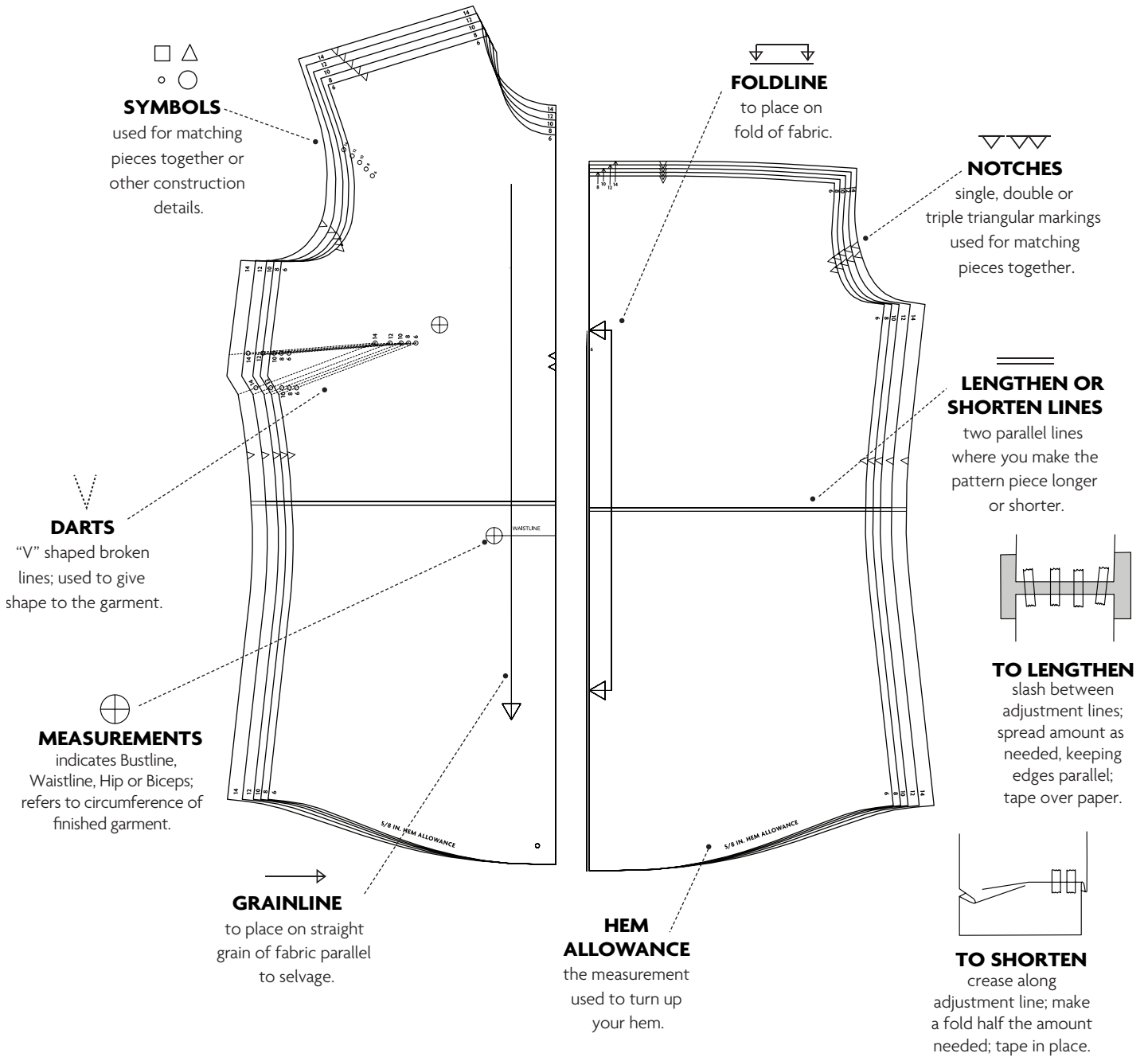
FUSIBLE INTERFACING D

PIECE: 20

18", 20" (46, 51 cm)

ALL SIZES





The following terms appear in **BOLD TYPE** throughout your sewing instructions!

> **BLINDSTITCH**

Turn edge down about ¼" (6mm); make a small diagonal stitch by picking up one thread of garment, then one thread of hem or facing.

> **EASESTITCH**

Stitch along seamline, using long machine stitches. Pull thread ends when adjusting to fit.

NOTE: For sleeve caps, make a second row of long machine stitches ¼" (6mm) away in seam allowance for more control.

> **EDGESTITCH**

Stitch close to finished edge or seam.

> **FINISH**

Stitch ¼" (6mm) from raw edge and finish with one of the following: (1) Pink OR (2) Overcast OR (3) Turn in along stitching and stitch close to fold OR (4) Overlock.

OPTIONAL FOR HEMS: Apply Seam Binding.

> **SLIPSTITCH**

Slide needle through a folded edge, then pick up a thread of underneath fabric.

> **STAYSTITCH**

Stitch ⅛" (3mm) from seamline in seam allowance (usually ½" (13mm) from raw edge).

> **TOPSTITCH**

On outside, stitch ¼" (6mm) from edge, seam or previous stitching, using presser foot as guide, or stitch where indicated in instructions.

> **UNDERSTITCH**

Open out facing or underside of garment; stitch to seam allowance close to seam.

FABRIC KEY

RIGHT SIDE
FABRICWRONG SIDE
FABRIC

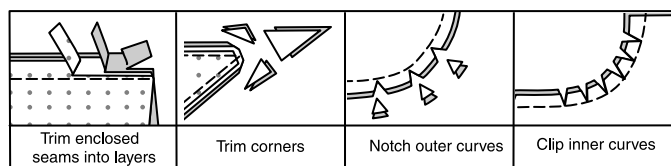
INTERFACING

RIGHT
SIDE LININGWRONG
SIDE LINING

PATTERN PIECES WILL BE
IDENTIFIED BY NUMBERS THE
FIRST TIME THEY ARE USED.

SEAM ALLOWANCES:

- > Use $\frac{5}{8}$ " (1.5cm) seam allowances unless otherwise indicated.
- > Pin or baste seams, right side together, matching notches. Fit garment before stitching major seams.
- > Press seam allowances flat; then open unless otherwise stated. Clip where necessary so they lie flat.



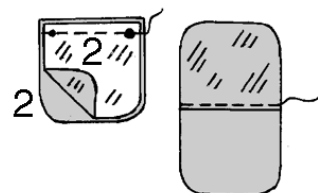
JACKET A

FRONT, POCKETS AND BACK

- 1 Stitch dart in FRONT (1).
Trim dart to $\frac{5}{8}$ " (1.5cm); press open.



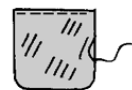
- 2 Stitch POCKET (2) and pocket LINING together along upper edge, as shown. **UNDERSTITCH** pocket lining.



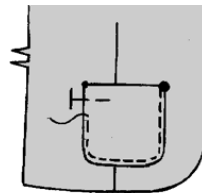
- 3 Turn pocket lining to outside along seam. Stitch side and lower edges, leaving an opening. Trim.



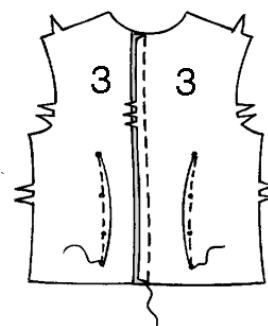
- 4** Turn pocket lining to inside; press.
SLIPSTITCH opening.



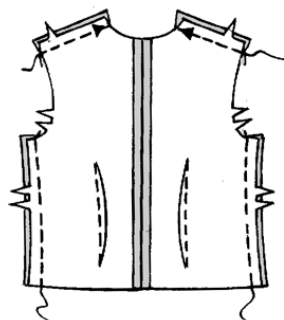
- 5** Pin pocket to front, matching symbols.
EDGESTITCH side and lower edges in place.



- 6** Stitch dart in BACK (3); press toward center.
Stitch back sections together at center back.

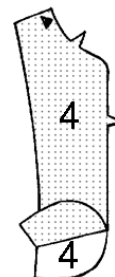


- 7** Stitch back and front sections together at shoulders and sides.

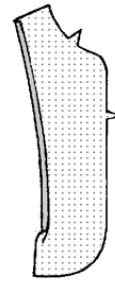


FACING AND LINING

- 8** Fuse INTERFACING to wrong side of FRONT FACING (4), following manufacturer's instructions.



- 9** Turn in $\frac{1}{4}$ " (6mm) on long unnotched edge of front facing; press.



- 10** Stitch dart in front LINING.
Trim dart to $\frac{5}{8}$ " (1.5cm); press open.



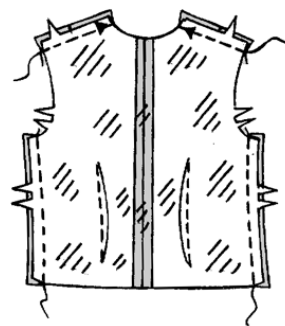
- 11** Pin wrong side of front facing to right side of front lining, having raw edges even.
Baste along seamlines. Baste inner pressed edge of facing in place. **EDGESTITCH**, as shown.



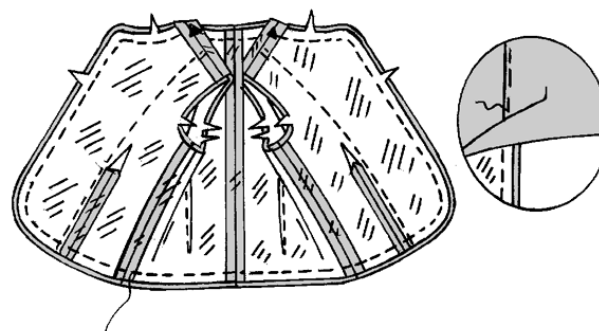
- 12** Stitch dart in back LINING; press toward center.
Stitch back lining sections together at center back.



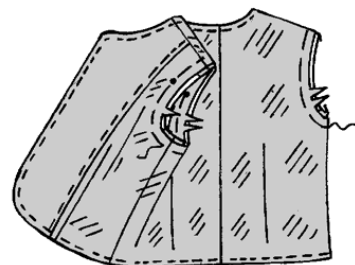
- 13** Stitch back lining and front lining sections together at shoulders and sides.



- 14** With right sides together, pin lining to jacket. Stitch along front opening, neck and lower edges. Trim. **UNDERSTITCH** lining as far as possible.



- 15** Turn lining to inside through one armhole opening; press. Baste raw edges together.



SLEEVE

- 16** **EASESTITCH** upper edge of SLEEVE (5) between notches.



- 17** Stitch sleeve seam.



Prepare sleeve LINING in same manner as sleeve.

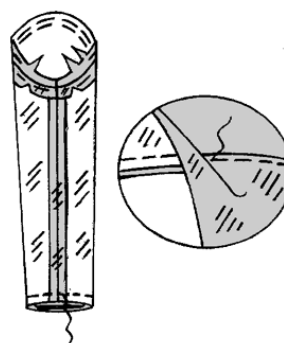
- 18** **STAYSTITCH** upper edge of sleeve lining below notches.



- 19** Turn in seam allowance on upper edge of sleeve lining, clipping where necessary. Baste.



- 20** With right sides together, pin sleeve lining to sleeve at lower edge. Stitch. Trim.
UNDERSTITCH sleeve lining.



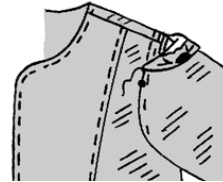
- 21** Turn sleeve lining to inside along seam. Press.



- 22** With right sides together, pin sleeve into armhole, placing large circle at shoulder seam. Adjust ease; baste. Stitch, keeping lining free. Stitch again $\frac{1}{4}$ " (6mm) away in seam allowances. Trim close to second stitching. Press seam allowances flat. Turn seam toward sleeve.



- 23** Pin sleeve lining to jacket, placing large circle at shoulder and pressed edge over armhole seam. Adjust ease; **SLIPSTITCH** in place.



FINISHING

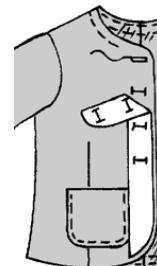
- 24** **TOPSTITCH** jacket along front opening, neck and lower edges.



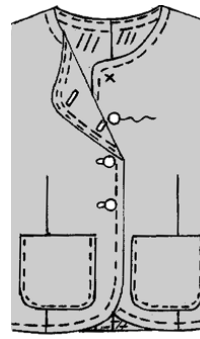
- 25** **TOPSTITCH** lower edge of sleeve.



- 26** Place GUIDE FOR BUTTONHOLES (6) on right front, having edges of tissue even with finished edges of jacket, as shown. Transfer markings. Make buttonholes at markings.

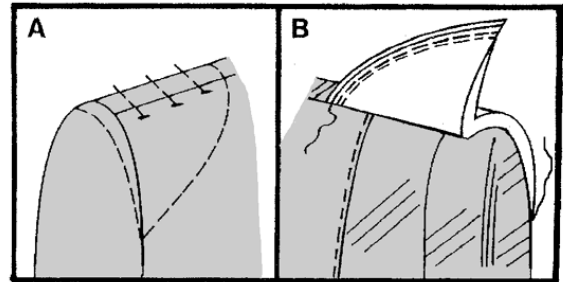


- 27** Lap opening edges, matching centers.
Using buttonholes as guides, make button markings on left front.
Sew buttons at markings.



OPTIONAL:

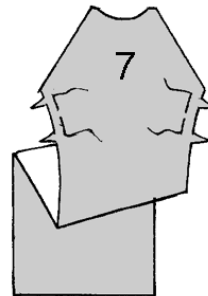
- 28** (A) Try on jacket for shoulder pad placement.
Pin pad to jacket, extending outer edge about $\frac{5}{8}$ " (1.5cm) beyond armhole seam.
(B) Sew pad to shoulder seam; tack ends to armhole seam.



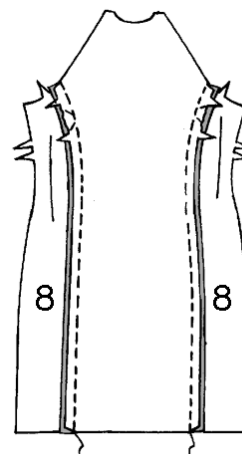
DRESS B

FRONT, BACK AND ZIPPER

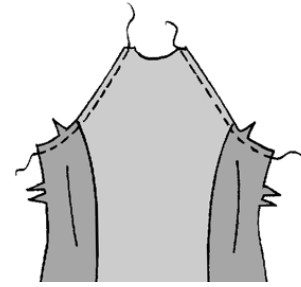
- 1** **EASESTITCH** side edges of FRONT (7) between notches.



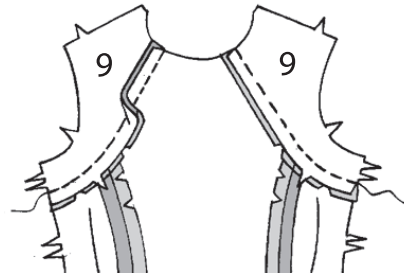
- 2** Pin SIDE FRONT (8) sections to side edges of front. Adjust ease; baste. Stitch.



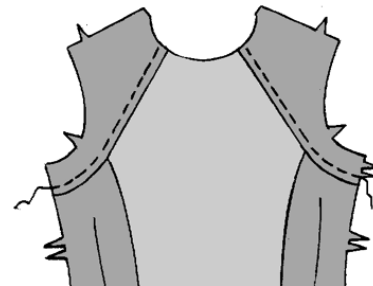
- 3 STAYSTITCH** upper side edges of front, as shown.



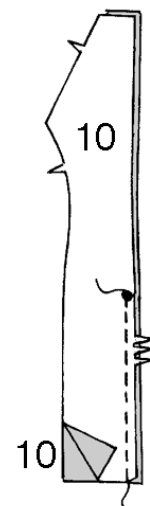
- 4** Pin YOKE FRONT (9) sections to upper side edges of front, clipping front where necessary; baste. Stitch. Trim. Press seams toward yoke.



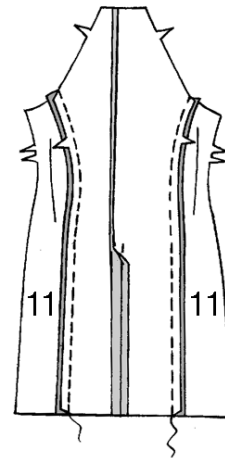
- 5 TOPSTITCH** yoke along seams, as shown.



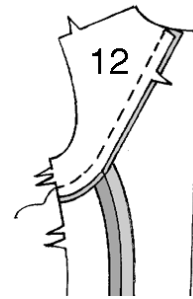
- 6** Stitch BACK (10) sections together at center back, leaving open above large circle.



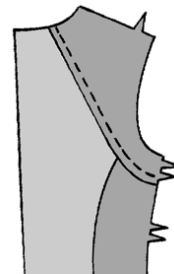
- 7** Stitch SIDE BACK (11) sections to side edges of back.



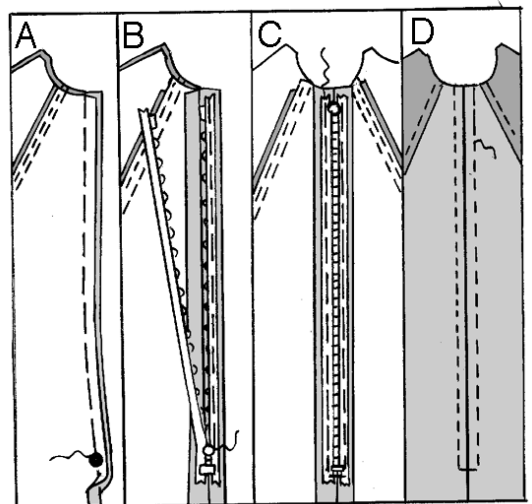
- 8** Stitch YOKE BACK (12) sections to upper side edges of back. Trim. Press seams toward yoke.



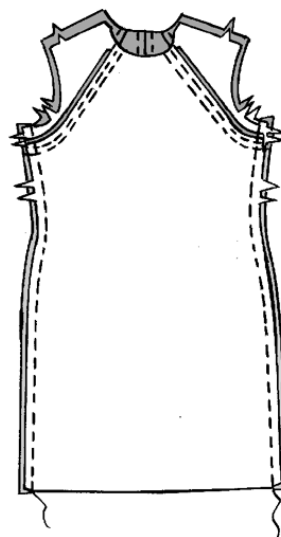
- 9** **TOPSTITCH** yoke along seams.



- 10** (A) Baste back opening edges together along seamline above large circle, as shown. Press.
- (B) Open zipper; place face down on extended seam allowance, placing zipper stop at large circle and zipper teeth on seamline. Baste in center of zipper tape, keeping back free.
- (C) Close zipper; turn pull tab up. Spread back flat. Baste a scant $\frac{1}{4}$ " (6mm) from zipper teeth and across lower edge.
- (D) On outside, stitch along basting through all thicknesses, as shown, using a zipper foot. Remove basting.

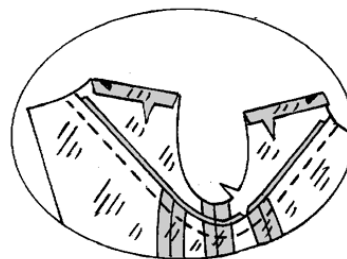


- 11** Stitch back and front together at sides.

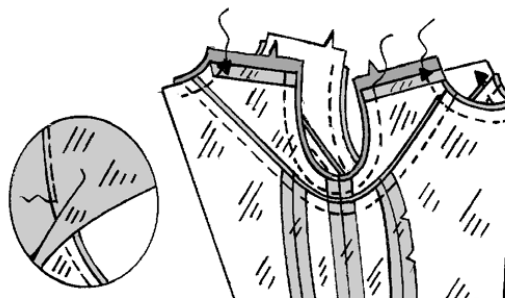


LINING AND FINISHING

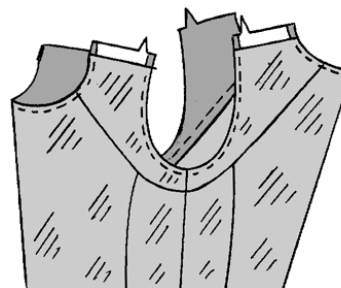
- 12** Prepare LINING sections in same manner as dress, disregarding reference to topstitching and zipper. Turn in shoulder edges of lining; press.



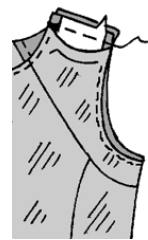
- 13** Pin lining to dress. Stitch neck and armhole edges. Trim. **UNDERSTITCH** lining as far as possible.



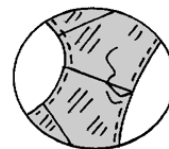
- 14** Turn lining to inside, press.



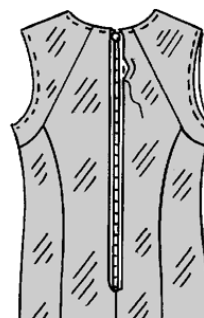
- 15** Stitch front and back at shoulders, keeping lining free.



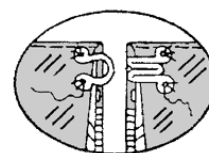
- 16** **SLIPSTITCH** pressed edges of lining together.



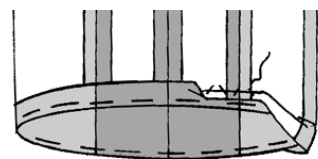
- 17** Turn in back opening edges of lining to clear zipper teeth; press. **SLIPSTITCH** to zipper tape.



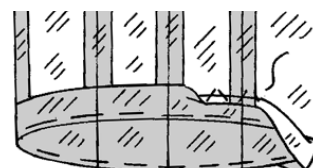
- 18** Sew hook and eye to back opening edges above zipper, as shown.



- 19** Turn up 1¼" (3.2cm) hem, keeping lining free. Baste close to fold. **FINISH** raw edge. Sew hem in place. Press.



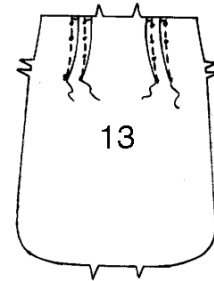
- 20** Turn up 2" (5cm) lining hem, keeping dress free. Baste close to fold. **FINISH** raw edge. Sew hem in place. Press.



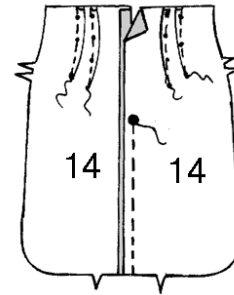
SKIRT C

FRONT, BACK AND ZIPPER

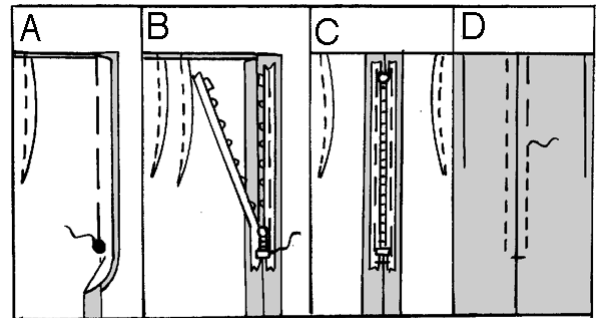
- 1** Stitch darts in FRONT (13). Press toward center.



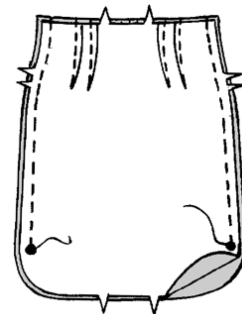
- 2** Stitch darts in BACK (14). Press toward center.
Stitch back sections together at center back, leaving open above large circle.



- 3** (A) Baste back opening edges together along seamline above large circle, as shown. Press.
(B) Open zipper; place face down on extended seam allowance, placing zipper stop at large circle and zipper teeth on seamline. Baste in center of zipper tape, keeping back free.
(C) Close zipper; turn pull tab up. Spread back flat. Baste a scant ¼" (6mm) from zipper teeth and across lower edge.
(D) On outside, stitch along basting through all thicknesses, as shown, using a zipper foot. Remove basting.

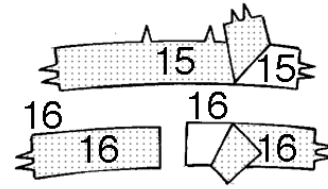


- 4** Stitch back and front together at sides, ending at large circles.

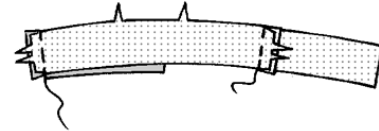


FACINGS AND FINISHING

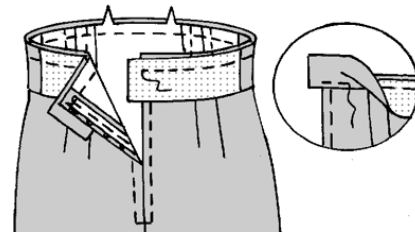
- 5** Fuse INTERFACING to wrong side of FRONT FACING (15) and BACK FACING (16) sections, following manufacturer's instructions.



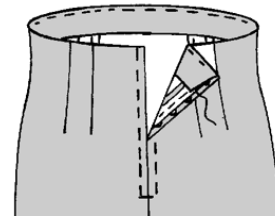
- 6** Stitch front facing and back facing sections together at sides. **FINISH** long unnotched edge.



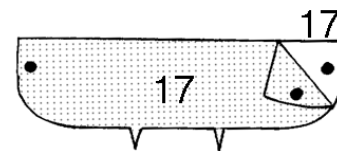
- 7** Pin facing to upper edge of skirt. Stitch. Trim. **UNDERSTITCH** facing.



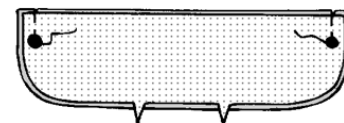
- 8** Turn facing to inside, turning in ends to clear zipper teeth; press. **SLIPSTITCH** to zipper tape. Tack at seams and darts.



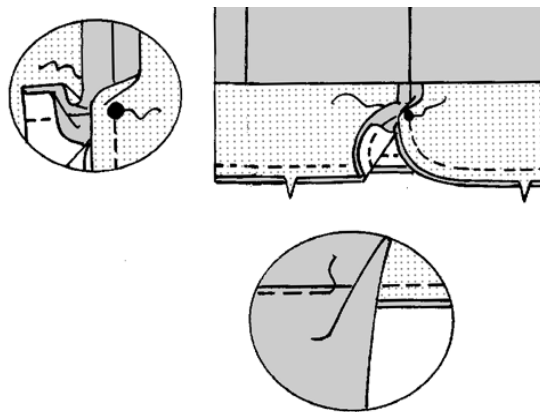
- 9** Fuse INTERFACING to wrong side of each HEM FACING (17) section, following manufacturer's instructions.



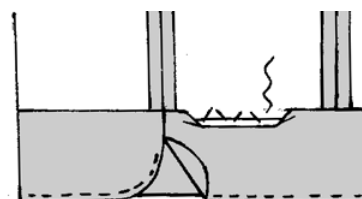
- 10** Stitch hem facing sections together at sides above large circles, as shown. **FINISH** long unnotched edge.



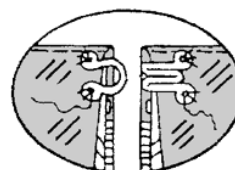
- 11** Pin hem facing to lower edge of skirt, matching centers and seams. Stitch, breaking stitching at large circles. Trim. **UNDERSTITCH** facing as far as possible.



- 12** Turn facing to inside; press. **BLINDSTITCH** inner edge in place.



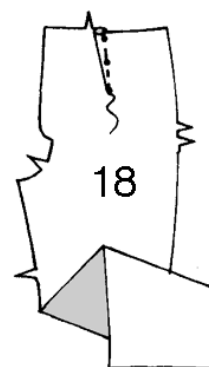
- 13** Sew hook and eye to back opening edges above zipper, as shown.



PANTS D

FRONT AND ZIPPER

- 1** Stitch dart in FRONT (18). Press toward center.



2

(A) Stitch front sections together at center front between square and notch. Machine baste above square.

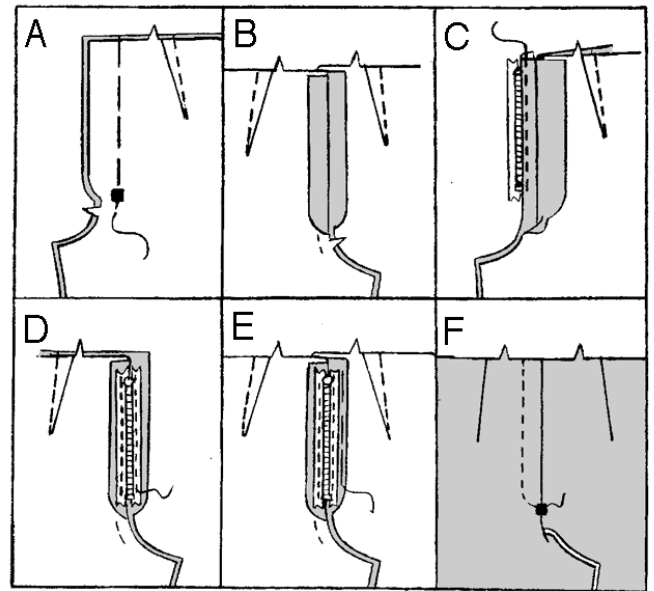
(B) Turn left front extension to inside along foldline, as shown. Press.

(C) Place closed zipper (face up) under left front extension, placing zipper stop at large circle and zipper teeth close to pressed edge. Using a zipper foot, stitch close to edge.

(D) Pin remaining zipper tape to right front extension. Stitch, keeping front free.

(E) Turn right front extension toward front. Baste in place.

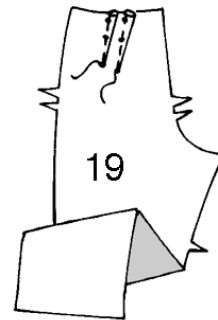
(F) On outside, stitch right front along stitching line.



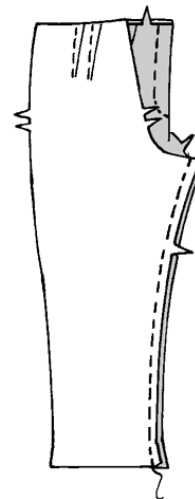
BACK AND SEAMS

3

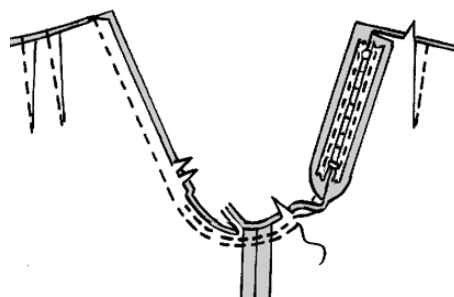
Stitch darts in BACK (19). Press toward center.

**4**

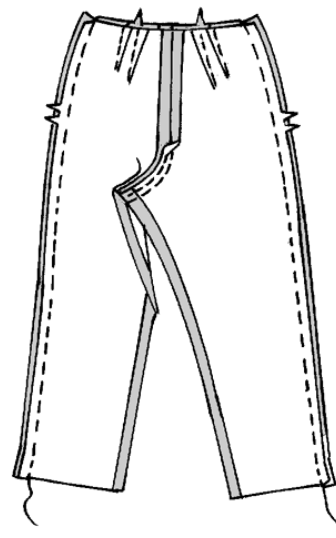
Stitch front and back together at inner leg edge.



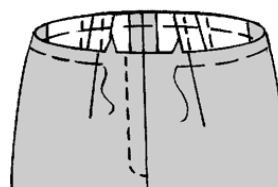
- 5** Stitch remainder of crotch seam to notch in front. Stitch again $\frac{1}{4}$ " (6mm) away in seam allowance along curve, as shown. Trim close to second stitching.



- 6** Stitch front and back together at sides.

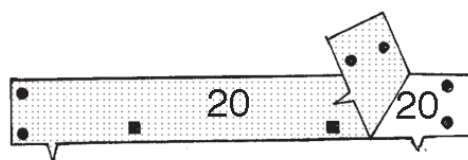


- 7** **EASESTITCH** upper edge of pants between notches, as shown.

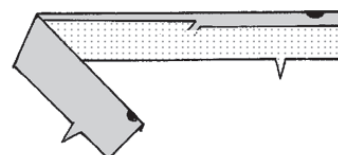


WAISTBAND

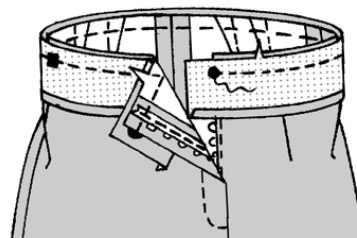
- 8** Fuse INTERFACING (20) to wrong side of WAISTBAND (20), following manufacturer's instructions.



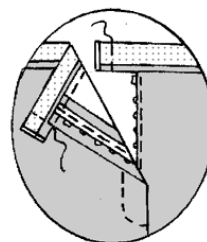
- 9** Turn in seam allowance on long unnotched edge of waistband. Press. Trim pressed seam allowance to $\frac{3}{8}$ " (1cm).



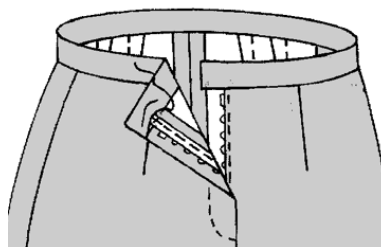
- 10** Pin waistband to upper edge of pants, matching squares to side seams and large circles on waistband to opening edges. Adjust ease; baste. Stitch. Trim. Press seam toward waistband.



- 11** With right sides together, fold waistband along foldline. Stitch ends. Trim.

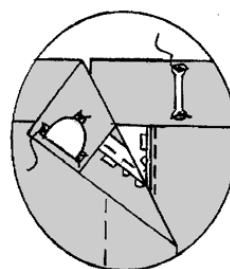


- 12** Turn. Press. **SLIPSTITCH** pressed edge over seam and extension edges together.

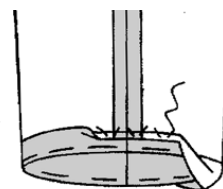


FINISHING

- 13** Sew hook and eye closure to waistband, as shown.



- 14** Turn up 1¼" (3.2cm) hem. Baste close to fold. **FINISH** raw edge. Sew hem in place. Press. To form creases, bring leg seams together; press along folds to within 9" (23cm) of upper edge.





CONGRATS!


You've completed your sewing adventure!

SHARE YOUR look!



Post your pattern and tag us at
@BUTTERICKPATTERNCOMPANY and use
#BUTTERICKPATTERNS for a chance to be
featured on our social media!

Look for more Butterick PDF patterns at **BUTTERICK.COM**

 1-800-255-2762

Copyright © 2019 CSS Industries, Inc. All Rights Reserved.
Sold for individual home use only and not for commercial or manufacturing purposes.