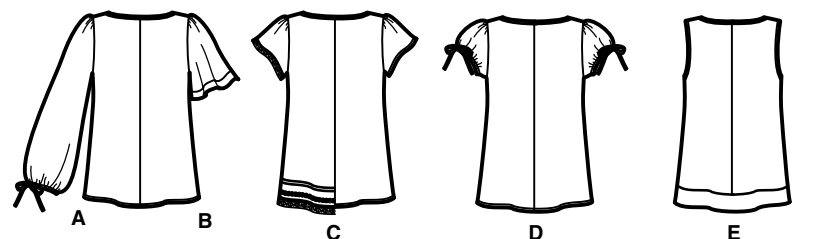
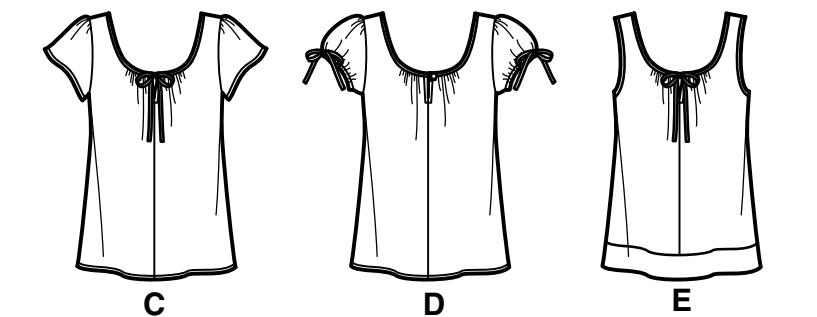
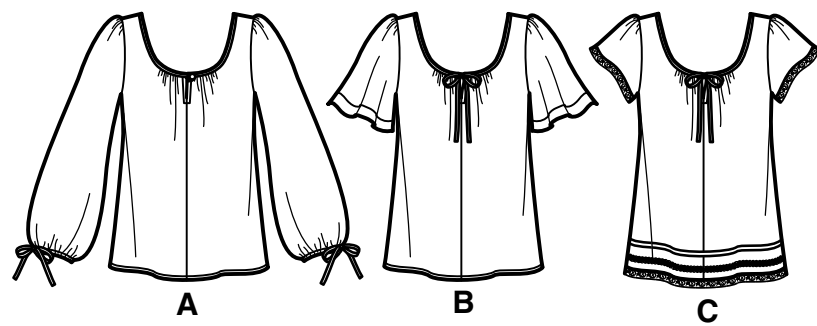
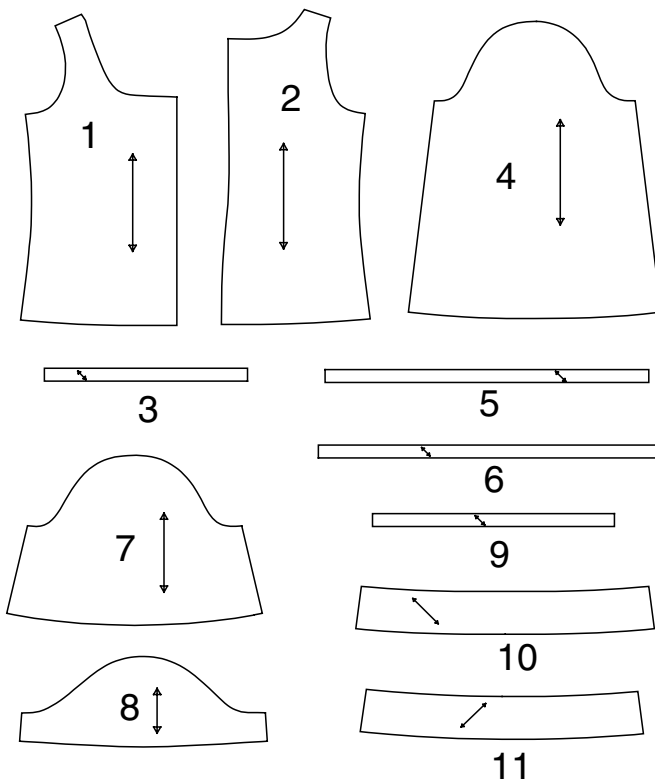


U.S. & Canada Toll-Free 1-888-588-2700 Web Site <http://www.simplicity.com> E-mail [info@simplicity.com](mailto:info@simplicity.com)

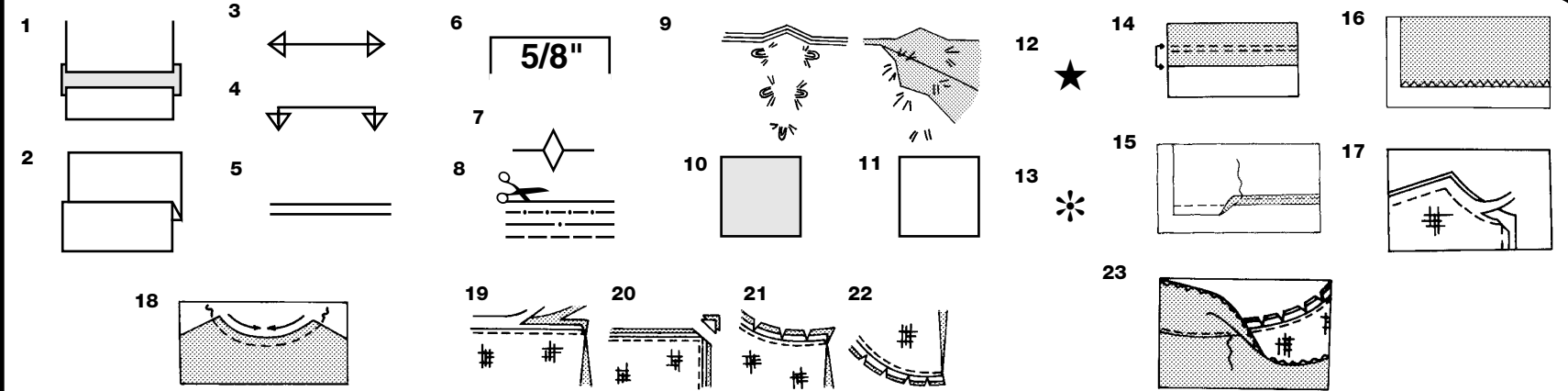
Thank you for purchasing this New Look pattern. We have made every effort to provide you with a high quality product. Gracias por haber comprado este patrón de New Look. Hemos hecho todos los esfuerzos para ofrecerle un producto de alta calidad.



11 pieces given



- 1-FRONT
- 2-BACK
- 3-NECK BINDING AND LOOP -A,D
- 4-SLEEVE -A
- 5-SLEEVE DRAWSTRING -A,D
- 6-NECK BINDING AND TIE END -B,C,E
- 7-SLEEVE -B
- 8-SLEEVE -C,D
- 9-ARMHOLE BINDING -E
- 10-FRONT BAND -E
- 11-BACK BAND -E



**How To Use Your Multi Size Pattern**

**First Prepare Your Pattern**  
Select the pattern pieces according to the view you are making.  
This pattern is made to body measurements with ease allowed for comfort and style. If your body measurements differ from those on the pattern envelope adjust the pieces before placing them on the fabric.  
Check your back neck to waist and dress length, if necessary, alter the pattern. Lengthening and shortening lines are indicated.

- 1. **TO LENGTHEN:** Cut pattern between printed lines and place paper underneath. Spread pattern the required amount and pin to paper.
- 2. **TO SHORTEN:** Fold at the printed lines to form a pleat half the amount to be shortened, ie 1/2" (1.3cm) deep to shorten 1" (2.5cm).

**Study Your Pattern Markings**

- 3. **STRAIGHT GRAIN:** Place an even distance from selvage or a straight thread.
- 4. **FOLD:** Place on fold of fabric.
- 5. **LENGTHENING AND SHORTENING LINES.**
- 6. **SEAM ALLOWANCE:** 5/8" (1.5cm) unless otherwise stated.
- 7. **NOTCHES:** Match notches.
- 8. **CUTTING LINES:** Multi patterns have different cutting lines for different sizes.
- 9. **TAILOR-TACKS:** With double thread make two loose stitches forming loop through fabric layers and pattern leaving long ends. Cut loop to remove pattern. Snip thread between fabric layers. Leave tufts.

**Cutting Layouts**

**Cutting Directions**

FOR FOLDED AND DOUBLE LAYER FABRIC - Place fabric with right side inside and pin pattern on wrong side of fabric.

FOR SINGLE LAYER - Pin pattern on right side of fabric.

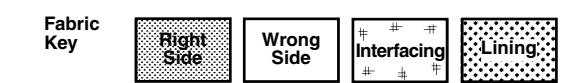
NOTE: Pattern pieces may interlock more closely for smaller sizes. Cut notches out from cutting line.

BEFORE removing pattern from fabric, transfer all pattern markings using tailor tacks or dressmaking tracing paper.

- 10. KEY: pattern printed side down
- 11. KEY: pattern printed side Up
- 12. KEY: Cut out all pieces except pieces that extend beyond folded fabric, then open out fabric and on RIGHT side of fabric, cut in positions as shown.
- 13. KEY: For with and without nap layouts ensure fabric is placed with nap or design running in same direction.

Before pinning to fabric, press tissue pattern with a warm dry iron to remove creases.

**Sewing Directions**



Sew garment following **Sewing Directions**.  
**PIN** or machine-baste seams matching notches.

**STITCH** 5/8" (1.5cm) seams unless otherwise stated.

**PRESS** seams open unless otherwise indicated, clipping when necessary so seams will lie flat.

14. **EASE-STITCH** or **GATHER** - Loosen needle tension slightly. With RIGHT side up, stitch 5/8" (1.5cm) from cut edge using a long stitch. Stitch again 1/4" (6mm) away in the seam allowance.

**EDGE FINISH** - Neaten raw edges of seams, hems and facings using one of the following methods.

- 15. Stitch 1/4" (6mm) from edge, turn under along stitching and stitch.
- 16. Zig-zag or overlock raw edges.
- 17. **INTERFACING** - Pin interfacing to WRONG side of fabric. Cut across corners that will be enclosed with seams. Machine-baste 1/2" (1.3cm) from cut edge. (Shown only on first illustration). Trim interfacing close to machine-basting. For FUSIBLE interfacing, follow manufacturer's directions.

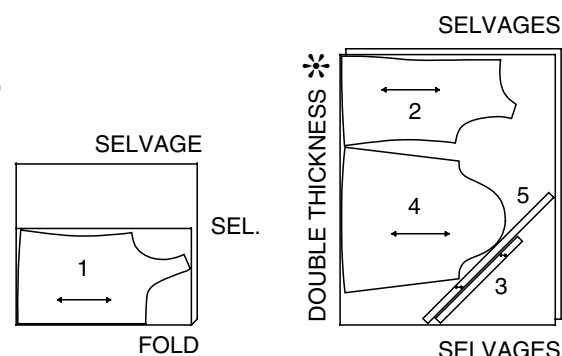
18. **STAY-STITCH** - Stitch 1/2" (1.3cm) from cut edge, in direction of arrows: (Shown only in the first illustration).

- LAYERING** - Trim seam allowance in layers.
- 19. Layer enclosed seams
- 20. Trim corners
- 21. Clip inner curves
- 22. Notch outer curves
- 23. **UNDERSTITCH** - Press facing away from garment; press seam toward facing. Facing side up, understitch close to seam through facing and seam allowances.

Sign-up for our free newsletter today at [simplicity.com](http://www.simplicity.com)

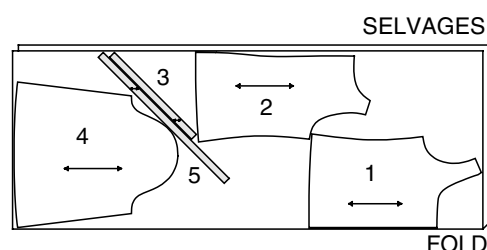
**Cutting Layouts**

**A**  
USE PIECES 1 2 3 4 5

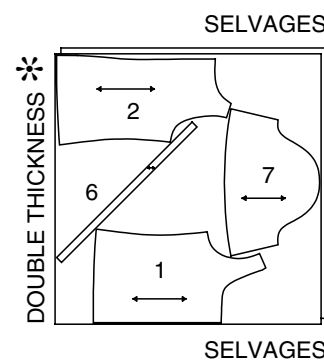


**1A** 44" 45" (115CM) WITH NAP

**1B** 58" 60" (150CM) WITH NAP

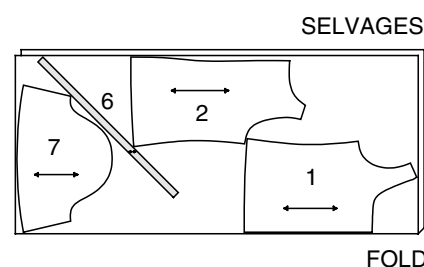


**B**  
USE PIECES 1 2 6 7

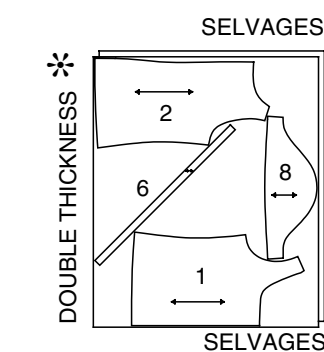


**2A** 44" 45" (115CM) WITH NAP

**2B** 58" 60" (150CM) WITH NAP

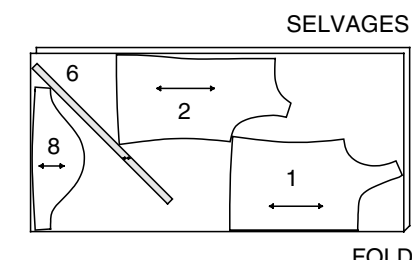


**C**  
USE PIECES 1 2 6 8

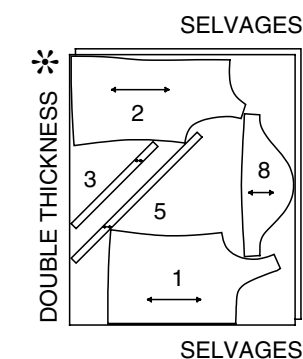


**3A** 44" 45" (115CM) WITH NAP

**3B** 58" 60" (150CM) WITH NAP

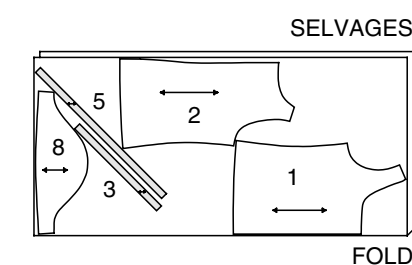


**D**  
USE PIECES 1 2 3 5 8



**4A** 44" 45" (115CM) WITH NAP

**4B** 58" 60" (150CM) WITH NAP



CUTTING LAYOUTS CONTINUE ON PAGE 2

**Español**

**A** USE LAS PIEZAS 1 2 3 4 5

**1A** 44" 45" (115CM) CON PELUSA

**1B** 58" 60" (150CM) CON PELUSA

**B** USE LAS PIEZAS 1 2 6 7

**2A** 44" 45" (115CM) CON PELUSA

**2B** 58" 60" (150CM) CON PELUSA

**C** USE LAS PIEZAS 1 2 6 8

**3A** 44" 45" (115CM) CON PELUSA

**3B** 58" 60" (150CM) CON PELUSA

**D** USE LAS PIEZAS 1 2 3 5 8

**4A** 44" 45" (115CM) CON PELUSA

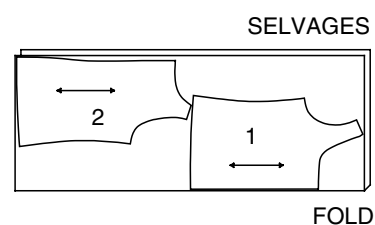
**4B** 58" 60" (150CM) CON PELUSA

SELVAGE (S) / SEL. = ORILLOS  
FOLD = DOBLEZ  
SINGLE THICKNESS = ESPESOR SENCILLO  
DOUBLE THICKNESS = ESPESOR DOBLE

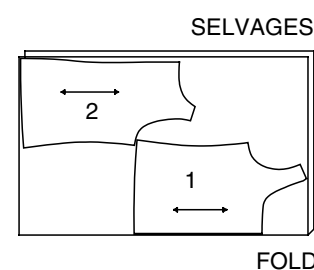
CONTINUACIÓN DE LOS DIAGRAMAS DE CORTE EN LA PÁGINA 2

**E**  
USE PIECES 1 2

**5A** 44" 45" (115CM)  
WITH NAP

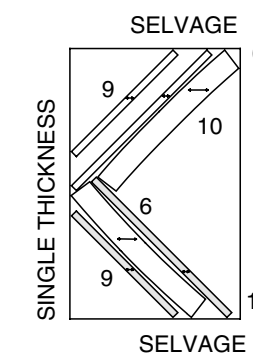


**5B** 58" 60" (150CM)  
WITH NAP



**CONTRAST**  
USE PIECES 6 9 10 11

**5C** 44" 45" OR 58" 60" (115CM OR 150CM)  
WITH NAP



**E** USE LAS P IEZAS 1 2

**5A** 44" 45" (115CM) CON PELUSA

**5B** 58" 60" (150CM) CON PELUSA

**CONTRASTES**

USE LAS P IEZAS 6 9 10 11

**5C** 44" 45" O 58" 60" (115CM O 150CM)  
CON PELUSA

**SIMPLY THE BEST SEWING TECHNIQUES AND FINISHES FOR SHEER FABRICS**

- Use 100-weight silk thread and a fine, size 60/8 or 70/10 needle in your machine.
- To avoid puckering, sew the seam along the 5/8" (1.5cm) seam line, then trim the excess seam allowance close to stitching.
- A single row of narrow zigzag stitching along the hem line, then trimming excess fabric close to stitching makes hemming fast and easy.
- Seams can be finished with one of the three methods mentioned below, choose the one you would like to use from the selections below.

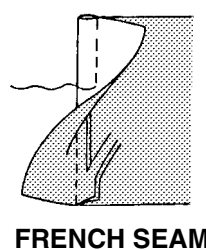
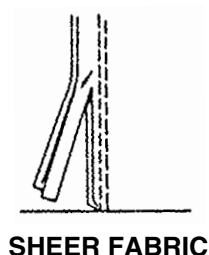
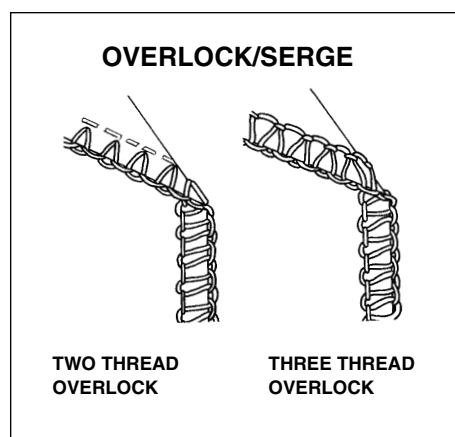
**OVERLOCK/SERGE** - Overlock over raw edges of seam, using an overlock/serger machine.

OR

**FOR SHEER FABRIC** - stitch seam again 1/8"(3mm) from first stitching. Trim close to stitching. Press seam to one side.

OR

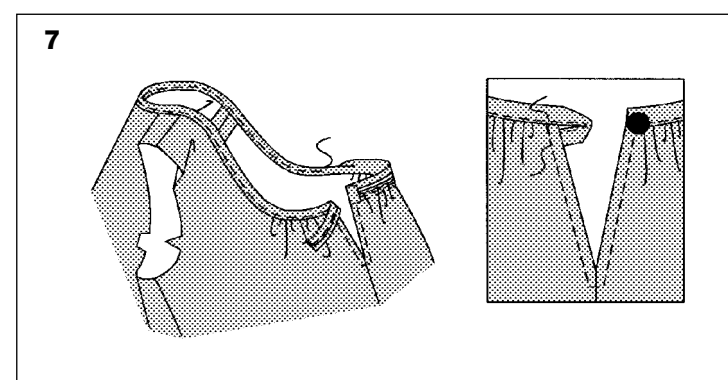
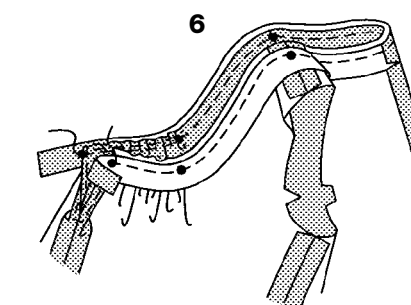
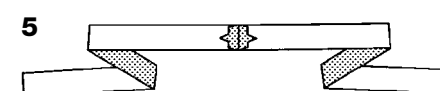
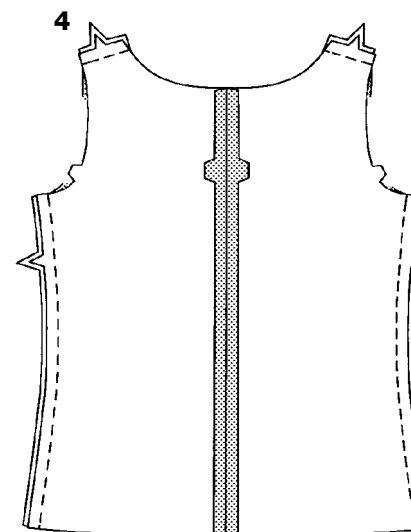
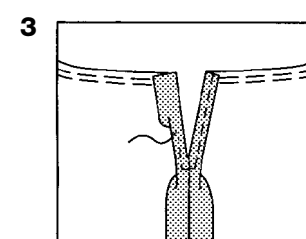
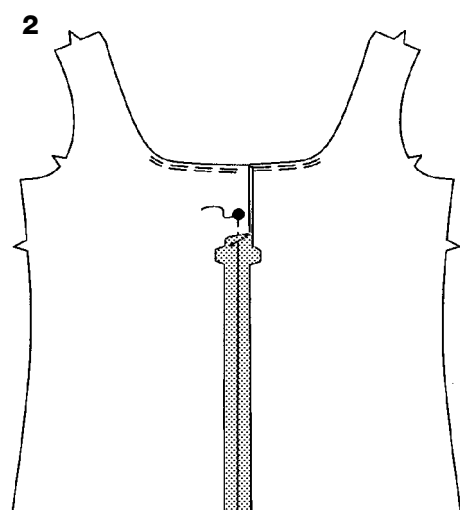
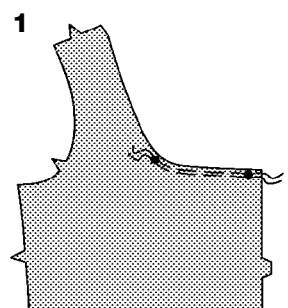
**FRENCH SEAM** — To make French seam, stitch first seam on OUTSIDE, a scant 1/4" (6mm) from seam line; trim close to stitching. Turn to INSIDE and stitch through seam allowance, encasing first seam.



**TOP A, B, C, D, E**

*NOTE: Lace, ribbon and braid trim for View C are optional.*

- 1. GATHER** neck edge of front between small dots, stitching 1/4" (6mm) from cut edge and 1/8" (3mm) INSIDE first stitching.
- With RIGHT sides together, stitch center front seam from lower edge to large dot. Back-stitch at large dot to reinforce seam.



**3.** Press under 5/8" (1.5cm) on front opening edges. Press under 1/4" (6mm) on raw edges; stitch, squaring stitching below opening.

**4.** With RIGHT sides together, stitch center back seam. Stitch front to back at shoulder seams. Stitch front to back at side seams.

**NECK BINDING AND LOOP A, D**

**5.** Stitch center back seam of neck binding and loop in a 1/4" (6mm) seam.

**6.** Pin RIGHT side of neck binding and loop to WRONG side of neck edge, matching centers back and small dots, placing inner small dots at shoulder seams. Pull up gathering stitches to fit. Baste. Stitch in 1/4" (6mm) seam between outer small dots, stretching binding to fit.

**7.** Press binding out, pressing seam toward binding. Trim LEFT end of binding to within 1/4" (6mm) from opening edge. Press under 1/4" (6mm) on long edge and LEFT end of binding.

On OUTSIDE, pin pressed edge of binding over seam so that it just covers stitching, continuing to pin pressed RIGHT edges and ends together. Stitch binding close to seam, continuing to stitch pressed edges and end together, stretching binding to fit.

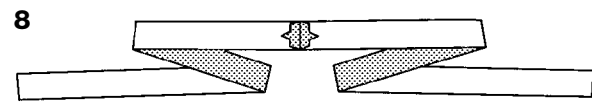
To form loop, turn RIGHT end of binding to underside of opening edge, having loop extend 1/4" (6mm) beyond opening edge. On OUTSIDE, stitch across end of loop over existing stitching.

Bring front edges together. Sew button to LEFT front neck binding under loop.

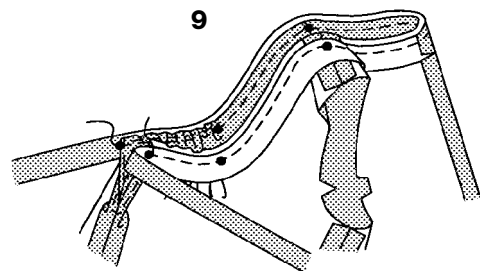
6891

3 / 4

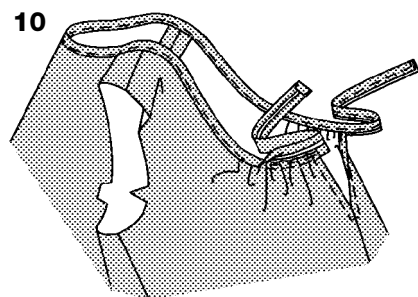
## NECK BINDING AND TIE END B, C, E



8. Stitch center back seam of neck binding and tie end in 1/4" (6mm) seam.

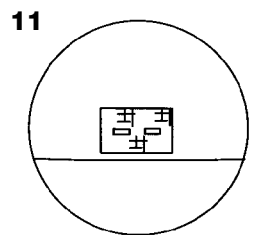


9. Pin RIGHT side of neck binding and tie end to WRONG side of neck edge, matching centers back and small dots, placing inner small dots at shoulder seams. Pull up gathering stitches to fit. Baste. Stitch in 1/4" (6mm) seam between outer small dots, stretching binding to fit.

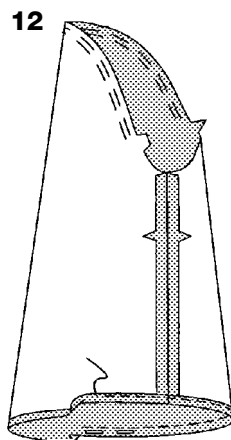


10. Press binding out, pressing seam toward binding. Press under 1/4" (6mm) on remaining edge and ends of binding and ties.  
On OUTSIDE, pin pressed edge of binding over seam so that it just covers the stitching, continuing to pin pressed edges and ends of tie together. Stitch binding close to seam, continuing to stitch pressed edges and end of tie together, stretching binding to fit.

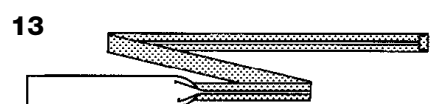
## SLEEVES A, D



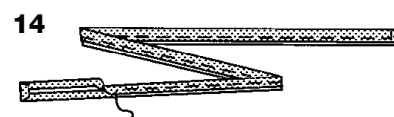
11. Cut a piece of fusible interfacing remnant and apply to WRONG side of each sleeve over buttonhole area, following manufacturer's directions. Make buttonholes in sleeve at markings.



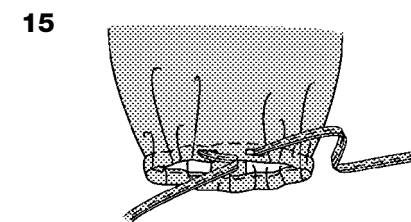
12. **GATHER** top of sleeve between notches. Stitch underarm seam. Press under 3/4" (2cm) on lower edge of sleeve, forming casing. Press under 1/4" (6mm) on raw edge. Stitch close to pressed edge of casing.



13. Press under 1/4" (6mm) on long edges and ends of sleeve drawstring.

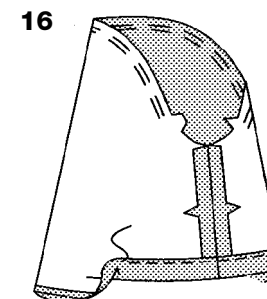


14. Fold drawstring in half lengthwise, with WRONG sides together. Stitch close to pressed edges and ends.



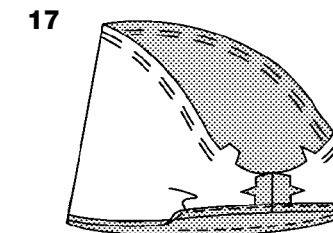
15. Insert drawstring through one buttonhole opening in casing and out the other. Pull up drawstring to fit comfortably. Fasten into a bow, as shown on pattern envelope.

## SLEEVES B

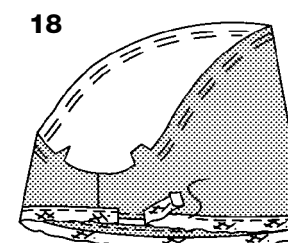


16. **GATHER** top of sleeve between notches. Stitch underarm seam. Press up hem. Press under 1/4" (6mm) on raw edge. Stitch close to inner pressed edge.

## SLEEVES C

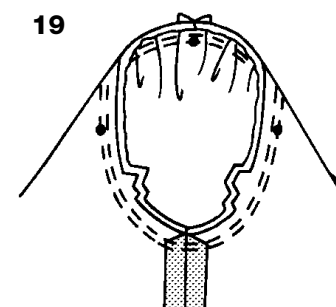


17. **GATHER** top of sleeve between notches. Stitch underarm seam. Press up hem. To form narrow hem, tuck under raw edge to meet crease. Press. Stitch hem in place.



18. On OUTSIDE, pin lace trim to sleeve, placing straight edge along hem stitching, turning under and lapping one end at underarm seam. Stitch along straight edge of trim. Slip stitch ends together, invisibly.

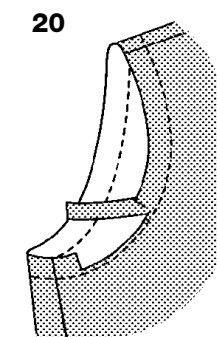
## ARMHOLE A, B, C, D



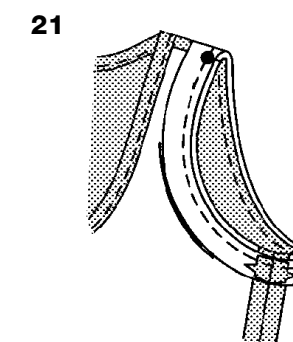
19. Turn sleeve RIGHT side out. Hold garment WRONG side out with armhole toward you. With RIGHT sides together, pin sleeve to armhole edge with center small dot at shoulder seam, matching underarm seams and remaining small dots. Pull up gathering stitches to fit.

To distribute fullness evenly, slide fabric along bobbin threads. Baste. Stitch. Stitch again 1/8" (3mm) from first stitching. Trim seam below notches close to stitching. Press only the seam allowance.

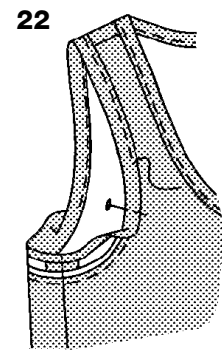
## ARMHOLE BINDING E



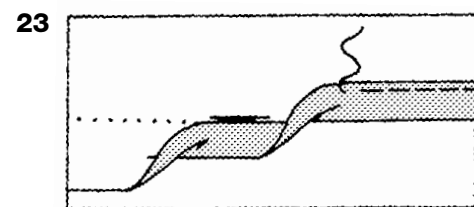
20. Machine-stitch 3/4" (2cm) from armhole edge of garment. Trim away 5/8" (1.5cm) from armhole edges of garment.



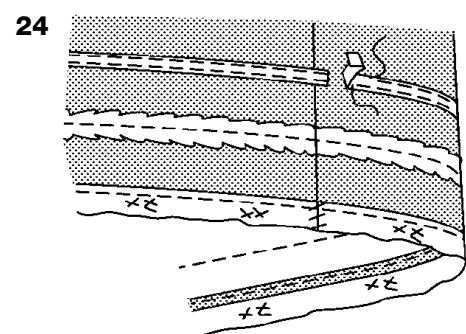
21. Stitch ends of armhole binding together. Pin RIGHT side of binding to WRONG side of armhole edge, matching seams, placing small dot at shoulder seam. Stitch in 1/4" (6mm) seam, stretching binding to fit.



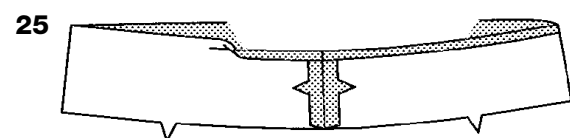
- 22.** Press binding out, pressing seam toward binding. Press under 1/4" (6mm) on remaining edge.  
On **OUTSIDE**, pin pressed edge of binding over seam so that it just covers stitching. Stitch close to pressed edge of binding, stretching binding to fit.



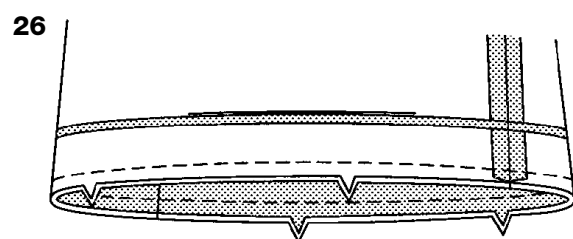
- 23.** Press under hem allowance on lower edge of top.  
To form narrow hem, tuck under raw edge to meet crease.  
Press.  
Stitch hem in place.



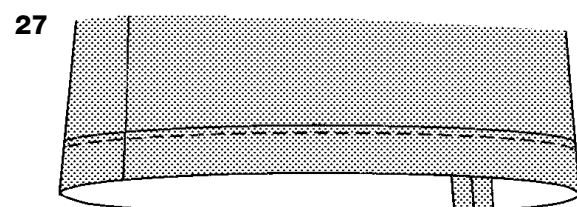
- 24. FOR VIEW C-** On **OUTSIDE**, pin lace trim to top, placing straight edge along hem stitching, turning under and having ends meet at one side seam. Stitch along straight edge of trim. Slip-stitch ends together, invisibly.  
Pin braid to top, placing lower edge of braid 1" (2.5cm) above upper edge of lace trim, turning under and lapping one end at one side seam. Stitch along center of trim.  
Pin ribbon to top, placing lower edge of ribbon 1" (2.5cm) above upper edge of braid, turning under and lapping one end at one side seam. Stitch close to long edges of ribbon.



- 25.** Stitch front band to back band at side seams. Press under 3/8" (1cm) on unnotched edge of band.



- 26.** Pin **RIGHT** side of band to **WRONG** side of top, matching centers and side seams, having raw edges even. Stitch seam. Trim seam.



- 27.** Turn band to **OUTSIDE**; press. Stitch close to pressed edge of band.

## BLUSAS A, B, C, D, E

**NOTA:** El adorno de encaje, cinta y galón para el Modelo C es opcional.

- 1. FRUNZA** el borde del escote del frente entre los puntos pequeños cosiendo a 1/4" (6mm) del borde cortado y 1/8" (3mm) en el **INTERIOR** del primer pespunte.
- DERECHO CON DERECHO**, cosa la costura del centro trasero desde el borde inferior hasta el punto grande. Retroceda el pespunte en el punto grande para reforzar la costura.
- Planche un dobléz 5/8" (1.5cm) en los bordes de la abertura del frente. Planche 1/4" (6mm) hacia dentro en los bordes no terminados; cosa girando en ángulo recto debajo de la abertura.
- DERECHO CON DERECHO**, cosa la costura del centro trasero. Cosa el frente en la espalda por las costuras de los hombros y de los lados.

## RIBETE DEL ESCOTE Y PRESILLA A, D

- Cosa la costura del centro trasero del ribete del escote y de la presilla con una costura de 1/4" (6mm).
- Prenda con alfileres el **DERECHO** del ribete del escote y de la presilla en el **REVÉS** del borde del escote, casando los centros traseros y los puntos pequeños y colocando los puntos pequeños interiores en las costuras de los hombros. Tire de los hilos de frunce para ajustar. Hilvane. Cosa con una costura de 1/4" (6mm) entre los puntos pequeños exteriores estirando el ribete para ajustar.
- Planche el ribete hacia el exterior y la costura hacia el ribete. Recorte el extremo **IZQUIERDO** del ribete a 1/4" (6mm) del borde de la abertura. Planche un dobléz de 1/4" (6mm) en el borde largo y el extremo **IZQUIERDO** del ribete. En el **EXTERIOR**, prenda con alfileres el borde planchado del ribete en la costura cubriendo el pespunte y siguiendo en los bordes del lado **DERECHO** y los extremos. Cosa cerca de la costura del ribete y de los bordes planchados y de los extremos, estirando el ribete para ajustar. Para formar la presilla, vuelva el extremo **DERECHO** del ribete en el interior de la abertura, dejando la presilla sobrepasar 1/4" (6mm) el borde de la abertura. En el **EXTERIOR**, cosa a través de la presilla, sobre el pespunte. Cosa juntos los bordes del frente. Cosa un botón en el ribete del escote del frente **IZQUIERDO**, debajo de la presilla.

## RIBETE DEL ESCOTE Y LAZO B, C, E

- Cosa la costura del centro trasero del ribete del escote y del lazo con una costura de 1/4" (6mm).
- Prenda con alfileres el **DERECHO** del ribete del escote y del lazo en el **REVÉS** del borde del escote, casando los centros traseros y los puntos pequeños, colocando los puntos pequeños interiores en las costuras de los hombros. Tire de los hilos de frunce para ajustar. Hilvane. Cosa con una costura de 1/4" (6mm) entre los puntos pequeños exteriores estirando el ribete para ajustar.
- Planche el ribete hacia el exterior y la costura hacia el ribete. Planche un dobléz de 1/4" (6mm) en el otro y los extremos del ribete y de los lazos.  
En el **EXTERIOR**, prenda con alfileres el borde planchado del ribete; prenda juntos con alfileres los bordes planchados y los extremos del lazo. Cosa cerca de la costura del ribete siguiendo en los bordes planchados y los extremos del lazo, estirando el ribete para ajustar.

## MANGAS A, D

- Corte un pedazo de entretela adhesiva y colóquelo en el **REVÉS** de las mangas en la sección de los ojales siguiendo las instrucciones del fabricante. Haga los ojales en las marcas de las mangas.
- FRUNZA** la parte superior de la manga entre las muescas. Cosa la costura del debajo del brazo. Planche 3/4" (2cm) hacia dentro en el borde inferior de la manga para formar la jareta. Planche un dobléz de 1/4" (6mm) en el borde no terminado. Cosa cerca del borde planchado de la jareta.
- Planche un dobléz de 1/4" (6mm) en los bordes largos y los extremos del cordón de la manga.
- Doble le cordón por la mitad y por su largo, **REVÉS** con **REVÉS**. Cosa cerca de los bordes planchados y los extremos.

- Inserte el cordón en el ojal de la jareta sacándolo a través del otro. Tire de los hilos de frunce para ajustar. Anude el cordón como se muestra en el sobre del patrón.

## MANGAS B

- FRUNZA** la parte superior de la manga entre las muescas. Cosa la costura del debajo del brazo. Planche el dobladillo. Planche un dobléz de 1/4" (6mm) en el borde no terminado. Cosa cerca del borde interior planchado.

## MANGAS C

- FRUNZA** la parte superior de la manga entre las muescas. Cosa la costura del debajo del brazo. Planche el dobladillo. Para formar el dobladillo angosto, vuelva el borde no terminado colocándolo en el dobléz. Planche. Cosa el dobladillo.
- En el **EXTERIOR**, prenda con alfileres el adorno de encaje en la manga, colocando el borde recto a lo largo del pespunte del dobladillo, volviendo un extremo hacia dentro y cruzándolo en la costura del debajo del brazo. Cosa a lo largo del borde recto del adorno. Cosa juntos los extremos con puntadas falsas.

## SISAS A, B, C, D

- Vuelva la manga al **DERECHO**. Mantenga la prenda sobre el **REVÉS**, con la sisa hacia usted. **DERECHO CON DERECHO**, prenda con alfileres la manga en la sisa colocando el punto pequeño del centro en la costura de los hombros y casando las costuras del debajo del brazo y los puntos pequeños restantes. Tire de los hilos de frunce para ajustar. Para distribuir la amplitud uniformemente, deslice la tela por los hilos de la canilla. Hilvane. Cosa. Vuelva a coser 1/8" (3mm) del primer pespunte en el margen de costura. Debajo de las muescas, recorte la costura a ras del pespunte.  
Planche solamente el margen de la costura.

## RIBETE DE LA SISA E

- Cosa a máquina a 3/4" (2cm) del borde de la sisa de la prenda. Recorte a 5/8" (1.5cm) de los bordes de las sisas de la prenda.
- Cosa juntos los extremos del ribete de la sisa. Prenda con alfileres el **DERECHO** del ribete en el **REVÉS** del borde de la sisa, casando las costuras, colocando el punto pequeño en la costura del hombro. Cosa con una costura de 1/4" (6mm) estirando el ribete para ajustar.
- Planche el ribete hacia el exterior y la costura hacia el ribete. Planche 1/4" (6mm) hacia dentro en el borde restante. En el **EXTERIOR**, prenda con alfileres el borde planchado del ribete encima de la costura cubriendo el pespunte. Cosa cerca del borde planchado del ribete estirándolo para ajustar.

## DOBLADILLO A, B, C, D

- Planche el dobladillo en el borde inferior de la blusa. Para formar el dobladillo angosto, vuelva el borde no terminado hacia dentro colocándolo en el dobléz. Planche.  
Cosa el dobladillo.
- PAR EL MODELO C-** En el **EXTERIOR**, prenda con alfileres el adorno de encaje en la blusa, colocando el borde recto a lo largo del dobladillo, volviendo los extremos hacia dentro y juntándolos en la costura del lado. Cosa a lo largo del borde recto del adorno. Cosa juntos los extremos con puntadas falsas invisibles. Prenda con alfileres el galón en la blusa, colocando el borde inferior a 1" (2.5cm) arriba del borde superior, y volviendo hacia dentro y cruzando un extremo en la costura del lado. Cosa a lo largo del centro del adorno. Prenda con alfileres la cinta en la blusa con el borde inferior a 1" (2.5cm) arriba del borde superior del galón volviendo un extremo hacia dentro y cruzándolo en la costura del lado. Cosa cerca de los bordes largos de la cinta.

## BANDA E

- Cosa juntas las bandas delantera y trasera por las costuras de los lados. Planche 3/8" (1cm) hacia dentro en el borde sin muescas de la banda.
- Prenda con alfileres el **DERECHO** de la banda en el **REVÉS** de la blusa, casando los centros y las costuras de los lados, casando los bordes no terminados. Cosa la costura y recórtela.
- Vuelva la banda hacia el **EXTERIOR**; planche. Cosa cerca del borde planchado del la banda.