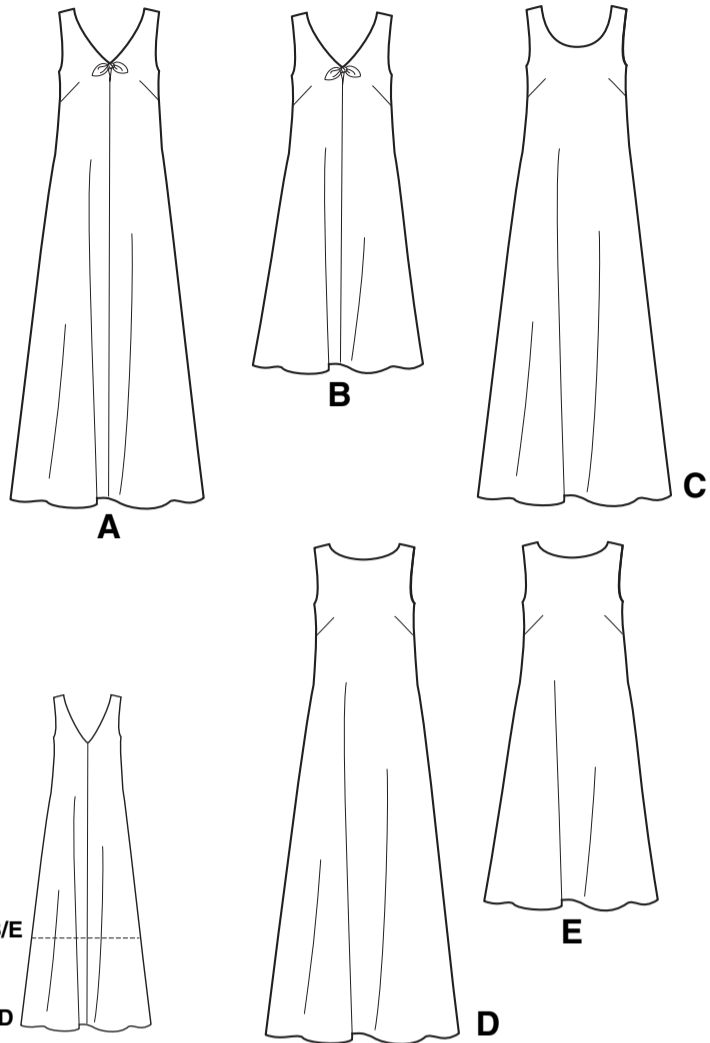


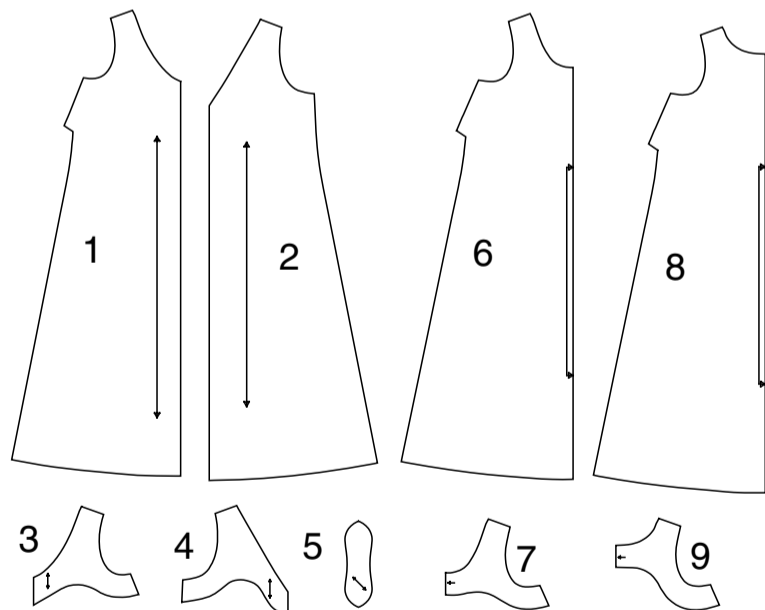
6866

1 / 2

U.S. & Canada Toll-Free 1-888-588-2700 Web Site <http://www.simplicity.com> E-mail info@simplicity.com



9 pieces given



- 1-FRONT -A,B
2-BACK
3-FRONT FACING -A,B
4-BACK FACING
5-TIE -A,B
6-FRONT -C
7-FRONT FACING -C
8-FRONT -D,E
9-FRONT FACING -D,E

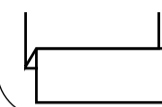
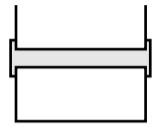
How To Use Your Multi Size Pattern

FIRST PREPARE YOUR PATTERN

Select the pattern pieces according to the view you are making. This pattern is made to body measurements with ease allowed for comfort and style. If your body measurements differ from those on the pattern envelope adjust the pieces before placing them on the fabric.

Check your nape to waist and dress length, if necessary, alter the pattern. Lengthening and shortening lines are indicated.

TO LENGTHEN: Cut pattern between printed lines and place paper underneath. Spread pattern the required amount and pin to paper.



TO SHORTEN: Fold at the printed lines to form a pleat half the amount to be shortened, ie 1/2" (1.3cm) deep to shorten 1" (2.5cm).

STUDY YOUR PATTERN MARKINGS

- STRAIGHT GRAIN: Place an even distance from selvage or a straight thread.
- FOLD: Place on fold of fabric.
- LENGTHENING AND SHORTENING LINES.
- SEAM ALLOWANCE: 5/8" (1.5cm) unless otherwise stated.
- NOTCHES: Match notches.
- CUTTING LINES: Multi patterns have different cutting lines for different sizes.

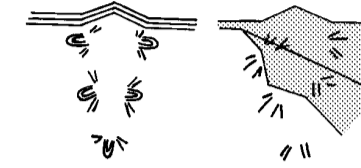
CUTTING DIRECTIONS

FOR FOLDED AND DOUBLE LAYER FABRIC - Place fabric with right side inside and pin pattern on wrong side of fabric. FOR SINGLE LAYER - Pin pattern on right side of fabric. NOTE: Pattern pieces may interlock more closely for smaller sizes.

Cut notches out from cutting line.

BEFORE removing pattern from fabric, transfer all pattern markings using tailor tacks or dressmaking tracing paper.

TAILOR-TACKS With double thread make two loose stitches forming loop through fabric layers and pattern leaving long ends. Cut loop to remove pattern. Snip thread between fabric layers. Leave tufts.

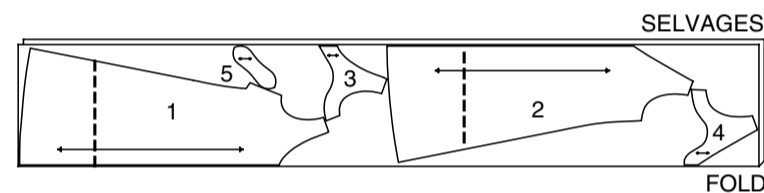


NOTE: DASHED LINE SHOWN ON PATTERN PIECES IN CUTTING LAYOUTS INDICATES CUTTING LINE FOR SHORTER LENGTH.

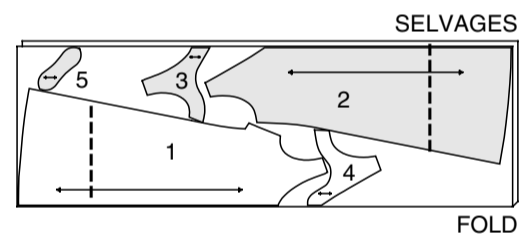
A, B DRESS

USE PIECES 1 2 3 4 5

44" 45" (115CM)
WITH NAP



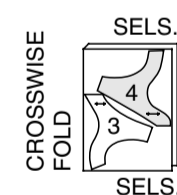
58" 60" (150CM)
WITHOUT NAP



INTERFACING

USE PIECES 3 4

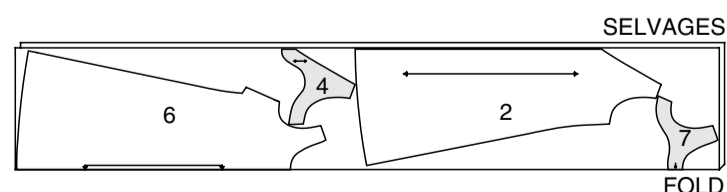
22" TO 36" (55CM TO 90CM)



C DRESS

USE PIECES 2 4 6 7

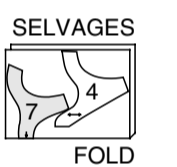
44" 45" (115CM)
WITH NAP



INTERFACING

USE PIECES 4 7

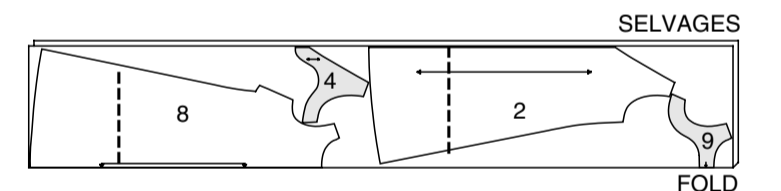
32" TO 36" (82CM TO 90CM)



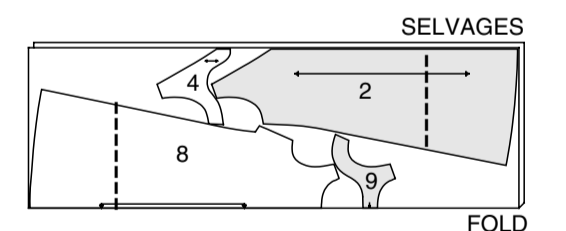
D, E DRESS

USE PIECES 2 4 8 9

44" 45" (115CM)
WITH NAP



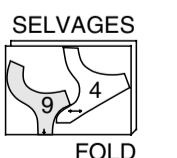
58" 60" (150CM)
WITHOUT NAP



INTERFACING

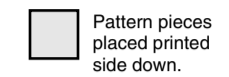
USE PIECES 4 9

32" TO 36" (82CM TO 90CM)

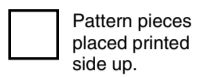


Cutting Layouts

- ★ CUT OUT ALL PIECES EXCEPT PIECES THAT EXTEND BEYOND FOLDED FABRIC, THEN OPEN OUT FABRIC AND CUT IN POSITIONS AS SHOWN.
- * FOR WITH AND WITHOUT NAP LAYOUTS ENSURE FABRIC IS PLACED WITH NAP OR DESIGN RUNNING IN SAME DIRECTION.



Pattern pieces placed printed side down.



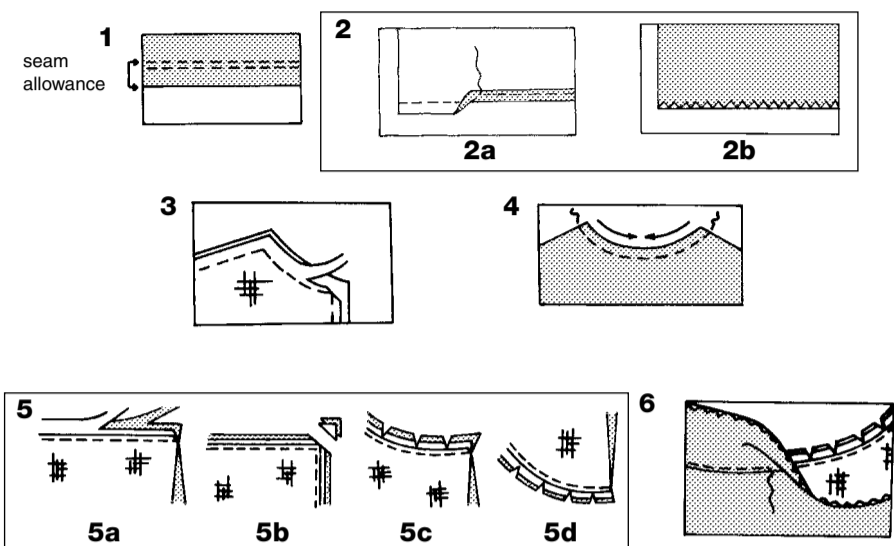
Pattern pieces placed printed side up.

FINISHED GARMENT MEASUREMENTS GIVEN ON PATTERN = STANDARD BODY MEASUREMENTS + WEARING EASE + DESIGN EASE
BEFORE PINNING TO FABRIC, PRESS TISSUE PATTERN WITH A WARM DRY IRON TO REMOVE CREASES.

6866

2 / 2

FABRIC KEY



SEWING DIRECTIONS

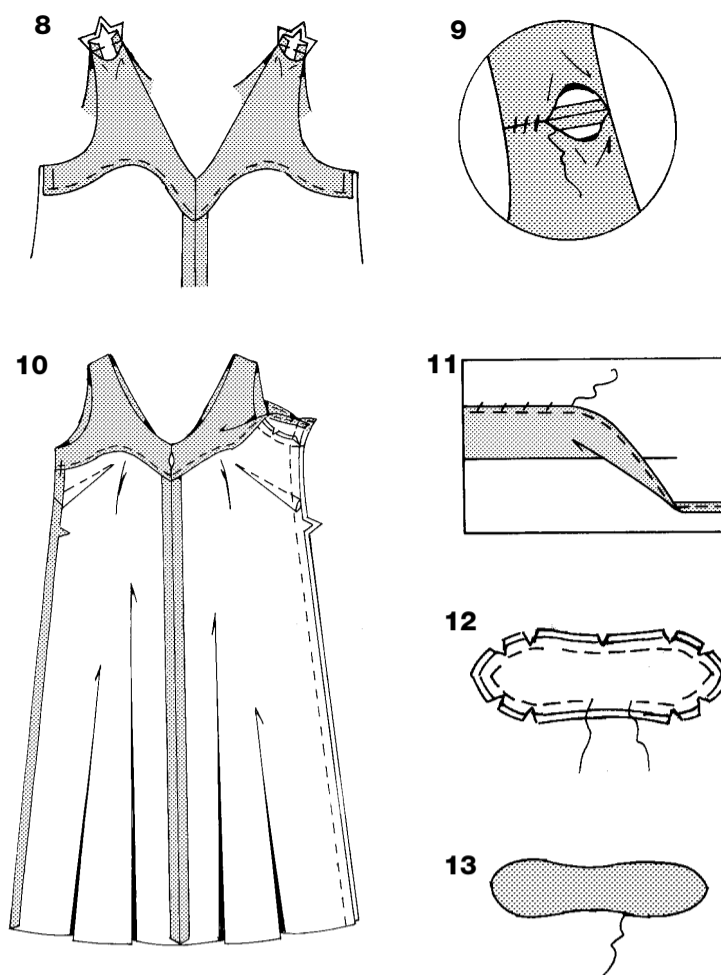
Sew garment following Sewing Directions.

- PIN or machine-baste seams matching notches.
- STITCH 5/8" (1.5cm) seams unless otherwise stated.
- PRESS seams open unless otherwise indicated, clipping when necessary so seams will lie flat.

- EASE-STITCH** or **GATHER** - Loosen needle tension slightly. With RIGHT side up, stitch 5/8" (1.5cm) from cut edge using a long stitch. Stitch again 1/4" (6mm) away in the seam allowance.
- EDGE FINISH** - Neaten raw edges of seams, hems and facings using one of the following methods.
 - Stitch 1/4" (6mm) from edge, turn under along stitching and stitch.
 - Zig-zag or overlock raw edges.
- INTERFACING** — Pin interfacing to WRONG side of fabric. Cut across corners that will be enclosed with seams. Machine-baste 1/2" (1.3cm) from cut edge. (Shown only on first illustration). Trim interfacing close to machine-basting. For FUSIBLE interfacing, follow manufacturer's directions.
- STAY-STITCH** — Stitch 1/2" (1.3cm) from cut edge, in direction of arrows: (Shown only in the first illustration).
- LAYERING** — Trim seam allowance in layers.
 - Layer enclosed seams
 - trim corners
 - clip inner curves
 - notch outer curves
- UNDERSTITCH** — Press facing away from garment; press seam toward facing. Facing side up, understitch close to seam through facing and seam allowances.

DRESS A, B

- STAY-STITCH** front neck edge.
Make darts. Press down.
Stitch center front seam, leaving an opening between small dots. Press seam open.
- Apply **INTERFACING** to front facing sections.
Stitch center front seam of facing, leaving an opening between small dots. Press seam open.
EDGE FINISH unnotched edge of front facing.
Press under 5/8" (1.5cm) on shoulder edges; trim to 1/4" (6mm).
- With RIGHT sides together, stitch facing to front neck edge along stitching line and seam line, matching centers. To reinforce stitching at center front, stitch again over first stitching.
LAYER seam; clip curves and to stitching at center front
Stitch armhole edge. **LAYER** seam; clip curves.
- Turn facing to **INSIDE**; press.
Slip-stitch front opening edge of garment and facing together invisibly.
- STAY-STITCH** back neck edge.
Stitch center back seam.
- Apply **INTERFACING** to back facing sections.
Stitch center back seam of facing.
EDGE FINISH unnotched edge of back facing.
Press under 5/8" (1.5cm) on shoulder edge of facings. Trim to 1/4" (6mm).
- With RIGHT sides together, stitch facing to back neck edge, stitching along stitching line and seam line, matching centers. To reinforce stitching at center back, stitch again over first stitching.
LAYER seam; clip curves and to stitching at center back.
Stitch armhole edges.
LAYER seams; clip curves.



- Turn facing to **INSIDE**; press.
Stitch front to back at shoulder seams, being careful not to catch in pressed edges of facings. Trim seam. Press seam open.
- Slip shoulder seams under facings.
Slip-stitch pressed edges together.
- Open out facings at side edges. Stitch front to back at side seams from lower edge to edge of facing.
Tack facings to center front and side seams.
- Mark length.
Press up hem along marking.
Mark depth of hem; trim evenly.
EDGE FINISH the raw edge.
Slip-stitch hem in place.
- With RIGHT sides together, stitch facing to tie in 3/8" (1cm) seam, leaving an opening to turn.
Trim seam and corners; clip curves.
- Turn tie RIGHT side out; press.
Slip-stitch opening edges together.
Insert tie through opening in front and tie, as shown on front of envelope.

DRESS C, D, E

- STAY-STITCH** front neck edge.
Make darts. Press down.
Illustrations show view C
- Apply **INTERFACING** to front facing.
EDGE FINISH unnotched edge of front facing.
Press under 5/8" (1.5cm) on shoulder edges; trim to 1/4" (6mm).
- With RIGHT sides together, stitch facing to front neck and armhole edges, matching centers.
Trim seam; clip curves.
- Turn facing to **INSIDE**; press.

COMPLETE SAME AS A, B, SEE STEPS 5 THROUGH 11.

