

# Belgium White Chocolate Shavings

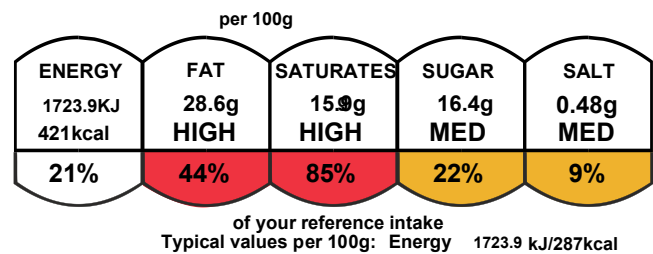
Serving Size

Number of servings 12

Pack Size

Pack size 1760.0g  
Number of servings 12

Graphics



Nutrition Facts		
12 servings per container		
Serving size		5oz (147g)
Amount per serving		Calories
		420
		% Daily Value*
Total fat	31g	
		40%
Saturated Fat	17g	85%
Trans Fat	1g	
Cholesterol	60mg	20%
Sodium	210mg	9%
Total Carbohydrate	34g Dietary	12%
Fiber	2g	6%
Total Sugars	20g	
Includes 12g Added Sugars		25%
Protein	3g	
Vitamin D	0.2mcg	0%
Calcium	47mg	4%
Iron	0.7mg	4%
Potassium	74mg	2%
*The % Daily Value (DV) tells you how much a nutrient in a serving of food contributes to a daily diet. 2,000 calories a day is used for general nutrition advice.		

## Ingredients and Allergens

WHEAT Flour (with Added Calcium Carbonate, Iron, Niacin (B3) And Thiamine (B1)), Vegetable Oil (Palm And Rapeseed), Sugar, Water, SOYA Flour, Salt, Emulsifier (E471), Natural Flavouring, Cheese (MILK), Cream (MILK), white Chocolate (18%)(MILK Powders (Whole And Skimmed) (37.5%), Sugar, Cocoa Butter, Vegetable Fats (Mango Kernel, Palm, Salt), Emulsifier(Sunflower Lecithin), Natural Flavouring, White Chocolate Contains Vegetable Fat In Addition To Cocoa Butter), Icing Sugar, Vanilla Essence (Water, Monopropylene Glycol, Colour (E150a), Flavouring),Locust bean gum, Xanthan gum

## Nutrients

	per 100g
Energy	1723.9kJ
Energy	414.0kcal
Fat	28.6g
of which saturates	15.9g
Carbohydrate	34.1g
of which sugars	16.4g
Added Sugar	2.9g
Fibre	0.7g
Protein	5.8g
Salt	0.48g
	143.9mg

Self Life: Frozen 6 Months. Defrosted 4 days. Storage <-18oC,

once thawed Chilled <5oC Defrost in Chill for minimum of 6 Hours.

