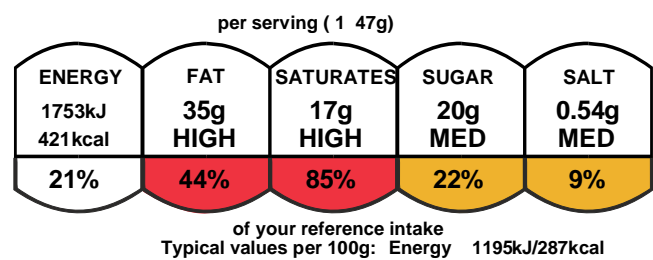


# Strawberry Cheesecake (Frozen)

Serving Size	
Number of servings	12
Pack Size	
Pack size	1840.0g
Number of servings	12

## Graphics



Nutrition Facts	
12 servings per container	
Serving size	5oz (147g)
Amount per serving	Calories
	409
% Daily Value*	
Total fat	31g 40%
Saturated Fat	17g 85%
Trans Fat	1g
Cholesterol	60mg 20%
Sodium	210mg 9%
Total Carbohydrate	34g Dietary 12%
Fiber	2g 6%
Total Sugars	20g
Includes 12g Added Sugars	25%
Protein	3g
Vitamin D 0.2mcg 0%	
Calcium	47mg 4%
Iron	0.7mg 4%
Potassium	74mg 2%
*The % Daily Value (DV) tells you how much a nutrient in a serving of food contributes to a daily diet. 2,000 calories a day is used for general nutrition advice.	

## Ingredients and Allergens

Full Fat Cream Cheese (**MILK**, Salt, Thickener: E410), Cream (**MILK**), Digestive Biscuits (**WHEAT** flour (Calcium carbonate, Iron, Niacin, Thiamine), Palm oil, Wholemeal **WHEAT** flour, sugar, invert sugar syrup, raising agent E500ii E503), Salt, Strawberries, Glucose Syrup, Water, Sugar, Gelling Agent (E407); Acidity Regulators: Citric Acid (E331ii); Colour: (E122), Flavouring, Butter (**MILK**), Icing Sugar, Vanilla essence(water, Mon propylene Glycol, Colour (Caramel E150a),Flavourings), Xanthan Gum, Locust Bean.

For allergens, including cereals containing gluten, see ingredients in **bold**.

## Nutrients

	per 100g
Energy	987.6kJ
Energy	237.7kcal
Fat	13.3g
of which saturates	10.3g
Carbohydrate	18.3g
of which sugars	10.1g
Added Sugar	1.9g
Fibre	0.9g
Protein	2.0g
Salt	0.325g
Sodium	140.9mg

Self Life: Frozen 6 Months. Defrosted 4 days. Storage <-18oC,

once thawed Chilled <5oC Defrost in Chill for minimum of 6 Hours.

