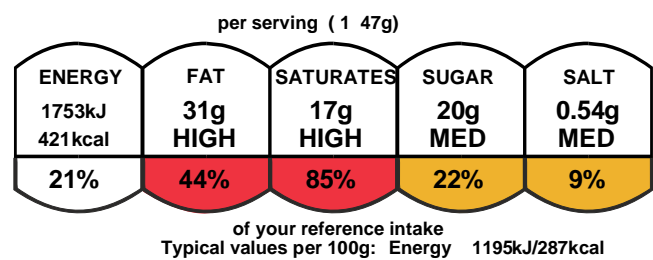


Lotus cheesecake (Frozen)

Serving Size	
Number of servings	12
Pack Size	
Pack size	1760.0g
Number of servings	12

Graphics



Nutrition Facts		
12 servings per container		
Serving size		5oz (147g)
Amount per serving		Calories
		420
% Daily Value*		
Total fat	31g	40%
Saturated Fat	17g	85%
Trans Fat	1g	
Cholesterol	60mg	20%
Sodium	210mg	9%
Total Carbohydrate	34g Dietary	12%
Fiber	2g	6%
Total Sugars	20g	
Includes 12g Added Sugars		25%
Protein	3g	
Vitamin D	0.2mcg	0%
Calcium	47mg	4%
Iron	0.7mg	4%
Potassium	74mg	2%
*The % Daily Value (DV) tells you how much a nutrient in a serving of food contributes to a daily diet. 2,000 calories a day is used for general nutrition advice.		

Ingredients and Allergens

Full Fat Cream Cheese, Cream (**Milk**), Digestive Biscuits (**Wheat, Milk, Soya**), Icing Sugar, Butter (**Milk**), Original Caramelised Biscuits (58%)(**Wheat** Flour, Sugar, Vegetable Oils (Palm, Rapeseed), Candy Sugar Syrup, Raising Agent (Sodium Hydrogen Carbonate), **Soya** Flour, Salt, Cinnamon), Rapeseed Oil,Sugar, Emulsifier (**Soya** Lechithin), Citric Acid, **wheat** Flour, Sugar, Vegetable Oil (palm Oil, Rapeseed Oil), Candy Sugar Syrup, Raising Agent (E500), **Soya** Flour, Salt, Cinnaman.

Locust Bean Gum, Xanthan Gum, Vanilla Extract. Allergen advice. For allergens, including cereals containing gluten, see ingredients in **bold**.

Nutrients

	per 100g	per 147 g serving
Energy	1195.1kJ	1752.8kJ
Energy	287.2kcal	421.2kcal
Fat	21.2g	31.1g
of which saturates	11.6g	17.0g
Carbohydrate	22.1g	32.4g
of which sugars	13.6g	19.9g
Added Sugar	8.4g	12.4g
Fibre	1.2g	1.7g
Protein	1.8g	2.6g
Salt	0.37g	0.54g
Sodium	143.9mg	211.0mg

Self Life: Frozen 6 Months. Defrosted 4 days. Storage <-18oC,

once thawed Chilled <5oC Defrost in Chill for minimum of 6 Hours.

generated by alacalc.com 25th June 2021 15:27

