

Fresh Strawberry & White Chocolate

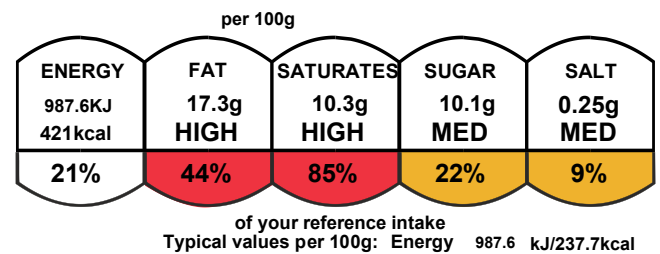
Serving Size 120g

Number of servings 12

Pack Size

Pack size 1460g
Number of servings 12

Graphics



Nutrition Facts		
12 servings per container		
Serving size		5oz (147g)
Amount per serving		Calories
		414.0kcal
% Daily Value*		
Total fat	22.8g	40%
Saturated Fat	13.5g	85%
Trans Fat	1g	
Cholesterol	60mg	20%
Sodium	210mg	9%
Total Carbohydrate	34g Dietary	12%
Fiber	2g	6%
Total Sugars	20g	
Includes 12g Added Sugars		25%
Protein	3g	
Vitamin D	0.2mcg	0%
Calcium	47mg	4%
Iron	0.7mg	4%
Potassium	74mg	2%
*The % Daily Value (DV) tells you how much a nutrient in a serving of food contributes to a daily diet. 2,000 calories a day is used for general nutrition advice.		

Ingredients and Allergens

Full Fat Cream Cheese (MILK, Salt, Thickener: E410), Cream (MILK), Digestive Biscuits (WHEAT flour (Calcium carbonate, Iron, Niacin, Thiamine), Palm oil, Wholemeal WHEAT flour, sugar, invert sugar syrup, raising agent E500ii E503), Salt, Strawberries, Glucose Syrup, Water, Sugar, White Chocolate (8% MILK, Gelling Agent (E407); Acidity Regulators: Citric Acid (E331ii); Colour: (E122), Flavouring, Butter (MILK), Icing Sugar, Vanilla essence(water, Mon propylene Glycol, Colour (Caramel E150a),Flavourings), Xanthan Gum, Locust Bean.

For allergens, including cereals containing gluten, see ingredients in Capital
May contain trace of NUTS

Nutrients

	per 100g
Energy	987.6kJ
Energy	237.7kcal
Fat	17.3g
of which saturates	10.3g
Carbohydrate	18.3g
of which sugars	10.1g
Added Sugar	0.9g
Fibre	0.9g
Protein	2.0g
Salt	0.25g

Self Life: Frozen 6 Months. Defrosted 4 days. Storage <-18oC,

once thawed Chilled <5oC Defrost in Chill for minimum of 6 Hours.

