

	FLORENTINE WAFERS 2 x200 CODE: DW345022	Version: 8.1
		Approved: NG
		Date: 30/06/2021

Product Specification:

Product Description: Shaped wafer biscuit for ice cream decoration.

Country of origin: UK

Ingredient Listing:

Wheat Flour (**Wheat** Flour, Calcium Carbonate, Iron, Niacin, Thiamin), Sugar, Coconut Oil, Emulsifier: **Soya** Lecithin, **Wheat** Starch, Whey Powder (**Milk**), **Egg** Albumen, Raising Agent: Sodium Bicarbonate, Salt, **Egg** Yolk Powder, Colour: Annatto Norbixin.

Allergy Advice: For allergens including cereals containing gluten, See ingredients in **bold**.

Allergen declaration in accordance with Labelling rules in European Directives 2003/89/EC and 2006/142/EC and Regulation (EU) No 1169/2011.

Suitability: Vegetarians.

Sensory; Physical and Chemical details

Appearance	Flat shaped wafers	Taste	Characteristic, without foreign taste
Height (mm)	77±1	Moisture	Max 5.0
Width (mm)	109±1	Weight (g)	2.8±0.5

Shelf life:

24 months from manufacture.

Storage:

Keep sealed in original packaging; ambient temperature, dry place.

GMO Statement:

Product is GMO free. It must not be labelled by EC regulation no. 1829/2003 and EC regulation no. 1830/2003

Nutritional Values per 100g

Energy	428kcal / 1809kJ
Protein	7.5
Total Carbohydrate	81
of which Sugars	38
Fat	8
of which Saturates	6
Fibre	1.7
Salt	0.4

Microbiological Limits

	Limit cfu/g
TVC	<1000
Moulds & Yeasts	<100
Salmonella	Absent/25g

Logistical details: 2X200

GTIN; Inner: 05060006360664, Outer: 05060006360954

Packaging materials in compliance with REGULATION (EC) No 1935/2004 on materials and articles intended to come into contact with food.

Packaging	Material	Dimensions (mm)	Weight (g)
Tin	Metal	L185xW180	316
Glassine paper	Paper		7.4
Divider	Paper		19
Tin label	Paper		0.04
Cello tape	Paper		0.4
Outer carton	Cardboard	L 370x W 190xH 190	144
White gum tape	Paper		4
Box label	Paper		0.3
Shrink wrap	Paper		250
Pallet label	Paper		1.2

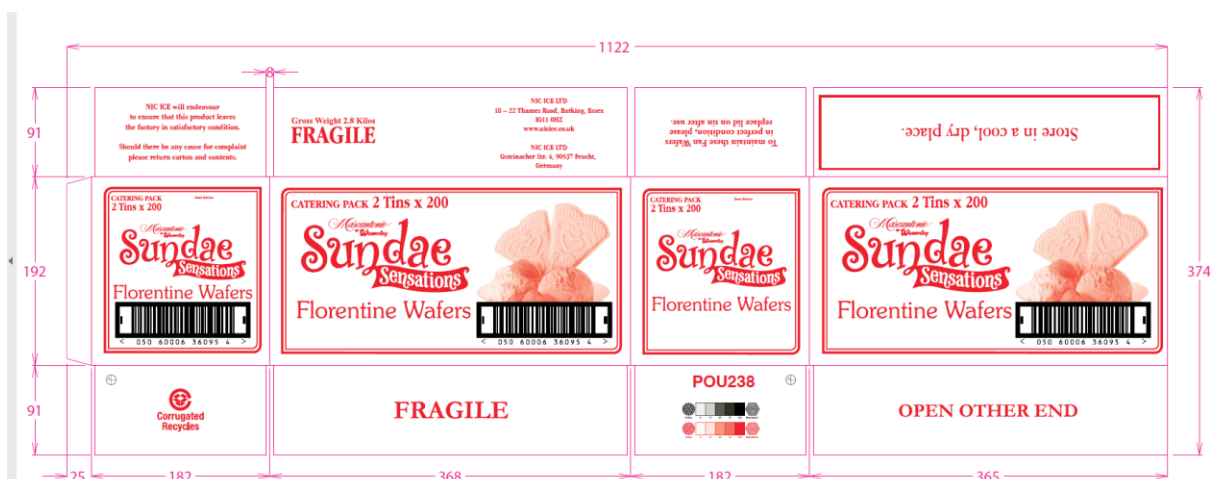
	FLORENTINE WAFERS 2 x200 CODE: DW345022	Version: 8.1
		Approved: NG
		Date: 30/06/2021

Pallet	Wooden	H 1915(pallet +Boxes) x W 1000 x L 1200	2500
Cases per pallet:	150	Net weight (kg):	1.86
Cases per layer:	15	Gross weight (kg):	2.64
Layers per pallet:	10	Pallet weight (kg):	421

Tin Label



Outer case



	FLORENTINE WAFERS 2 x200 CODE: DW345022	Version: 8.1
		Approved: NG
		Date: 30/06/2021

VERSION HISTORY

PRODUCT SPECIFICATION IS CONTROLLED AND TRACKED. USE THE TABLE BELOW TO PROVIDE THE VERSION NUMBER, THE AUTHOR IMPLEMENTING THE VERSION, THE DATE OF THE VERSION, THE NAME OF THE PERSON APPROVING THE VERSION, THE DATE THAT PARTICULAR VERSION WAS APPROVED, AND A BRIEF DESCRIPTION OF THE REASON FOR CREATING THE REVISED VERSION.

Version	Implemented By	Revision Date	Approved By	Approval Date	Reason
1.0	K.Q	10/04/2015	N.G	20/08/2015	New
2.0	KQ	13/12/2017	NG	13/12/2017	Updated with new nut info cert No TCHC333170-1
3.0	S.K	28/02/19	NG	28/02/19	Packaging
8.0	NG	26/08/20	NG	26/08/20	New format
8.1	NG	30/06/2021	NG	30/06/2021	New artwork, Annatto and EU address