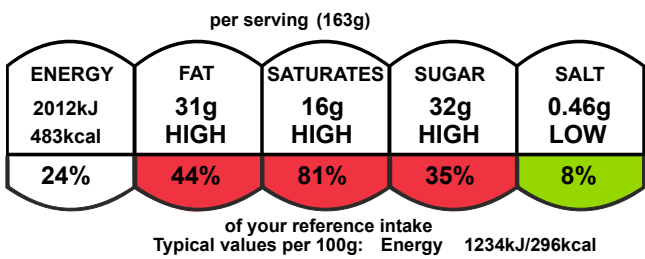


Cookies & Cream Cheesecake (Frozen)

Serving Size

Number of servings	12
Pack Size	
Pack size	1957.0g
Number of servings	12

Graphics



Nutrition Facts		
12 servings per container		
Serving size		6oz (163g)
Amount per serving		
Calories		480
% Daily Value*		
Total fat	31g	39%
Saturated Fat	16g	81%
Trans Fat	0.5g	
Cholesterol	55mg	18%
Sodium	180mg	8%
Total Carbohydrate	48g	17%
Dietary Fiber	2g	8%
Total Sugars	32g	
Includes 12g Added Sugars		25%
Protein	4g	
Vitamin D	0.1mcg	0%
Calcium	26mg	2%
Iron	0.3mg	2%
Potassium	27mg	0%
*The % Daily Value (DV) tells you how much a nutrient in a serving of food contributes to a daily diet. 2,000 calories a day is used for general nutrition advice.		

Nutrients

	per 100g	per 163 g serving
Energy	1233.9kJ	2012.2kJ
Energy	296.3kcal	483.2kcal
Fat	18.9g	30.8g
of which saturates	9.9g	16.2g
Carbohydrate	28.0g	45.7g
of which sugars	19.4g	31.7g
Added Sugar	7.6g	12.4g
Fibre	1.3g	2.1g
Protein	2.1g	3.5g
Salt	0.28g	0.46g
Sodium	110.2mg	179.8mg

Ingredients and Allergens

Full Fat Cream Cheese, WHEAT Flour, Sugar, Palm Oil, Rapeseed Oil, Fat-Reduced Cocoa Powder 4, 5 %, WHEAT Starch, Glucose-Fructose Syrup, Raising Agents (Potassium Carbonates, Ammonium Carbonates, Sodium Carbonates), Salt, Emulsifiers (**Soya** Lecithin, Sunflower Lecithin), Flavouring (**Gluten**), Cream (**Milk**), Icing Sugar, Butter (**Milk**), Sugar, Cocoa Butter, Dried Whole **Milk**, Cocoa Mass, Whey Powder (**Milk**), **Milk** Fat, Emulsifier (sunflower Lecithins) Flavouring., Vanilla Extract, Locust Bean Gum, **milk**. Xanthan Gum.

Allergen advice. For allergens, including cereals containing gluten, see ingredients in **bold**.

Notes

Self Life: Frozen 6 Months. Defrosted 4 days.

Storage <-18oC, once thawed Chilled <5oC

Defrost in Chill for minimum of 6 Hours.

generated by alacalc.com
6th June 2021 20:31