

A proposal to hold ESOP *XLII* in the City of Armagh,  
Northern Ireland, on 15-19 September 2023



*LOC: Heather Alexander, Apostolos Christou, Simon Jeffery, Gavin Ramsay, Sinead Mackle & Marc Sarzi*

# The Venue: Armagh Observatory and Planetarium



## A short history of AOP (I)

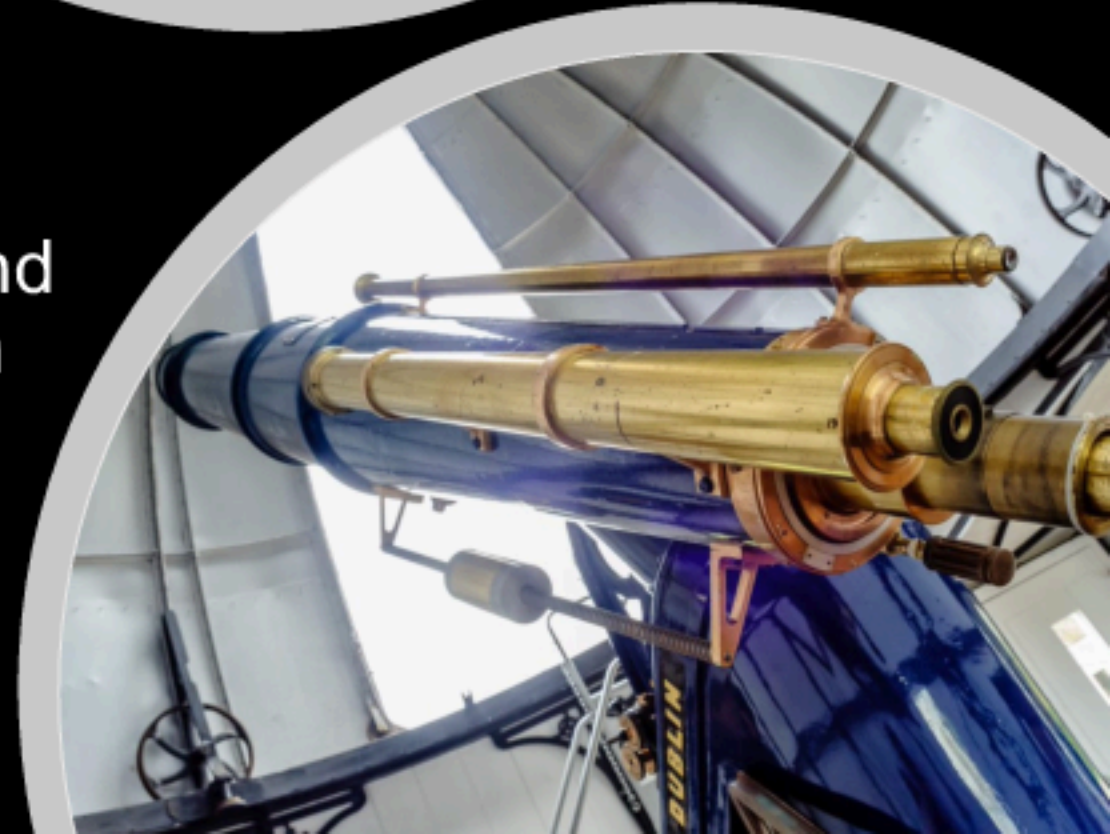
Armagh Observatory  
research goes back to 1790.

### OF NEBULÆ AND CLUSTERS OF STARS

BEING THE CATALOGUE OF THE LATE  
SIR JOHN F. W. HERSCHEL, BART.

REVISED, CORRECTED, AND ENLARGED

Always at the forefront of  
telescope development and  
scientific research, both in  
Ireland and internationally



## A short history of AOP (II)

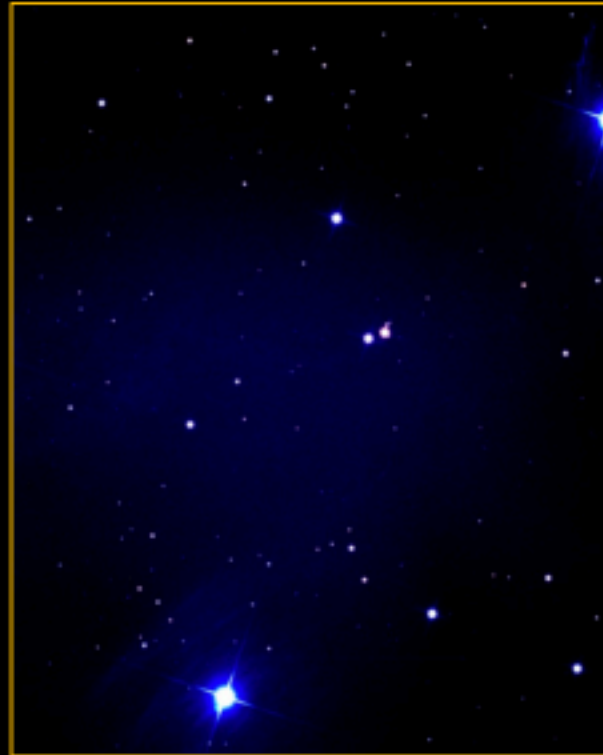
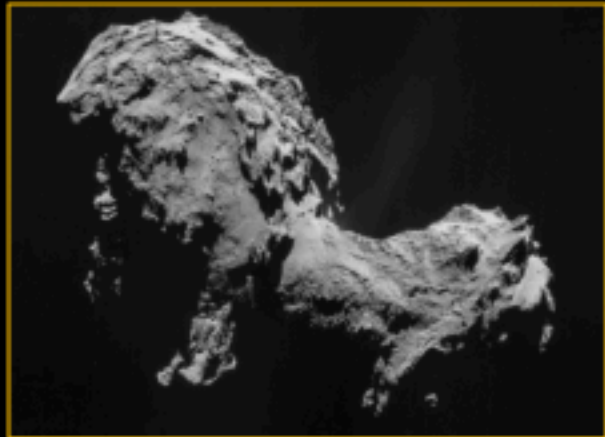


A PhD student in “action” at the Planetarium’s Puffersphere



The **Armagh Planetarium** was established in 1968 as the outreach arm of the Observatory

In 2016, the Observatory and Planetarium were merged under a common management structure to form the **Armagh Observatory and Planetarium**



## A short history of AOP (III)

AOP research spans a variety of topics: Solar and solar system physics; stars and the ISM; and galactic/extragalactic astrophysics.

As the research “arm” of AOP, the Observatory is the longest continuously-operating astronomical research organisation in the UK and Ireland



### Mountain Ranges and Some Places of Interest

- |                                  |                                      |
|----------------------------------|--------------------------------------|
| 1 Blue Stack Mountains           | 21 Silvermine Mountains              |
| 2 Derryveagh Mountains           | 22 Slievefin Mountains               |
| 3 Inishowen Peninsula            | 23 Dingle Peninsula                  |
| 4 Sperrin Mountains              | 24 Slieve Mish Mountains             |
| 5 Antrim Mountains & Glens       | 25 Stacks & Glencaruddy Mountains    |
| 6 Mourne Mountains               | 26 Mullaghareirk Mountains           |
| 7 Cooley Peninsula               | 27 Ballyhous Hills                   |
| 8 The Twelve Pins                | 28 Galty Mountains                   |
| 9 Maunturk Mountains             | 29 Knockmeidown Mountains            |
| 10 Measeira Mountains            | 30 Comeragh Mountains                |
| 11 Sheehy Hills                  | 31 Monawulagh Mountains              |
| 12 Parry Mountains               | 32 Backstairs Mountains              |
| 13 Nephin Beg Range              | 33 Aheragh Peninsula / Ring of Kerry |
| 14 Slieve Donagh or Ox Mountains | 34 Macgillycuddy's Reeks             |
| 15 Derry Mountains               | 35 Binn Peninsula / Cahin Mountains  |
| 16 Iron Mountains                | 36 Shehy Mountains                   |
| 17 The Burren                    | 37 Derrynasaggart Mountains          |
| 18 Slieve Aughty Mountains       | 38 Boggeragh Mountains               |
| 19 Slieve Bloom Mountains        | 39 Nagles Mountains                  |
| 20 Wicklow Mountains             | 40 The Mizen Peninsula               |

# Further afield..

OM Dark Sky Park /  
Beaghmore Stone Circles

Armagh & AOP

Dunsink Obs

Birr Castle

ATLANTIC  
OCEAN



## Travelling to/from Armagh


Armagh is served by 3 airports: Belfast International (BFS), Belfast City (BHD) and Dublin International (DUB)

Transport to Armagh is by bus, taxi or private/rented car

Northern Ireland does have a rail network, however there is no train station in Armagh itself; nearest station is in Portadown







We look forward to  
welcoming you in 2023!



ARMAGH  
OBSERVATORY &  
PLANETARIUM

EXPLORING THE COSMOS SINCE 1790